

SEE 13-11-026

748.30

P4021  
~~019~~  
907A  
8.07 AC

AW

-018  
3.46 A

-020 1.00 AC

P4021  
P4 8.07 AC

346.77  
424.4

-004  
1.29 A

Heringa, Richard M  
-005 Janet  
1.00 A. 3-05-69

MAY 17 1976

SEP 10 1976

-017  
13.35 A

95-95

APPROVED
LORAIN CO.
MAP DEPT.
DATE 5-10-76
PAGE 13-11-027
BY L.W. Hall
VOID AFTER



8-10-81  
L.L. 538.24

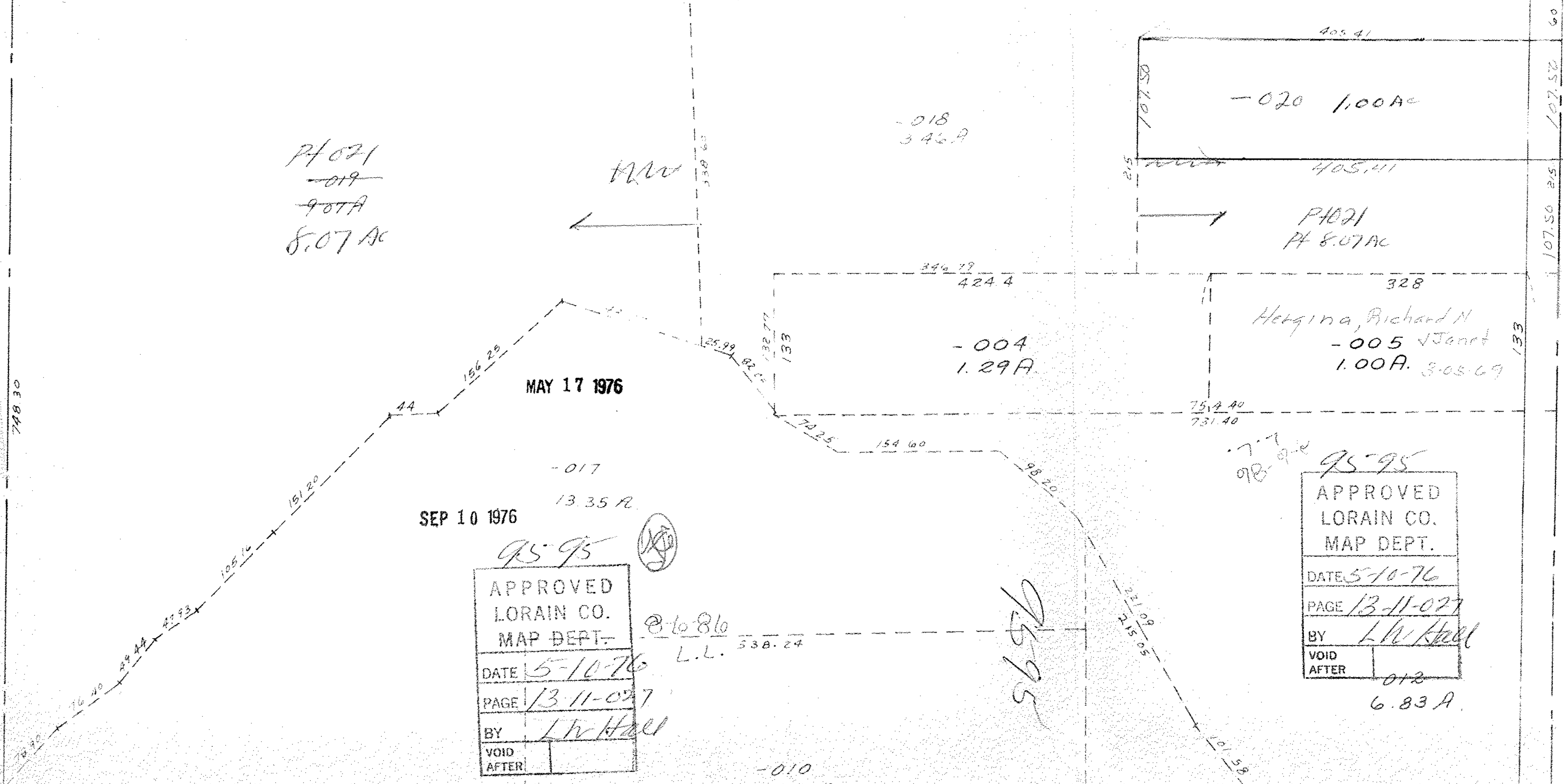
95-95

95-95

APPROVED
LORAIN CO.
MAP DEPT.
DATE 5-10-76
PAGE 13-11-027
BY L.W. Hall
VOID AFTER

6.83 A

-010  
3.50 A



107.50  
107.50  
60