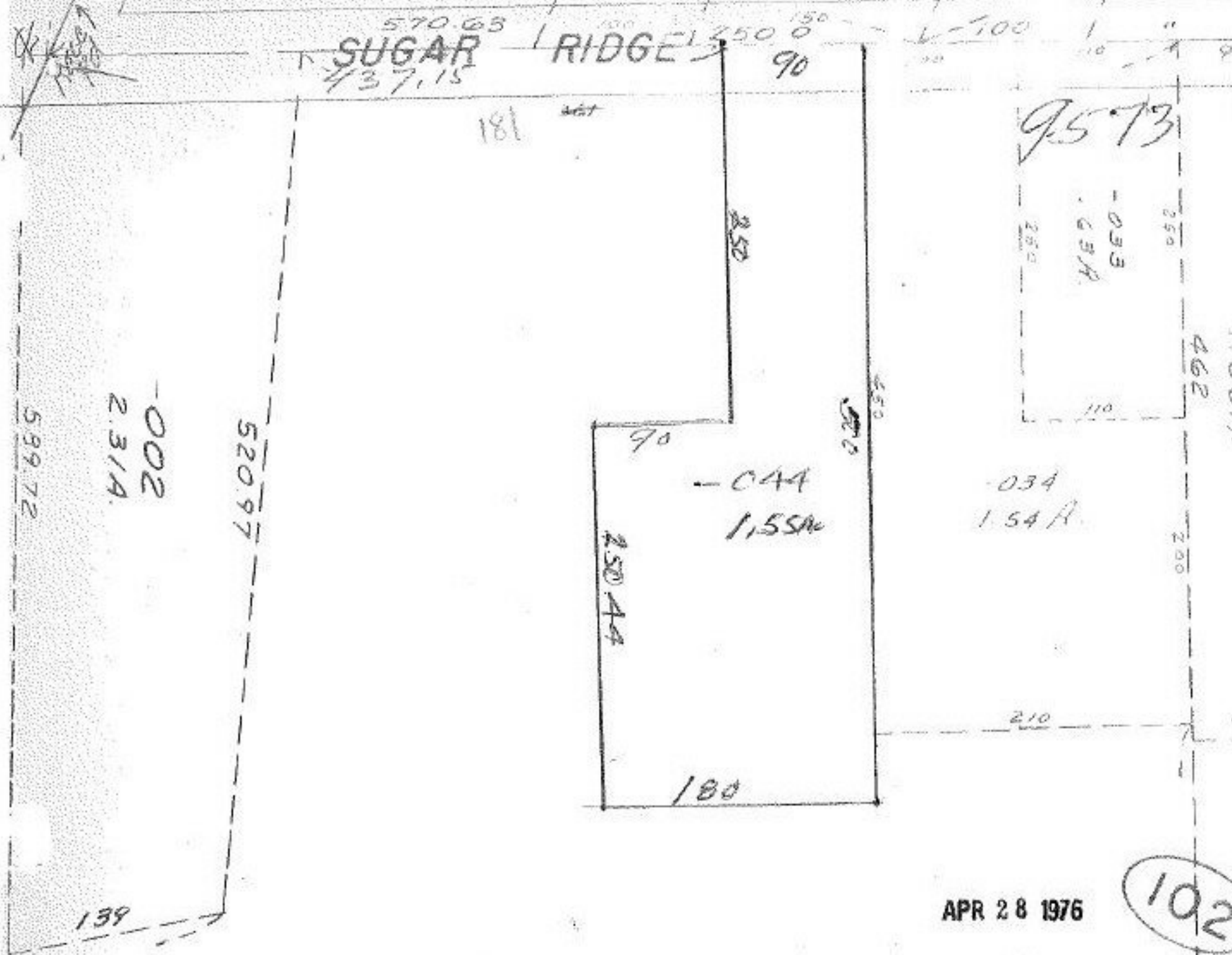


SUGAR RIDGE



APR 28 1976

102

Pt. C415  
Pt. ~~435~~ 44A  
116, 134A

9573

APPROVED
LORAIN CO.
MAP DEPT.
DATE 4-27-74
PAGE 7-00-035A
BY L.W. Hill
VOID AFTER

JAN 18 1977

1870.4