

Pt. - 022 Pt. 1.76A.

943.08

9569

Pt. - 019
Pt. 12.09A.

APR 26 1976

See 5-00-079A

835.90
Pt. - 021 Pt. 1.30A.
844.9

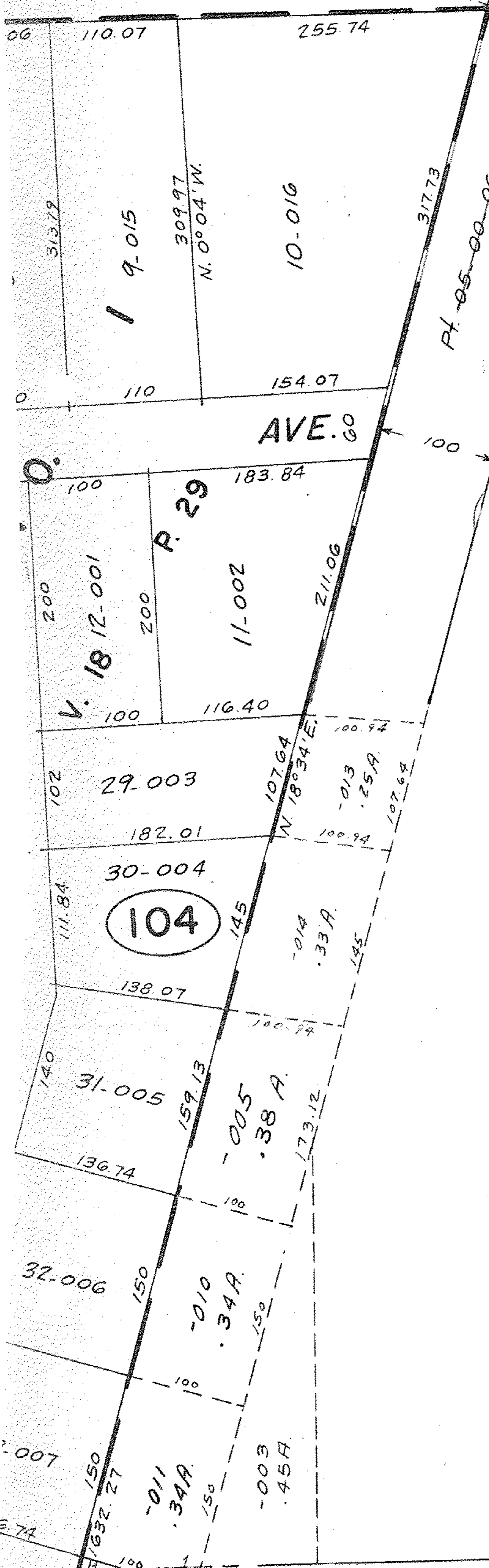
Pt. - 018
Pt. 6.53A.

Pt. - 024
Pt. 24.31A.

05-00-062-105-019
3.73 AC
CONVEYANCE
BY
L.H. HARRIS

- 001
1.64A.

SEE 5-00-079-A



105

- 002
10.42A.

1224.30

9569

APPROVED
LORAIN CO.
MAP DEPT.
DATE 4-23-76
PAGE 5-00-062 B
BY
VOID AFTER

MS
AUG 17 1977