

1275.73  
1266.50  
1261.26

~~044~~ 057  
19.37A 18.63AC

OCT 15 1976



9568

APPROVED  
LORAIN CO.  
MAP DEPT.

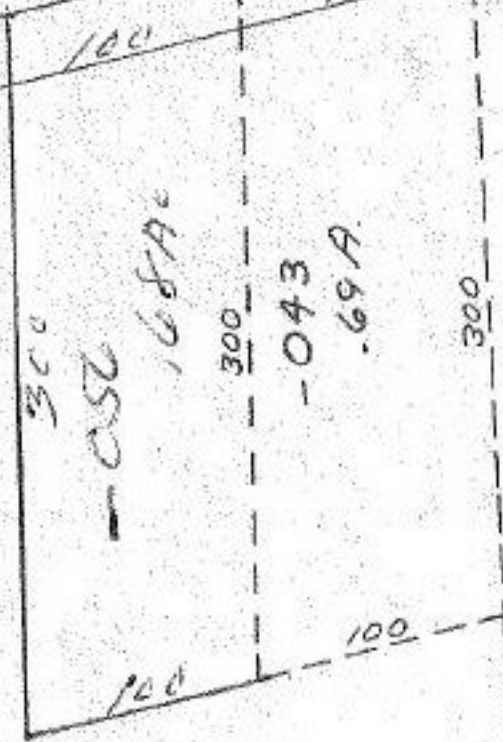
DATE 4-26-76

PAGE 1100-C97A

BY LN Hill

VOID  
AFTER

8.8  
8.8  
1382.9



RD.  
100

9568

APR 29 1976