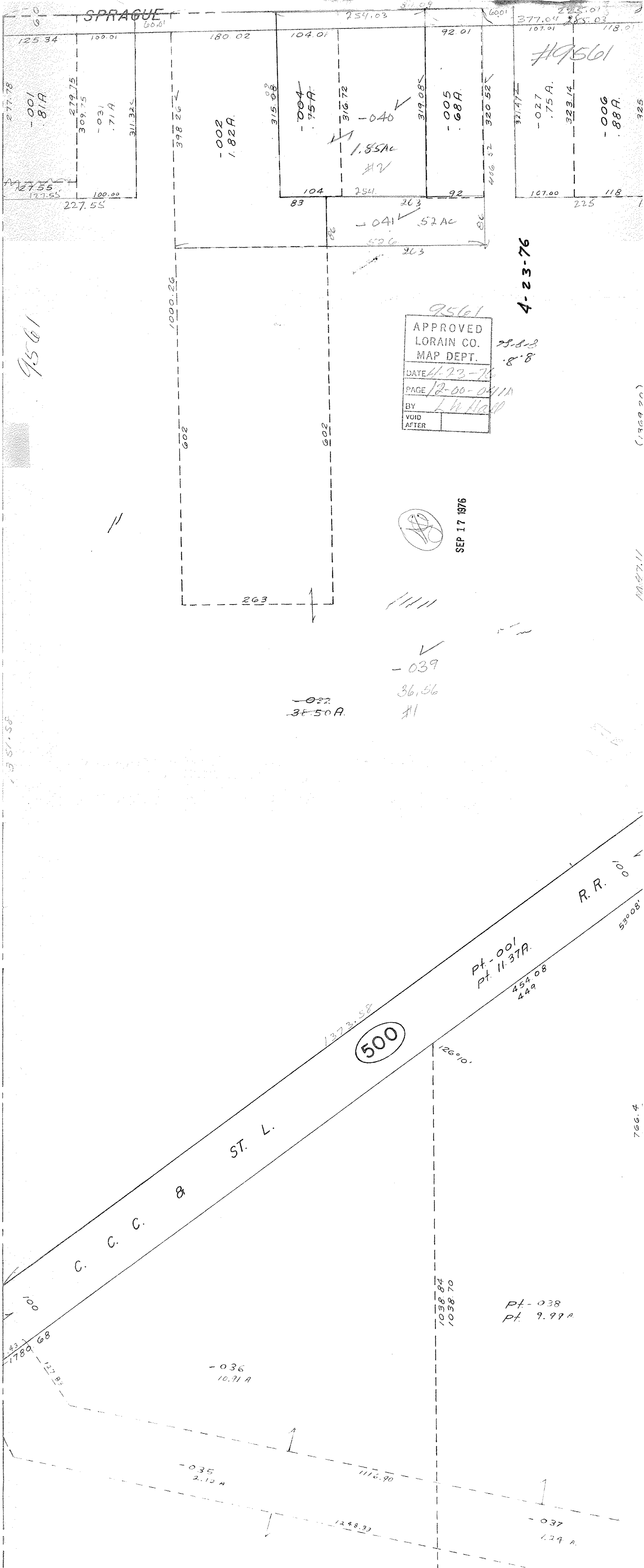


SPRAGUE



9561

#9561

4-23-76

9561
 APPROVED
 LORAIN CO.
 MAP DEPT.
 DATE 4-23-76
 PAGE 12-00-0411A
 BY L W Hall
 VOID AFTER



SEP 17 1976

-039
36.56
#1

-032
38.50 A.

Pt. -001
Pt. 11.37A.
454.08
449

500

Pt. -038
Pt. 9.99A

-036
10.71 A

-035
2.12 A

-037
1.24 A

277.78
125.34
-001
81A
279.75
309.75
-031
.71A
311.325
60.01
180.02
398.26
104.01
315.08
-004
75A
316.72
-040
1.85AC
#2
104
254.
92
319.08
-005
68A
92.01
406.52
320.52
60.01
377.04
225.01
107.01
118.01
107.00
225
118
325

1357.58

(1369 20)

1047.11

766.4