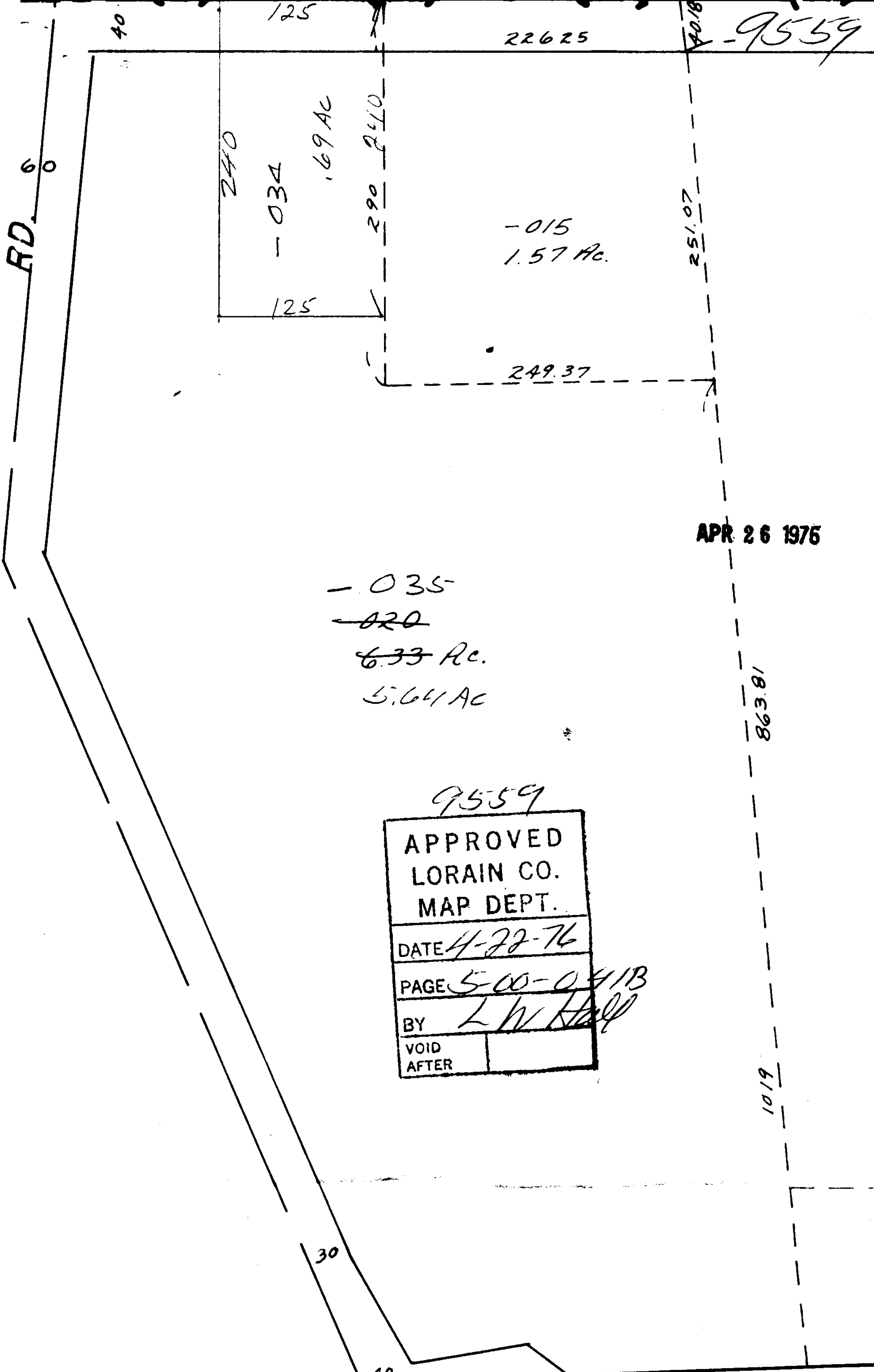


COOPER FOSTER PARK Co.



APR 26 1975

- 035
~~- 020~~
~~6.33 Ac.~~
5.64 Ac

9559

APPROVED	
LORAIN CO.	
MAP DEPT.	
DATE	4-22-76
PAGE	5-00-041B
BY	L W Hall
VOID	
AFTER	