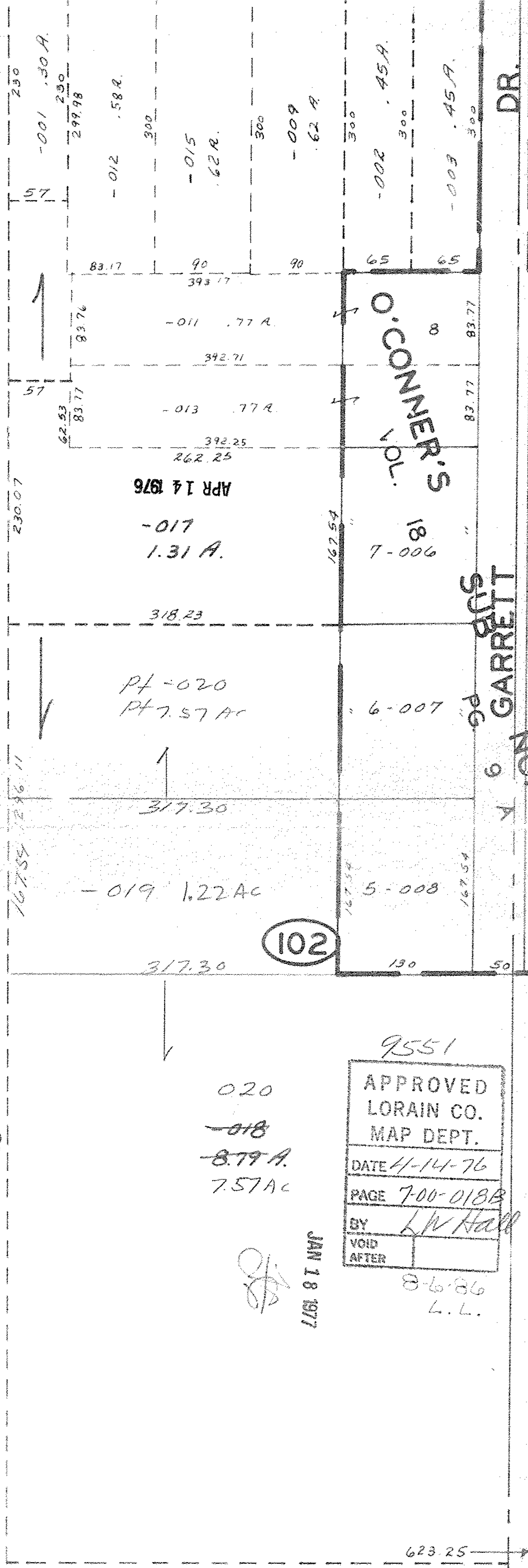


500
-028
2.61A
500
227.50

-029
40.21A

2249.55



9551

APPROVED
LORAIN CO.
MAP DEPT.
DATE 4-14-76
PAGE 7-00-018B
BY L.W. Hall
VOID AFTER

8-6-86
L.L.

020
~~018~~
~~8.79 A.~~
7.57 AC

JAN 18 1977

SEE 7-00-007-A

Y O GARRETT

9551

623.25