

9543

100 100  
-001  
68A  
100 100  
-002  
68A  
300

1072.5

694

1011  
3096A

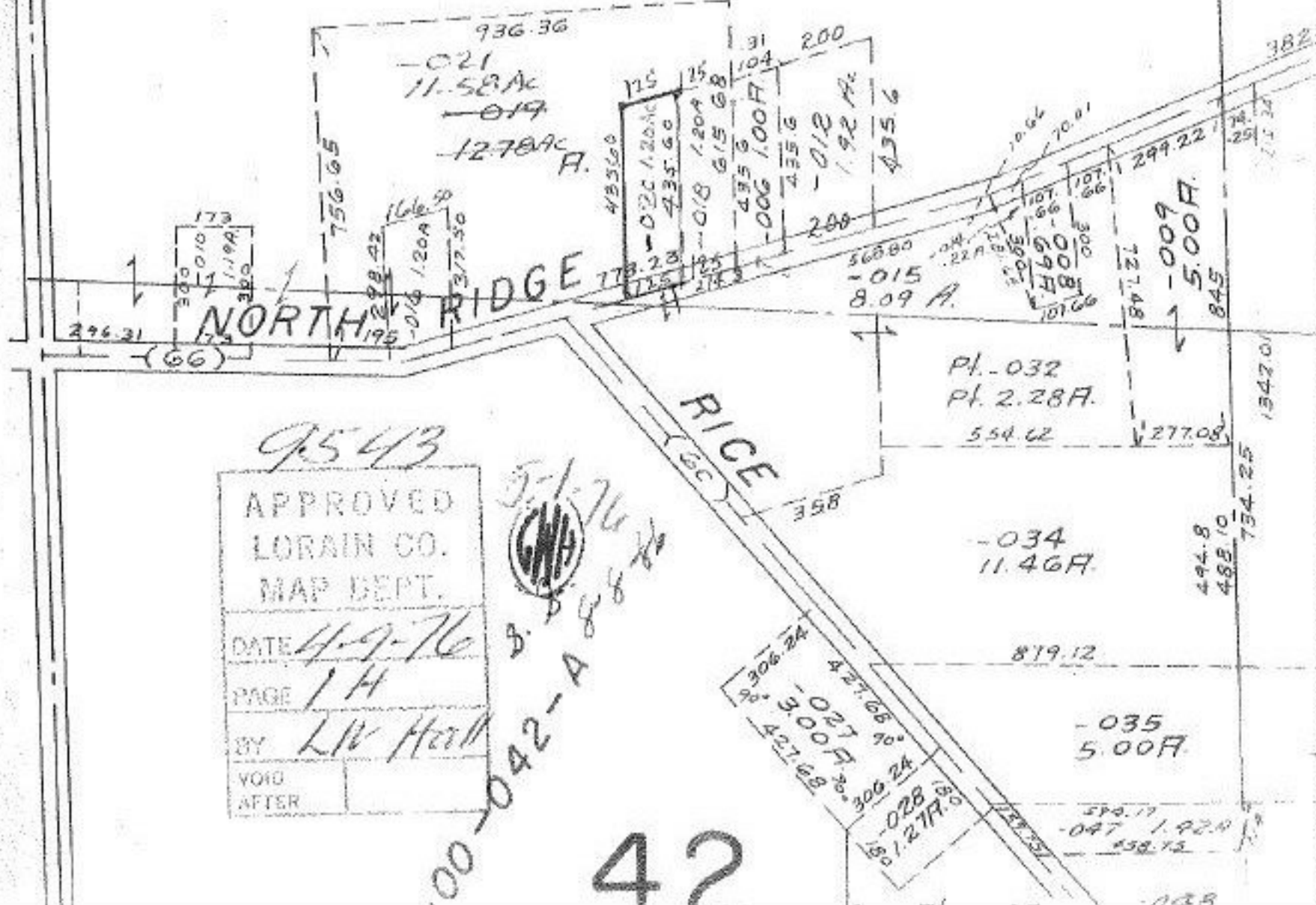
39

10  
61.55A

407.8

APR 9 1976

008  
425



9543  
 APPROVED  
 LORAIN CO.  
 MAP DEPT.  
 DATE 4-9-76  
 PAGE 1H  
 BY L.V. Heath  
 VOID  
 AFTER



00-042-A & B  
 42