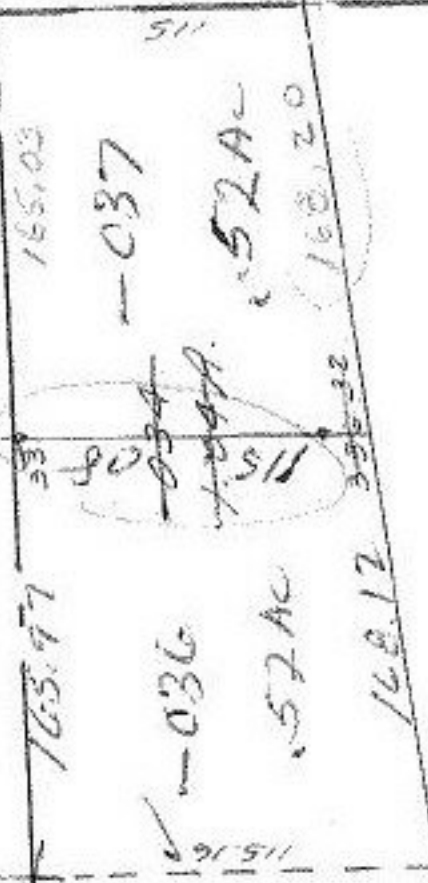


9531

See Also  
5-00-015B

115.16  
163.47

5-00-015-B



-035  
5.80A.

247.64  
Completed on  
Page 5.00-015-B

331.27  
165.03  
165.03

336.22  
168.20  
168.20

9531

APPROVED
LORAIN CO.
MAP DEPT.
DATE 4-6-76
PAGE 5-00-014B
BY L. W. HADY TURNPIKE
VOID AFTER

AUG 16 1977

APR 8 1976

4. -015

37 A.