

APR 2 1976

9508
9509
~~9510~~

APPROVED
LORAIN CO.
MAP DEPT.

DATE 3-26-76

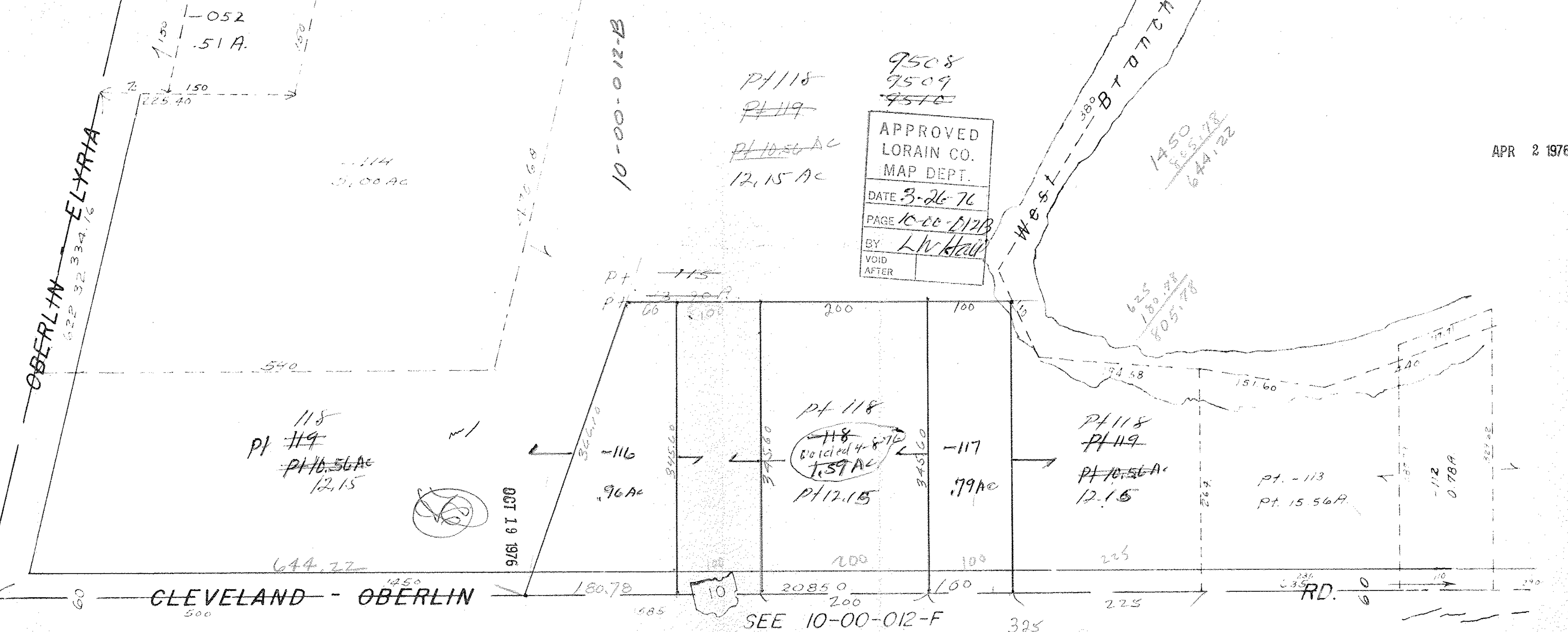
PAGE 10-00-012B

BY L.V. HALL

VOID
AFTER

PT 118
~~PT 119~~
~~PT 10.56 AC~~
12.15 AC

PT 115
3 90 ft



CLEVELAND - OBERLIN



SEE 10-00-012-F

RD.

OCT 19 1976

052
.51 A.

1450
1450
644.22

625
180.78
505.78

118
PT 119
~~PT 10.56 AC~~
12.15

116
9.6 AC

118
Voided 4-8-76
1.59 AC
PT 12.15

117
0.79 AC

PT 118
PT 119
~~PT 10.56 AC~~
12.15

PT. 113
PT. 15.56 AC

112
0.78 AC

150
225.40

OBERLIN ELYRIA
622 32 334.16

10-00-012-B

West Branch

540

644.22

180.78

2085.0

160

225

635

RD.

325

60

500

585

200

100

225

622

20 125

240

114
0.00 AC

170.68

140

151.60

194.58

17.71

150

150

60

100

200

100

15

140

20 125

150

150

60

100

200

100

15

140

20 125

150

150

60

100

200

100

15

140

20 125

150

150

60

100

200

100

15

140

20 125

150

150

60

100

200

100

15

140

20 125

150

150

60

100

200

100

15

140

20 125

150

150

60

100

200

100

15

140

20 125

150

150

60

100

200

100

15

140

20 125

150

150

60

100

200

100

15

140

20 125

150

150

60

100

200

100

15

140

20 125

150

150

60

100

200

100

15

140

20 125

150

150

60

100

200

100

15

140

20 125

150

150

60

100

200

100

15

140

20 125

150

150

60

100

200

100

15

140

20 125

150

150

60

100

200

100

15

140

20 125

150

150

60

100

200

100

15

140

20 125

150

150

60

100

200

100

15

140

20 125

150

150

60

100

200

100

15

140

20 125

150

150

60

100

200

100

15

140

20 125

150

150

60

100

200

100

15

140

20 125

150

150

60

100

200

100

15

140

20 125

150

150

60

100

200

100

15

140

20 125

150

150

60

100

200

100

15

140

20 125

150

150

60

100

200

100

15

140

20 125

150

150

60

100

200

100

15

140

20 125

150

150

60

100

200

100

15

140

20 125

150

150

60

100

200

100

15

140

20 125

150

150

60

100

200

100

15

140

20 125

150

150

60

100

200

100

15

140

20 125

150

150

60

100

200

100

15

140