

9502

APR 7 1976

9502

5-1-76

9502

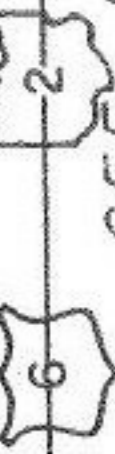
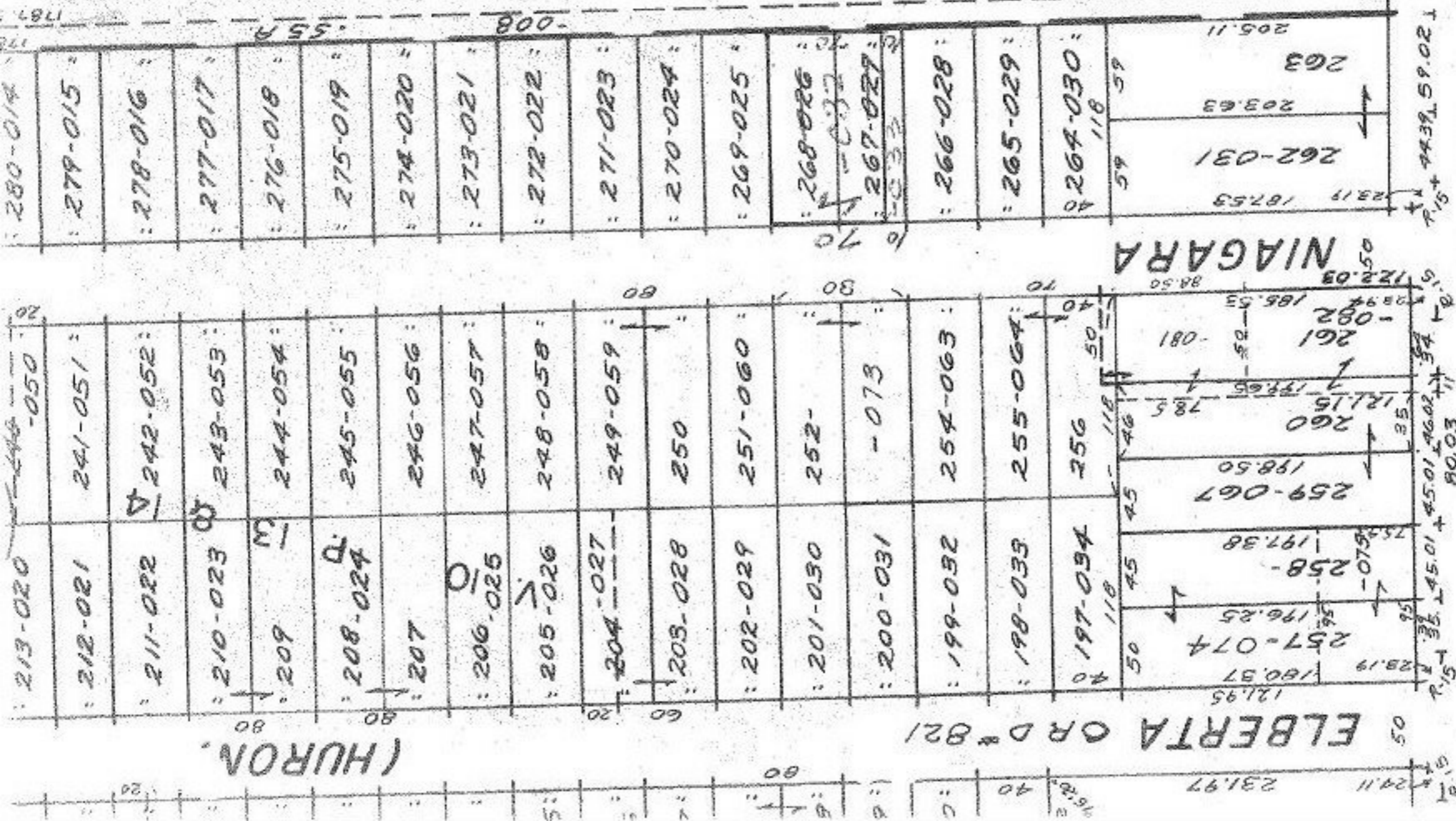
APPROVED
LORAIN CO.
MAP DEPT.

DATE 3-25-76

PAGE 1-00-001B

BY L.W. HALL

VOID
AFTER



SANDUSKY (LAKE)

SEE 1-00-001

20 WNW HELM TWP.

1" = 100'