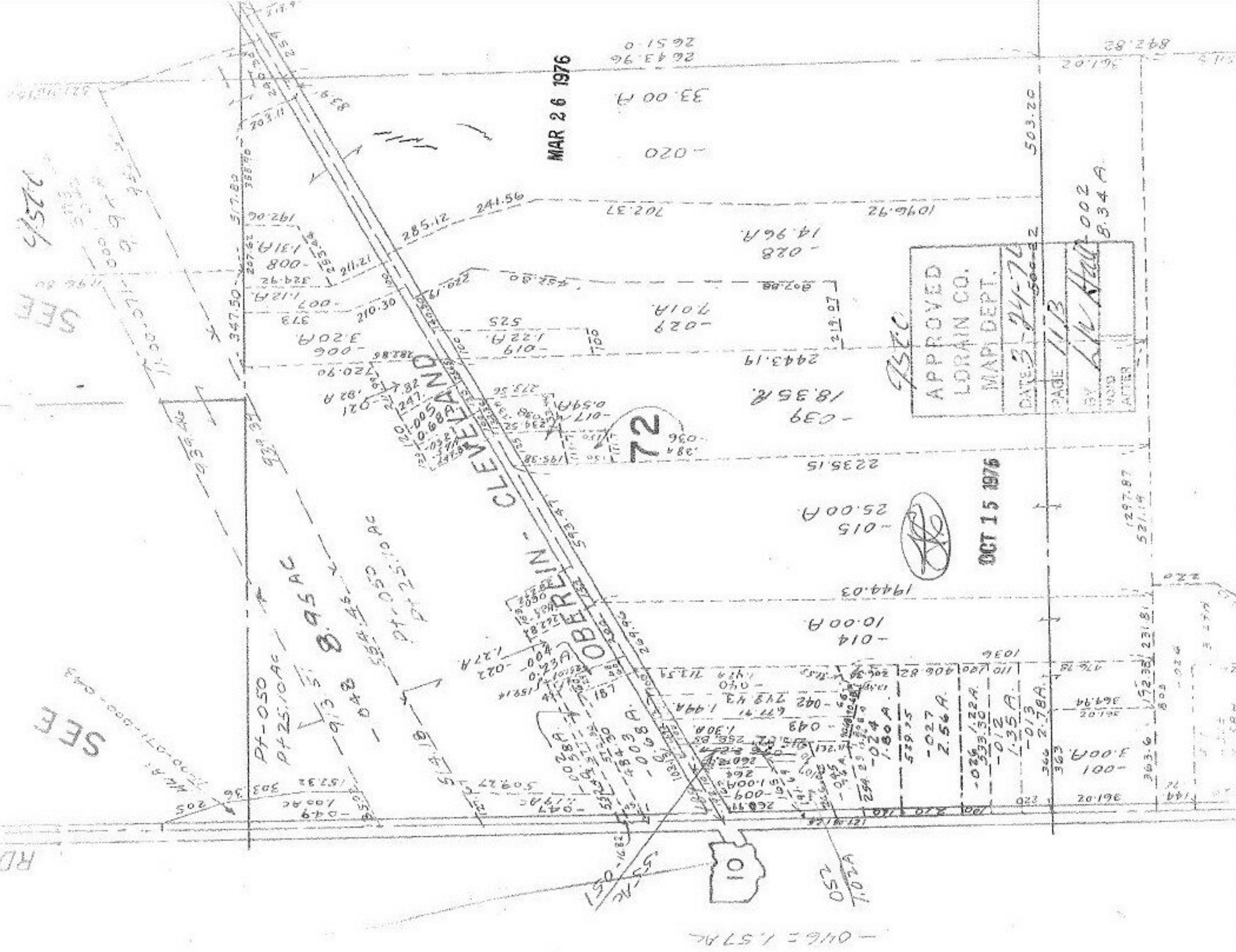


RD

SEF

2/25/76
3/2/76
3/2/76
3/2/76



MAR 26 1976

2643.96
2651.0

842.82

33.00 A

-020

503.20

702.37

14.96 A

1046.92

P.S.T.C.

APPROVED
LORAIN CO.
MAP DEPT.

DATE 3-24-76

PAGE 111B

BY L.W. Hall 002
8.34 A

VOID
AFTER

72

OCT 15 1976

2235.15

-015

25.00 A

1944.03

10.00 A

-014

1036

-013

1.35 A

-025/22A

333.50

-027

2.56 A

529.25

1.80 A

-024

254.25

260.71

1.00 A

260.71

1.00 A

260.71

1.00 A

260.71

1.00 A

260.71

1.00 A

260.71

1.00 A

260.71

1.00 A

260.71

1.00 A

260.71

1.00 A

260.71

1.00 A

260.71

1.00 A

260.71

1.00 A

1297.87

521.14

192.38

231.81

803

-026

2.58 A

2.58 A

2.58 A

2.58 A

2.58 A

2.58 A

2.58 A

2.58 A

2.58 A

0 1/4 = 1.57 AC

052
1.02 A



53 AC
051

PT-050

PT-25.10 AC

PT-050

PT-25.10 AC

PT-050

PT-25.10 AC

PT-050

PT-25.10 AC

PT-050

PT-25.10 AC

PT-050

PT-25.10 AC

PT-050

PT-25.10 AC

PT-050

PT-25.10 AC

PT-050

PT-25.10 AC

PT-050

PT-25.10 AC

PT-050

PT-25.10 AC

PT-050

PT-25.10 AC

PT-050

PT-25.10 AC

PT-050

PT-25.10 AC