

652.20

234.30

60

18-C

18-00-016-B

R.D.

~~2.44~~  
2.82A.

AUG 27 1975



# 9489

APPROVED  
LORAIN CO.  
MAP DEPT.

DATE 3-22-76

PAGE 18-00-016B

BY *J. G. ...*

VOID  
AFTER

-041  
14.31A.

MAR 22 1976

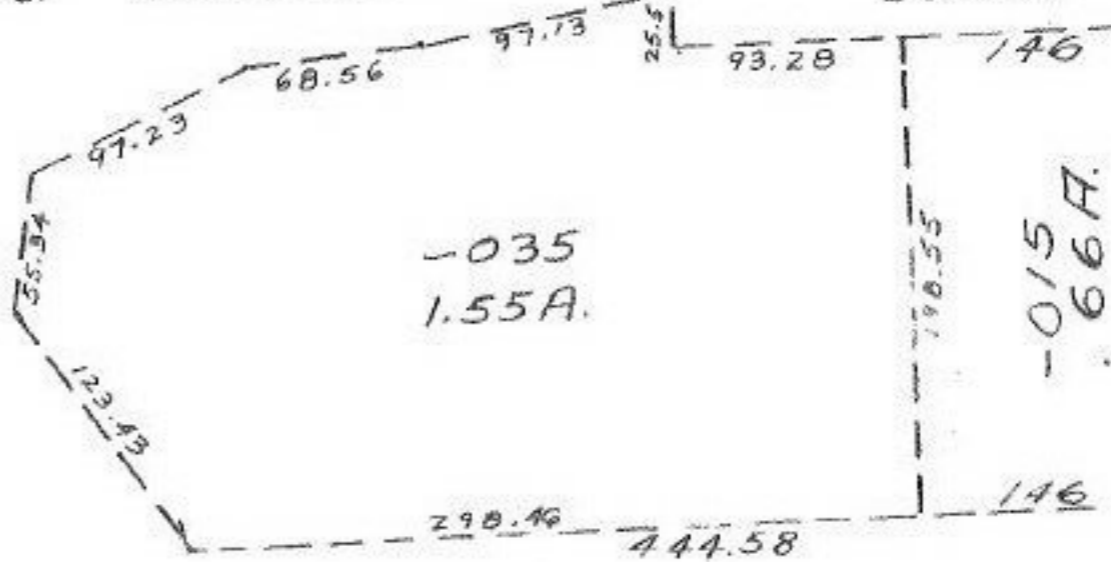
999.20  
524.70

-013  
~~3.00A.~~  
2.82A.

524.70

3.00

234.30



-035  
1.55A.

-015  
66A.

198.58

25.5

93.28

146

146

298.46

444.58

97.23

68.56

97.73

46.55

123.43