

9487

16-A

2642.64

-001  
31.00A.

2652.87

507.7

88°3A'

7.55

52A.

300

200

290

418.57

-014  
734R

765.67

18.57

608.80

-014

-016

-018

-04-03A

57.52A

97.17A

39

MAR 22 1976

9487

APPROVED.  
LORAIN CO.  
MAP DEPT.

DATE 3-22-76

PAGE 16-A

BY *H. Eckert*

VOID  
AFTER

SEP 10 1976



-003  
19.94A.

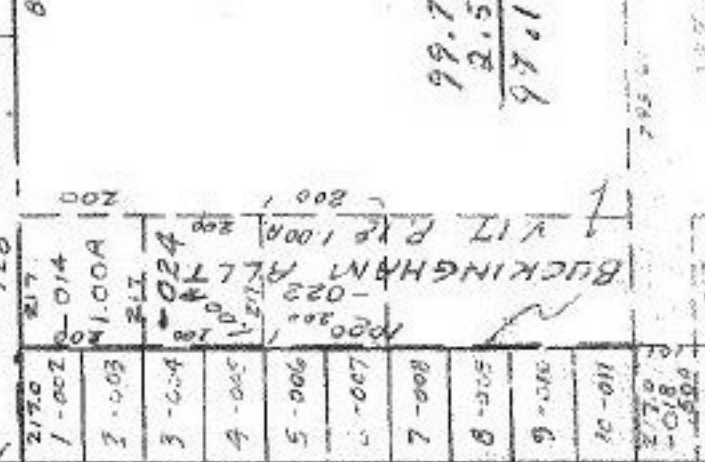
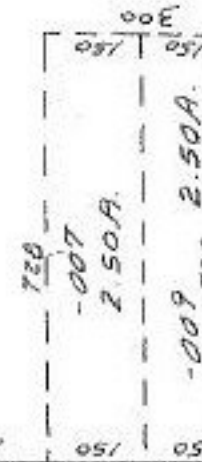
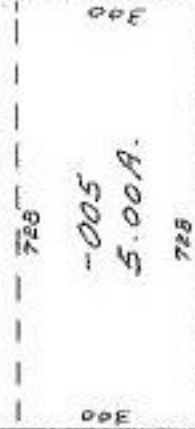
1206.70

1329.9

-025  
22.48A.

99.72  
2.55  
97.17

-013  
41.00A.



510  
811.05

562

028

027

017

018

019