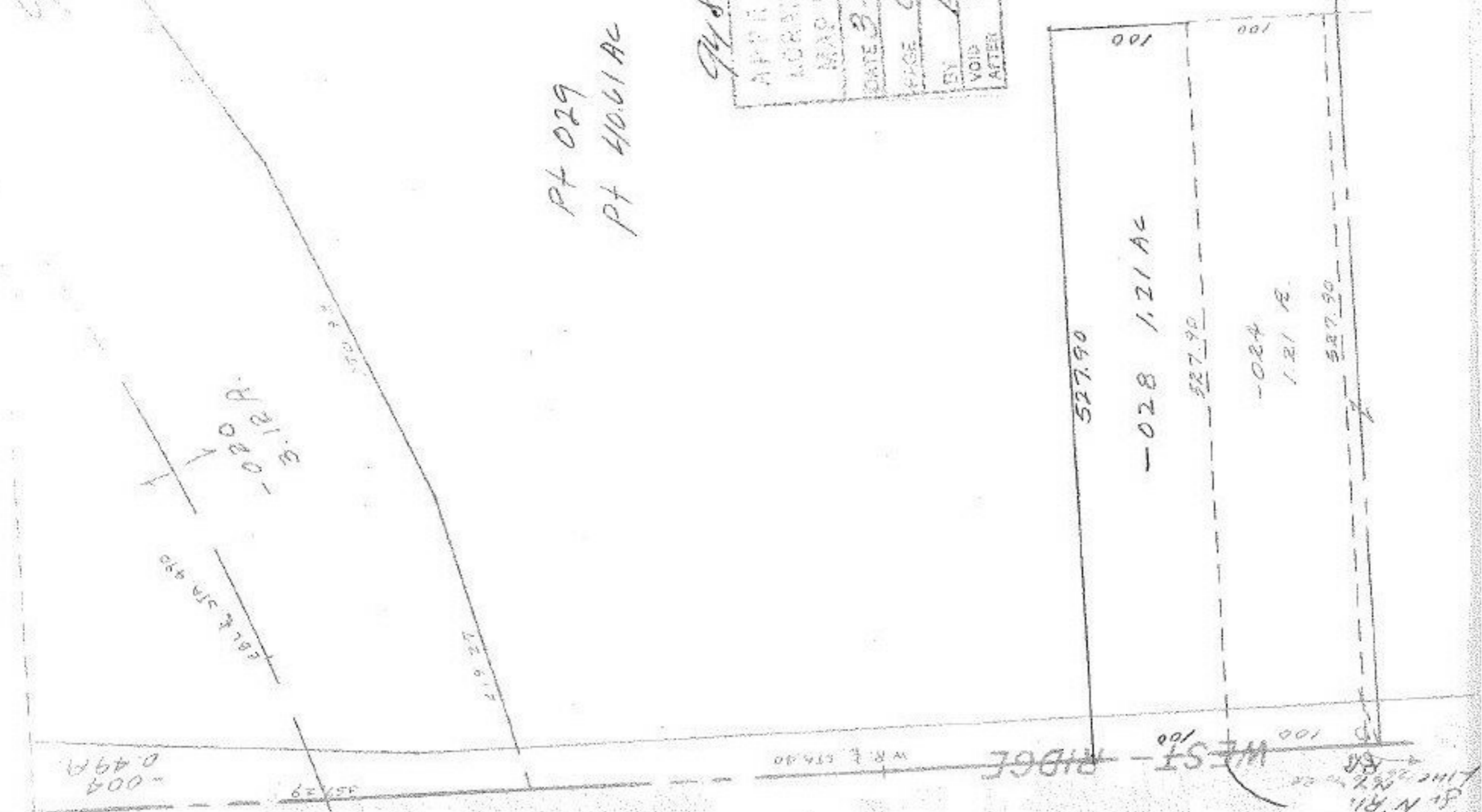


4902



MAR 19 1976

PT 029
PT 410.61 AC

PT ~~029~~
PT ~~410.61 AC~~

See 6-56
A150A

9482

APPROVED
MORAN CO.
MAP DEPT.
DATE 3-15-76
FIG. 6-55
BY L. W. HALL
VOID AFTER

4-26-76

SEE 6-7

WEST RIDGE
100
1.30 R.
1.30 R.
1.30 R.
1.30 R.