

94/34

MERRIAM

(60)

208' 8 1/2"
-002
1.00F.

89' 1/2"

1072.03

148

~~905~~
96.88.A.

007
88.96Ac

94/34

APPROVED
LORAIN CO.
MAP DEPT.

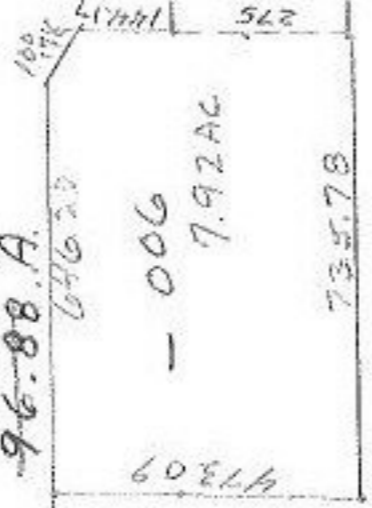
DATE 2-18-76

PAGE 111E

BY L.V. Hall

VOID AFTER -005
27.11A.

978-9-8



FEB 23 1976

SEP 10 1976

282.25
-002
1.01F.
174.92
185.74



144.17
275
A-15.17

-003
10.00F.

-004
25.00F.

153

-002
70.50F.

PITTS

