

94132

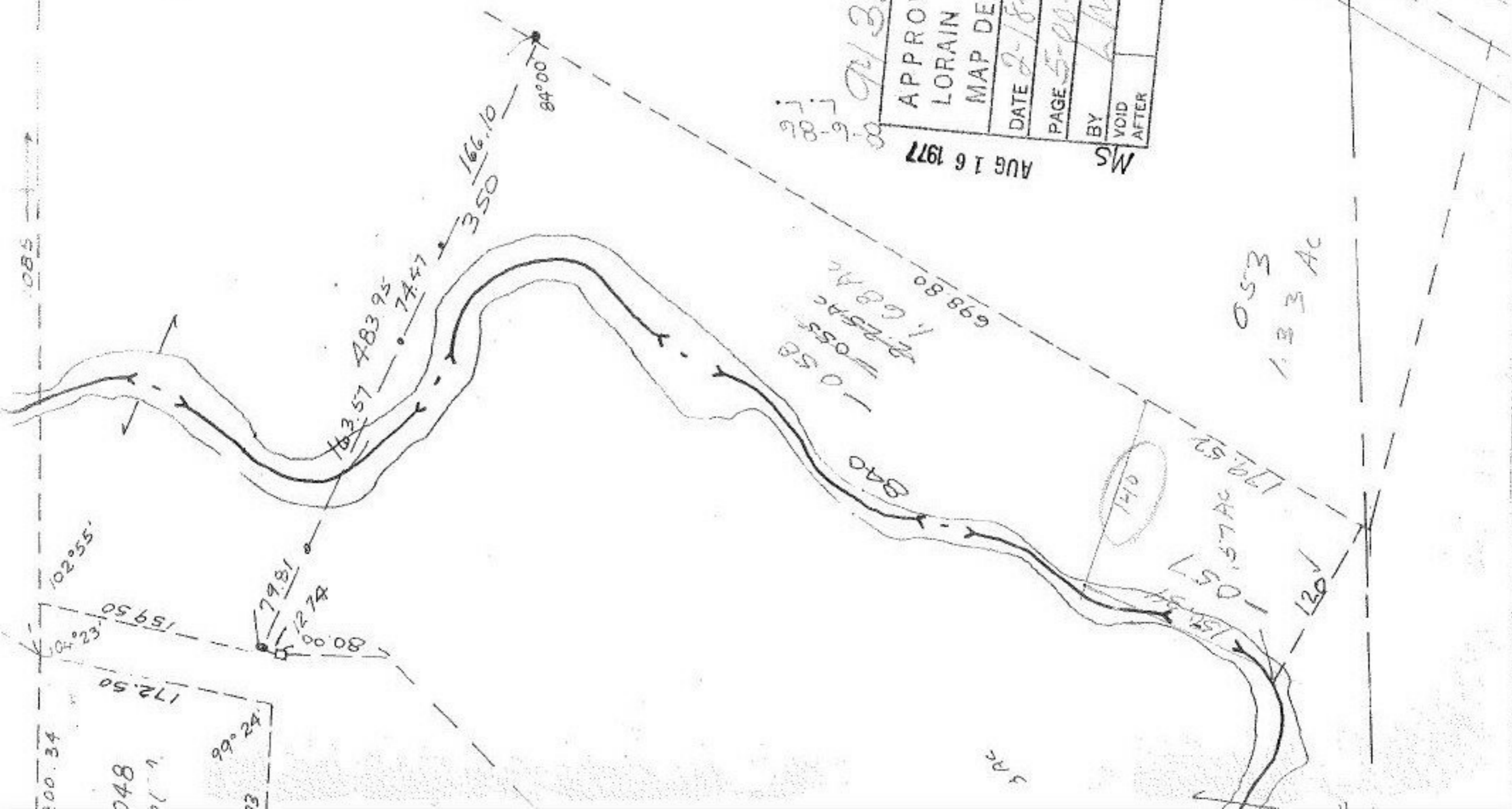
FEB 19 1976

APPROVED LORAIN CO. MAP DEPT.	
DATE	2-18-76
PAGE	5-00-016A
BY	L.W. [unclear]
VOID AFTER	

AUG 16 1977

MS

94132



0.53
1.33 AC

5 AC

100.34
172.50
159.50
102°55'
62°40'
99°24'