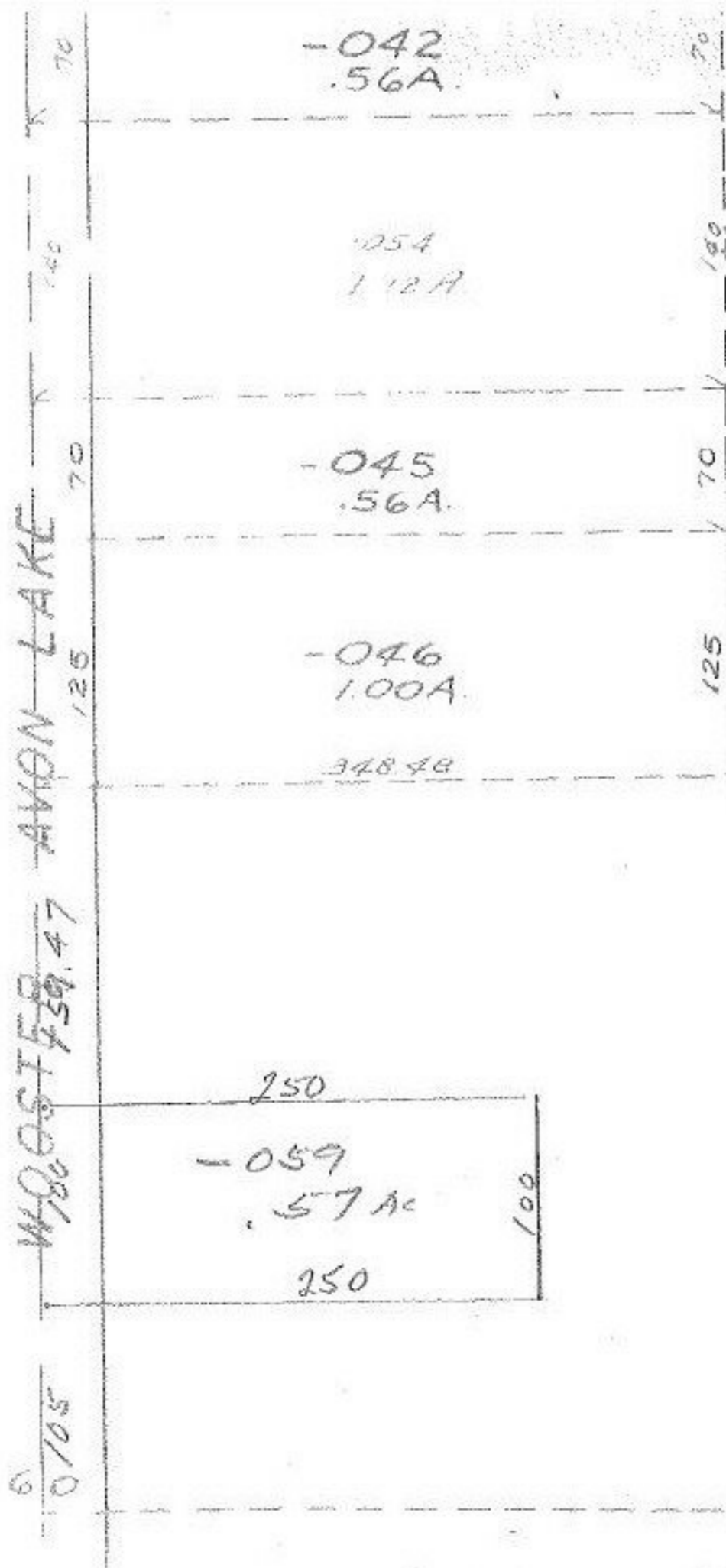


9423



Pt 45.30A

9423

| | |
|------------|-----------|
| APPROVED | |
| LORAIN CO. | |
| MAP DEPT. | |
| DATE | 2-11-76 |
| PAGE | 4-00-017C |
| BY | LW/K |
| VOID | |
| AFTER | |



2500
 - .57

 2443

P/060 Pt. 047
 P/2443 Ac Pt. 2500A

SEE 4-00-017-G