

9416

7986

91°17'

2636

981.88

90°59'

1050 D.
1654 SUR

PT -009 PT 14.64

~~1000~~

2600A.

-008

1650

11.36 AC

PT-009 1050 VOT 14.64 A.

PT 012 PT 14.06

1650

-011 ~~1000~~

5.97

-010

1650

5.97

PT-012 PT 14.64 A.

-003 5.00A. 13

-004 7.50A.

1650

1654.62

18400'

686.40

1057.60
900
300

686.40

1576 1576

198 132

90°

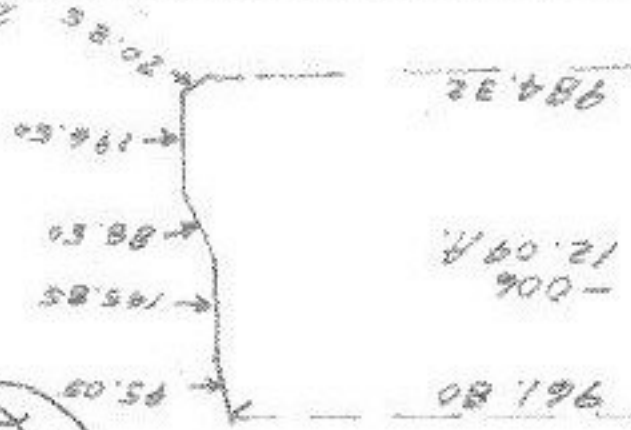
9416

APPROVED
LORAIN CO.
MAP DEPT.
DATE 2-10-76
PAGE 12/14
BY L. W. Hall
VOID AFTER

SEP 17 1976



S. 3-8-86



-007
96.67A.

2639.01

EMMONS

(60)

FEB 11 1976

-001

100.00