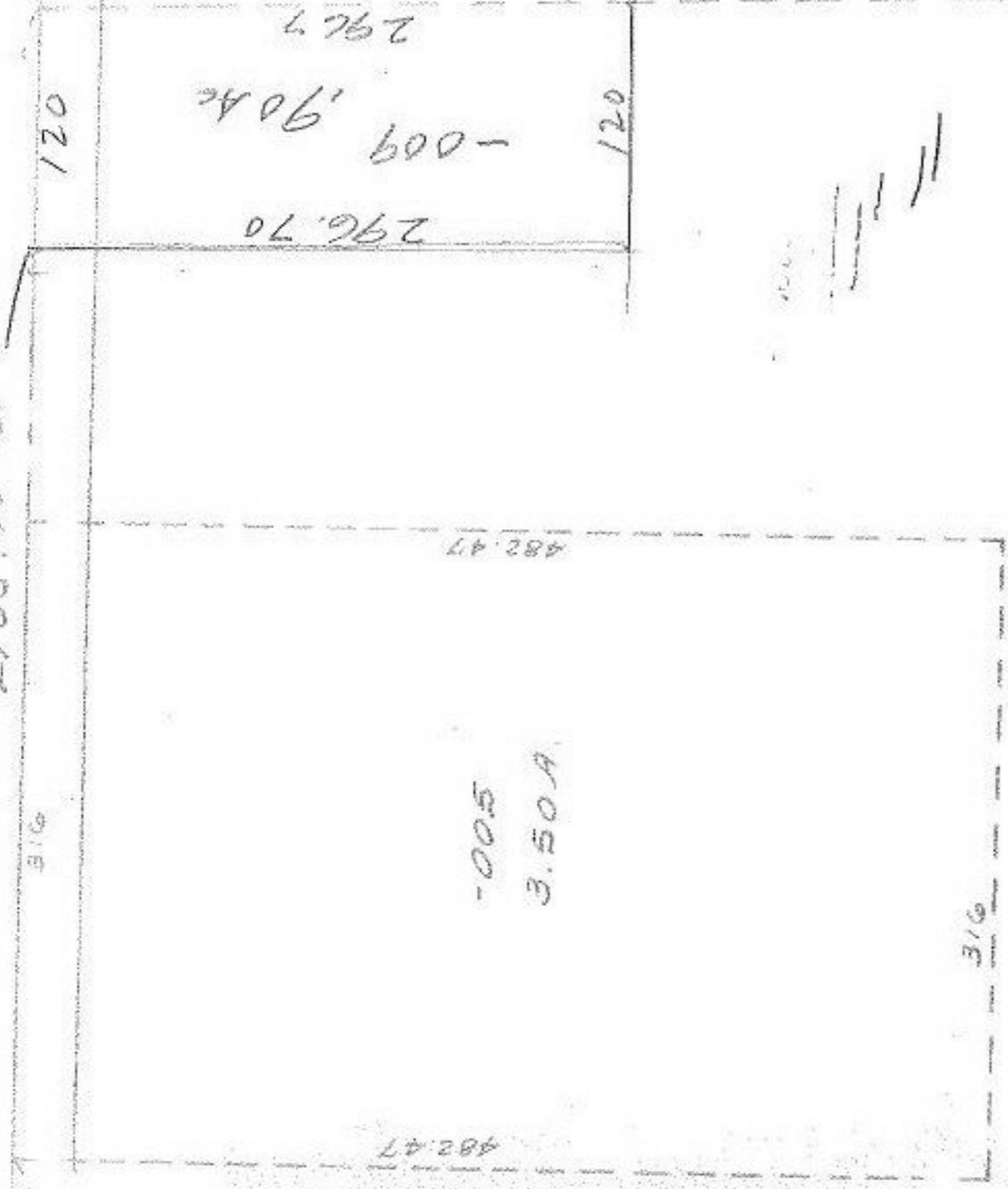


SEE 11-00-013-B

St. E. Regd.
2105.70 RD.

941141



FEB 11 1976

OCT 15 1976

O/I O
47.29 Ac

Pt. -006
Pt. 98-79A

941141

APPROVED
LORAIN CO.
MAP DEPT.
DATE 2-4-76
PAGE 11-00-0141B
BY L. W. HALL
VOID AFTER

008
9.36A

1436.82
1435.50

9.4.9 '86