

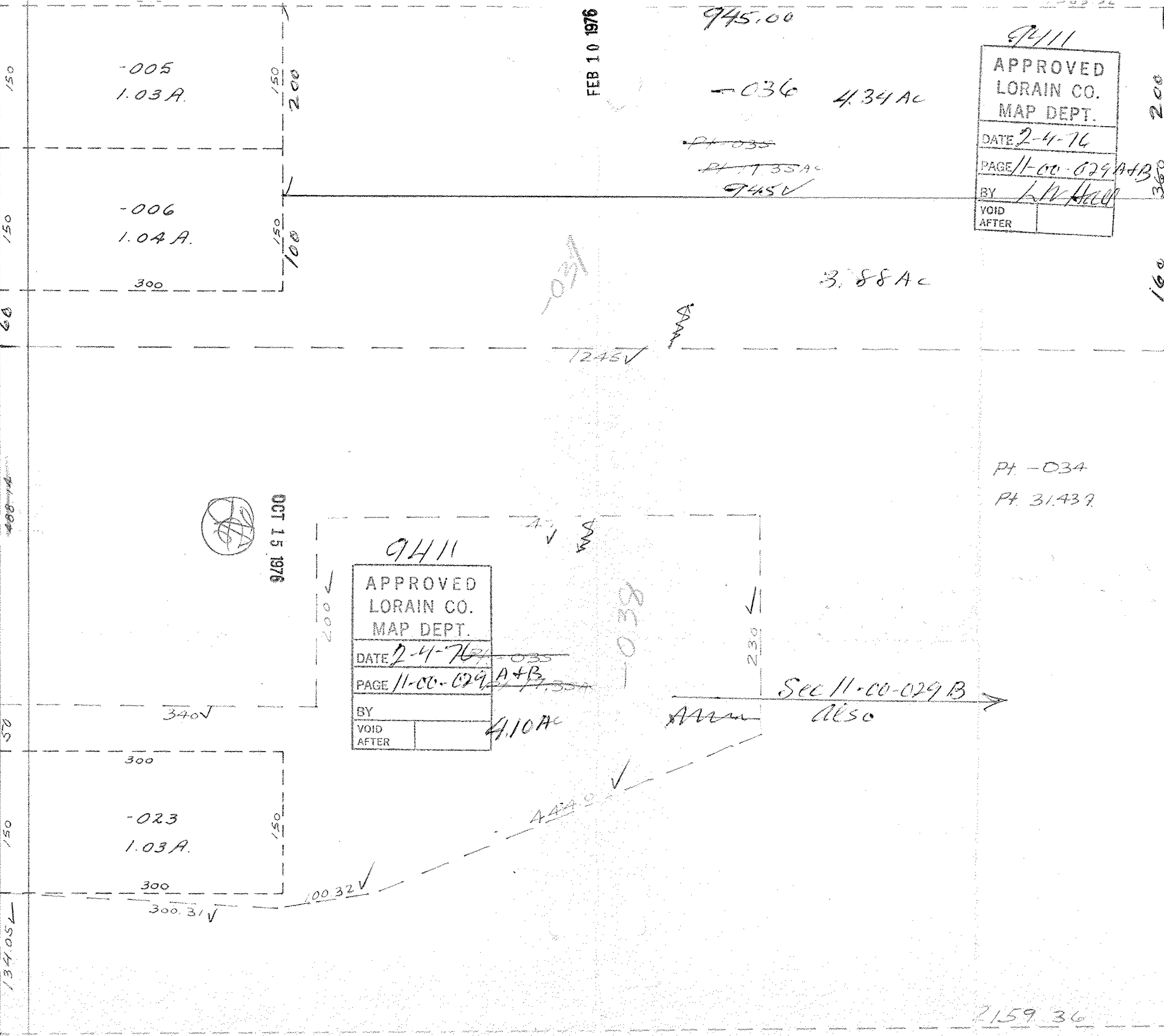
2013.99
Jr. 40' Rd

941.80
40' Rd

378.14
40' Rd

SEE 11-C

2013.87
134.05
750.48
18 E 10'



FEB 10 1976

945.00

9411
 APPROVED
 LORAIN CO.
 MAP DEPT.
 DATE 2-4-76
 PAGE 11-00-029 A+B
 BY L.V. HILL
 VOID AFTER

604.57

OCT 15 1976

9411
 APPROVED
 LORAIN CO.
 MAP DEPT.
 DATE 2-4-76
 PAGE 11-00-029 A+B
 BY
 VOID AFTER

Sec 11-00-029 B
Also

SEE 11-00-029-B

2159.36