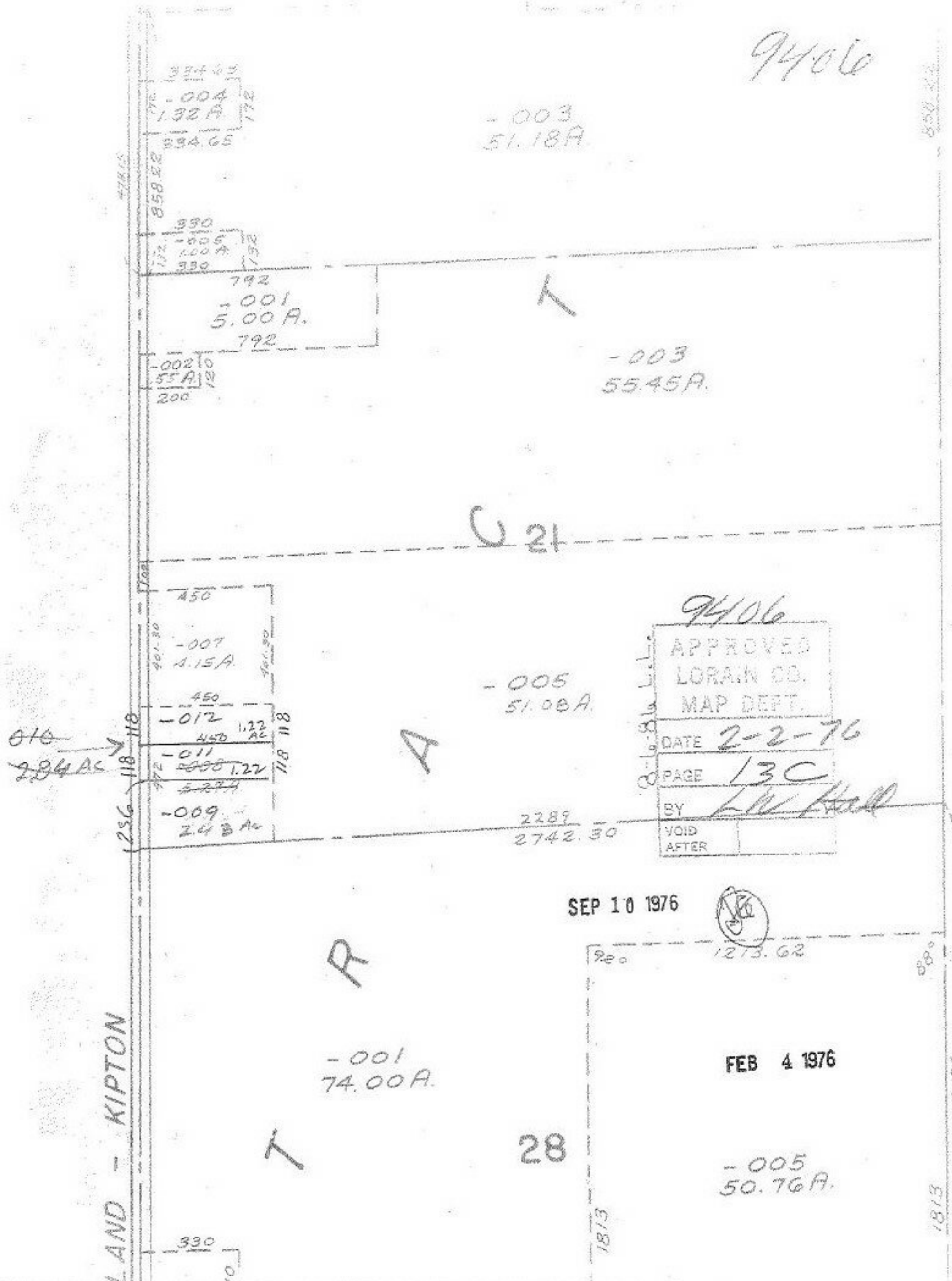


9406



1374.65
-004
132A
172
858.22
854.65

-003
51.18A

850
-805
1000A
330
172
172

792
-001
5.00A
792

T

-002
55A
200

-003
55.45A

U 21

450
-007
1.15A
401.30
401.30

-005
51.08A

9406

APPROVED
LORAIN CO.
MAP DEPT.

DATE 2-2-76

PAGE 13C

BY L.W. Hall

VOID
AFTER

010
2.84 AC

450
-012
450
1.22 AC
118 118
-011
1.22
527.4
-009
2.43 AC
256 118 118

A

2289
2742.30

SEP 10 1976



R

-001
74.00A

FEB 4 1976

T

28

-005
50.76A

LAND - KIPTON

330
10

1813

1813

2224.86

858.22

880