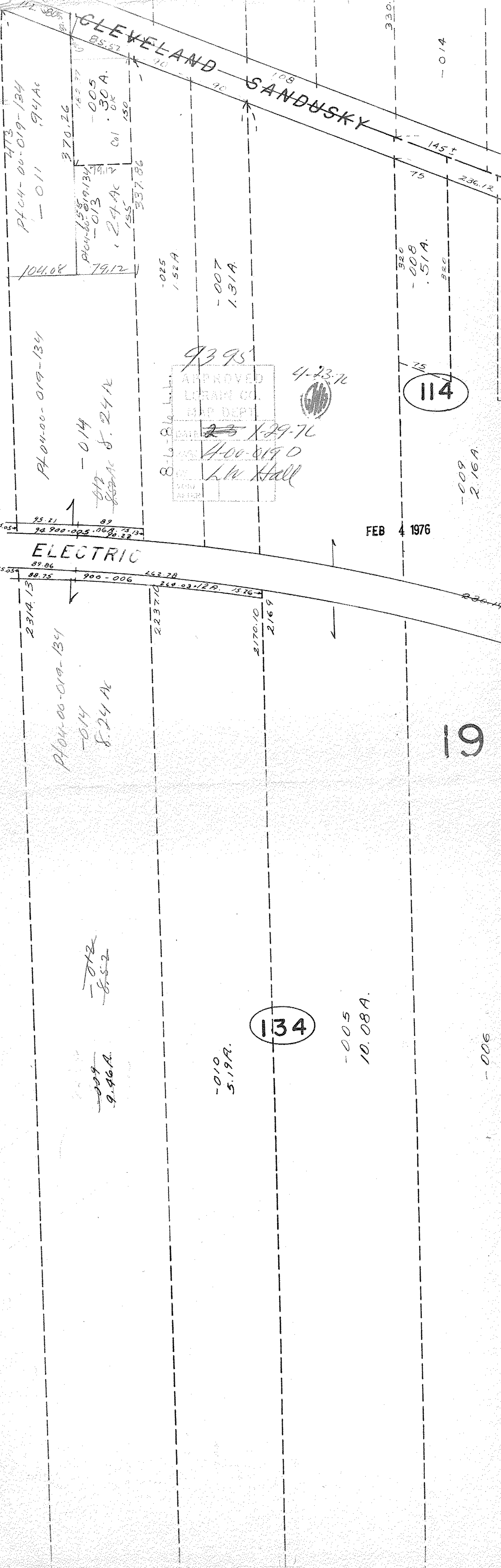


DV 852 - 19 360

SEE 4-00-019-C



473
 P104-00-019-134
 -011 941Ac

104.08
 79.12
 P104-00-019-134
 -014
 812
 822Ac 8.24Ac

95.21
 89
 94 900-005 06A 1313
 90.22

2314.13
 P104-00-019-134
 -014
 8.24 Ac

89.86
 88.75
 900-006
 262.78

2237.10
 2170.10
 2169

218
 852
 9.46A

218
 5.19A

370.26
 182.37
 -005
 30A
 Cal 0K
 150

155
 337.86

269.03 12A 15.76

210.59

210.59

210.59

210.59

210.59

108
 90
 90

-025
 1.52A
 -007
 1.31A

9395
 APPROVED
 LIRAIN CO.
 MAP DEPT
 4-23-76
 4-00-019 D
 L.W. Hall

320
 -008
 51A
 320

114

134

-005
 10.08A

145±
 75
 236.12

330.2
 -014

236.12

236.12

236.12

236.12

236.12

108
 90
 90

320
 -008
 51A
 320

114

134

-005
 10.08A

236.12

236.12

145±
 75
 236.12

330.2
 -014

236.12

236.12

236.12

236.12

236.12

108
 90
 90

320
 -008
 51A
 320

114

134

-005
 10.08A

236.12

236.12

145±
 75
 236.12

330.2
 -014

236.12

236.12

236.12

236.12

236.12

108
 90
 90

320
 -008
 51A
 320

114

134

-005
 10.08A

236.12

236.12

236.12