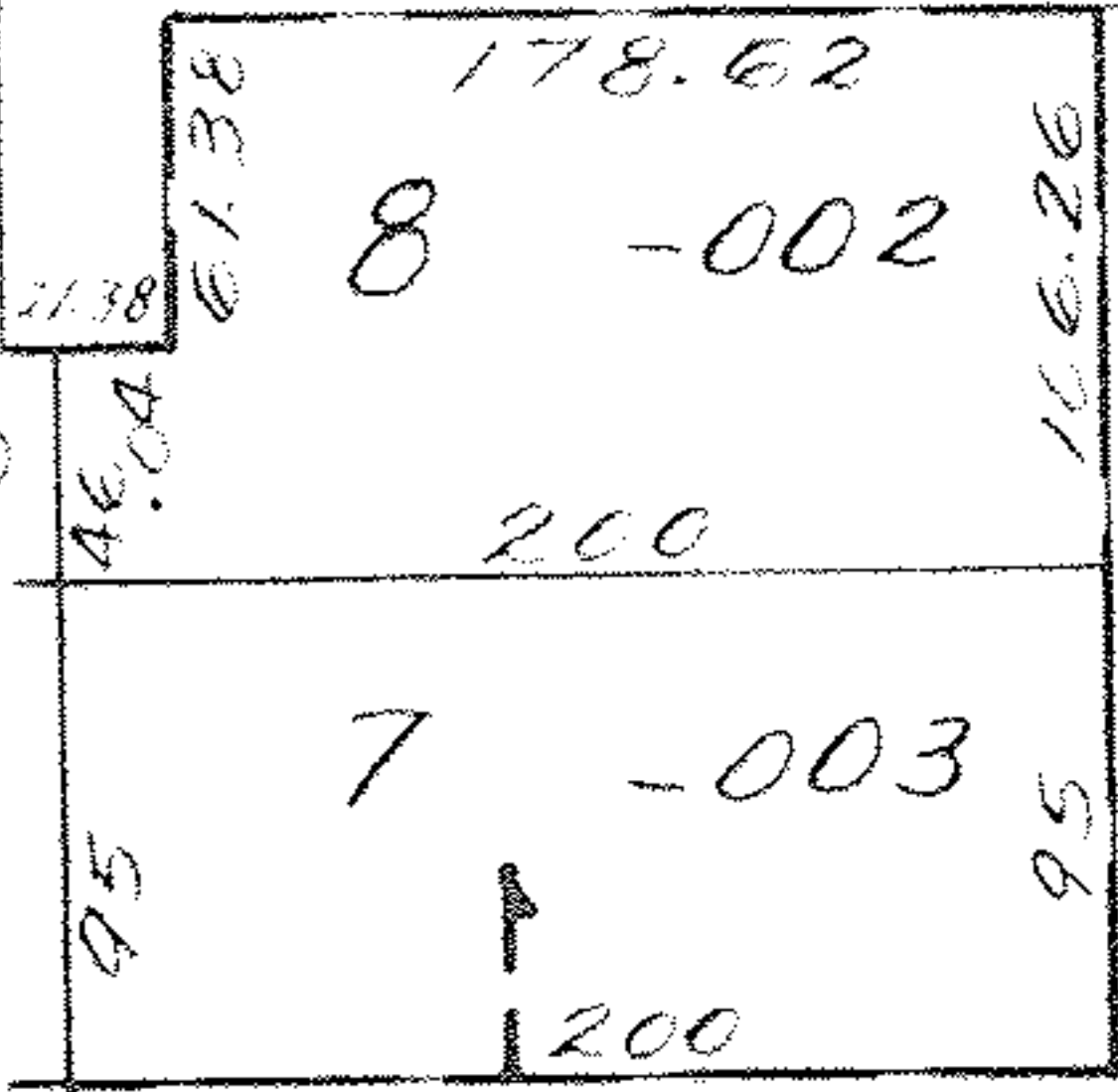


9346

N 89° 24' W

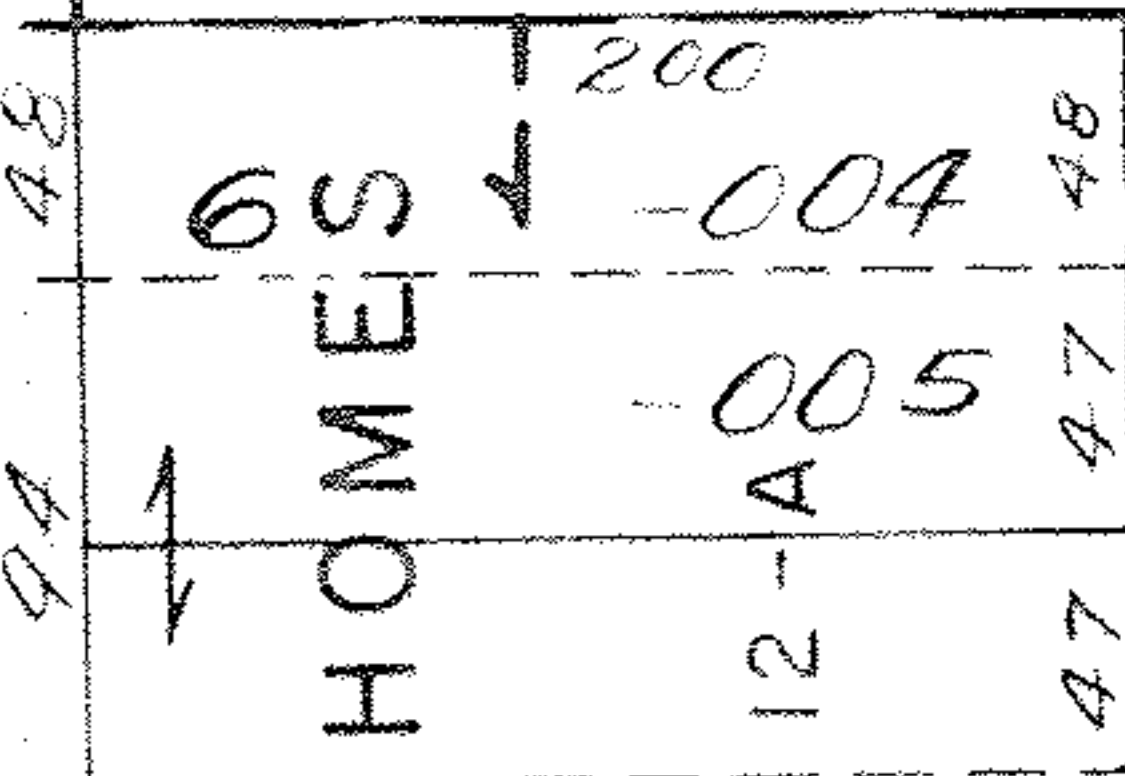
343

40 40



DEC 31 1975

[Handwritten signature]



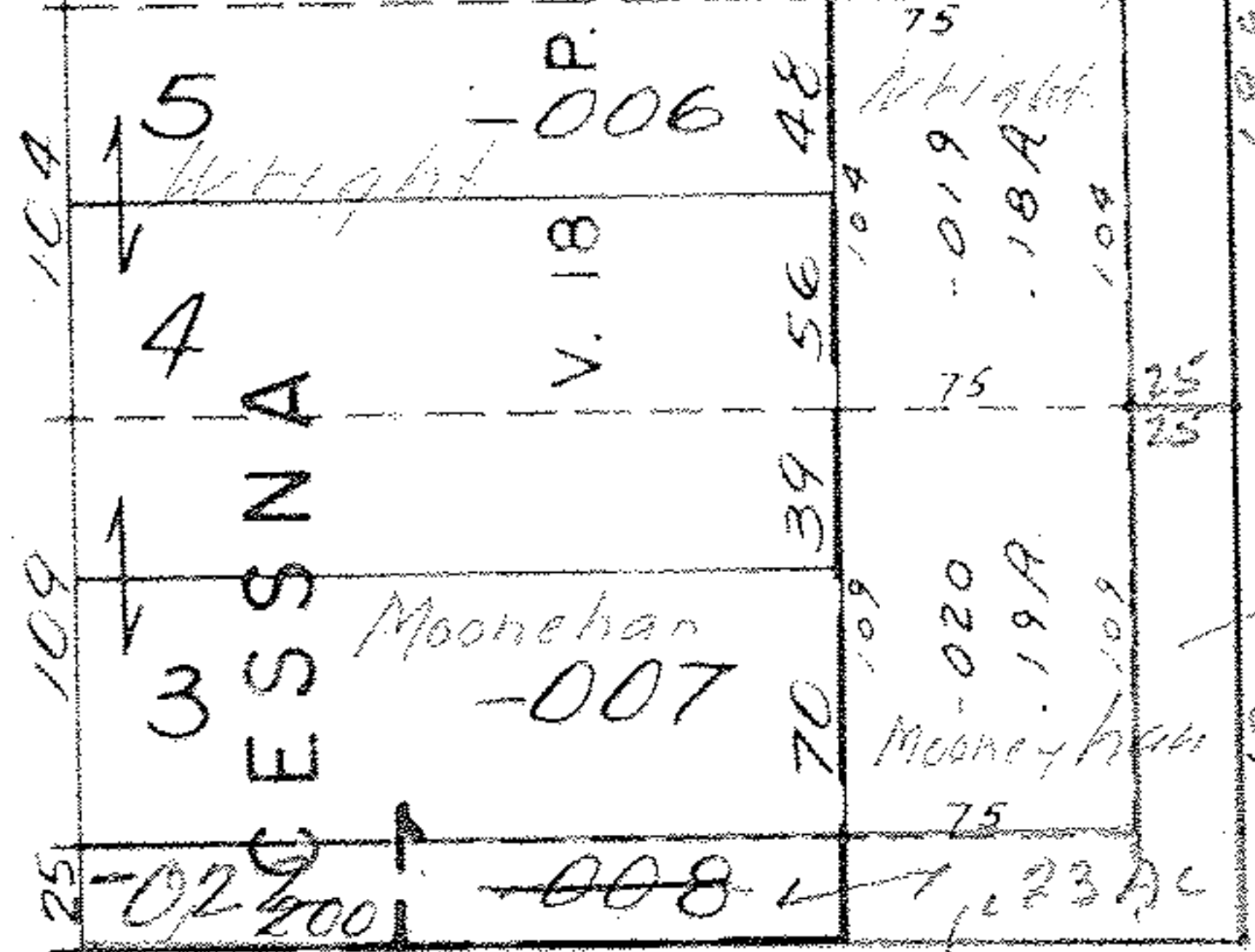
DEC 30 1975

9346

APPROVED
LORAIN CO.
MAP DEPT.
DATE 12-30-75
PAGE 11-00-048
BY L W Hall
VOID AFTER

~~023~~ ~~024~~
~~2473A~~

24.33A



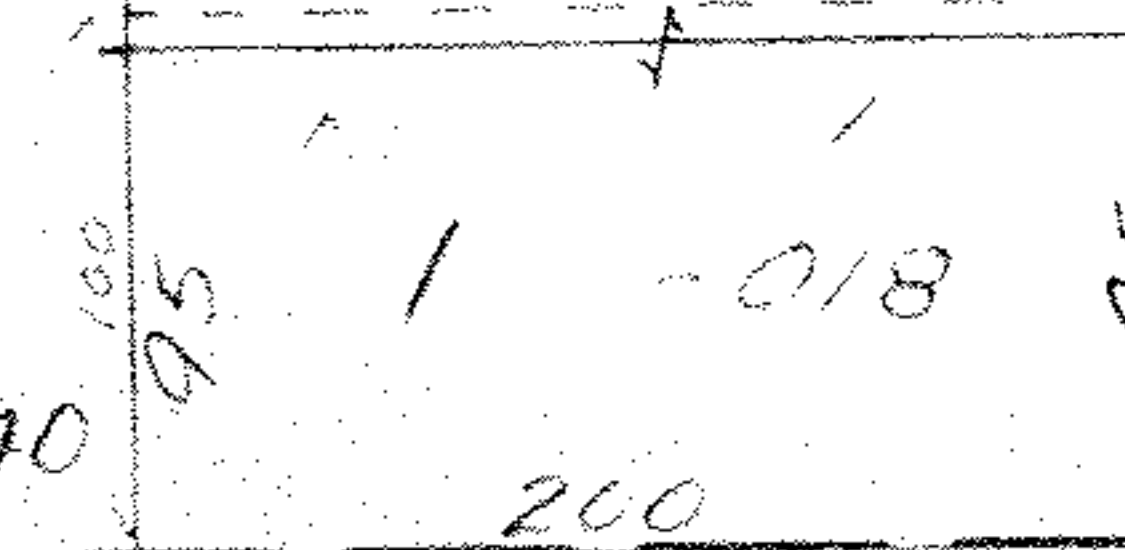
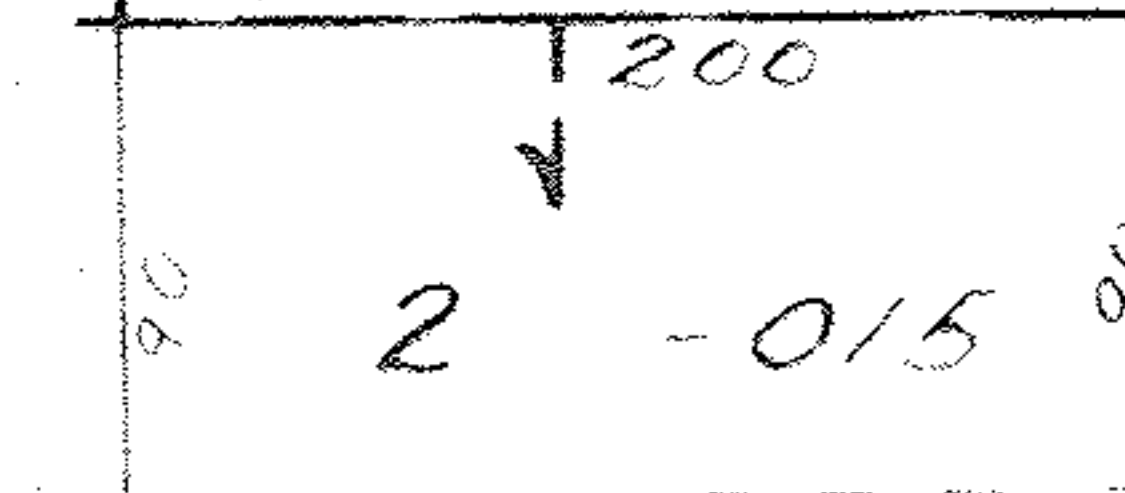
$$25 \times 134 = 3350$$

$$\frac{1875}{5225} = .12 \text{ AC}$$

$$\frac{43560}{11} = 23 \text{ AC}$$

$$75 \times 200 = 5000 \text{ sqft} = .11 \text{ AC}$$

$$75 \times 25 = 1875 \text{ sqft}$$



S 89° 45' 30"

1454.60

SEE 11-D

SEE 11-D