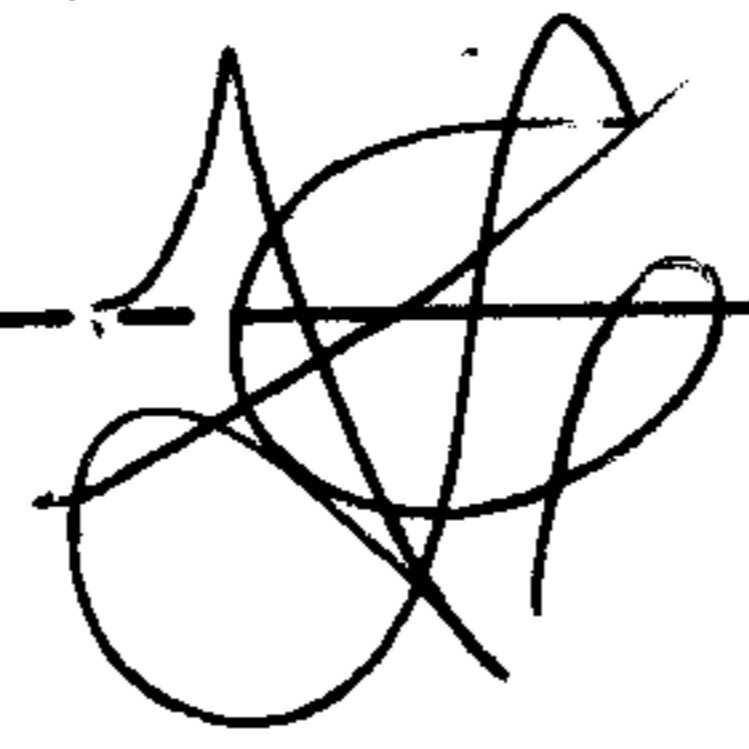
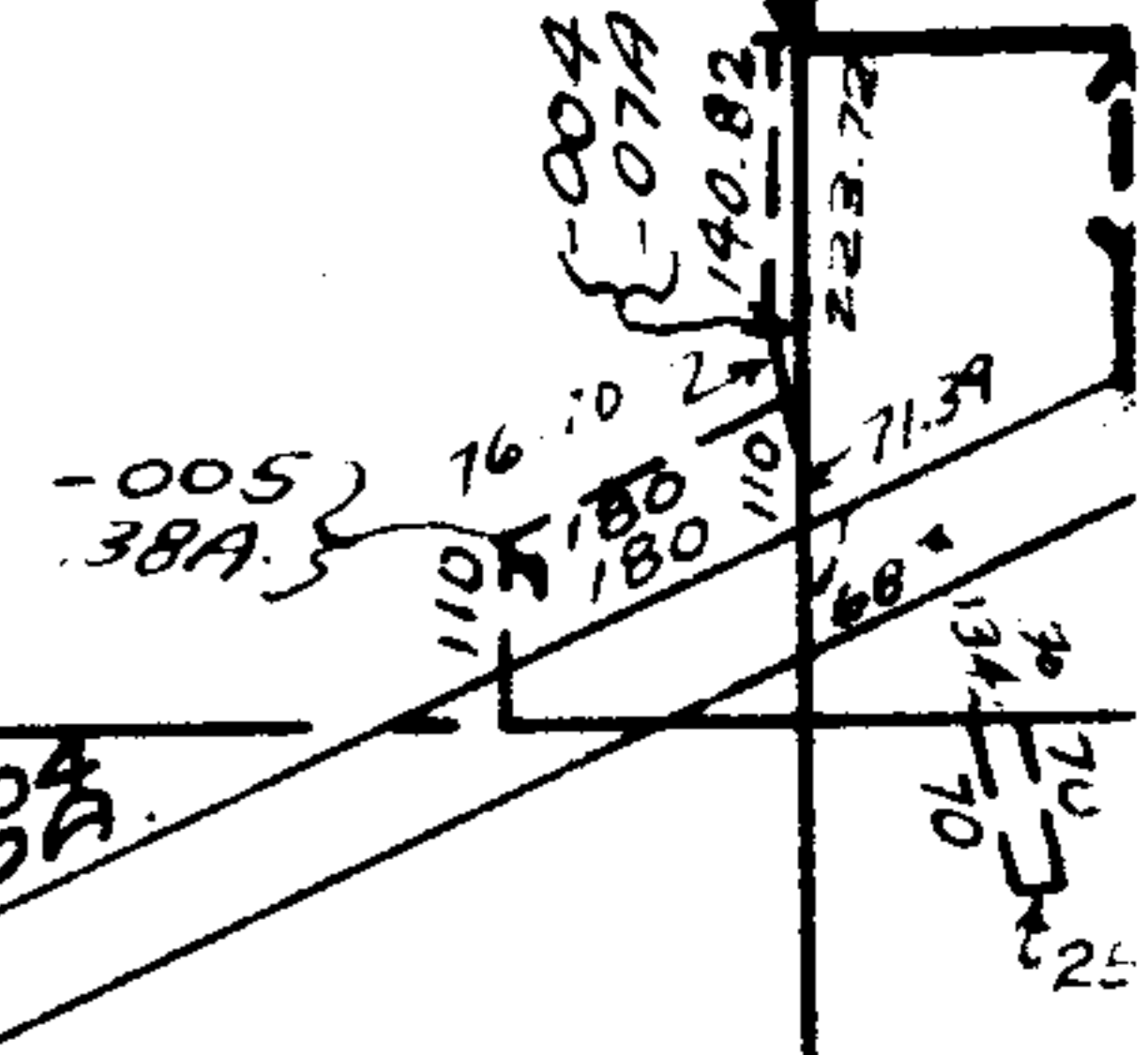


9345

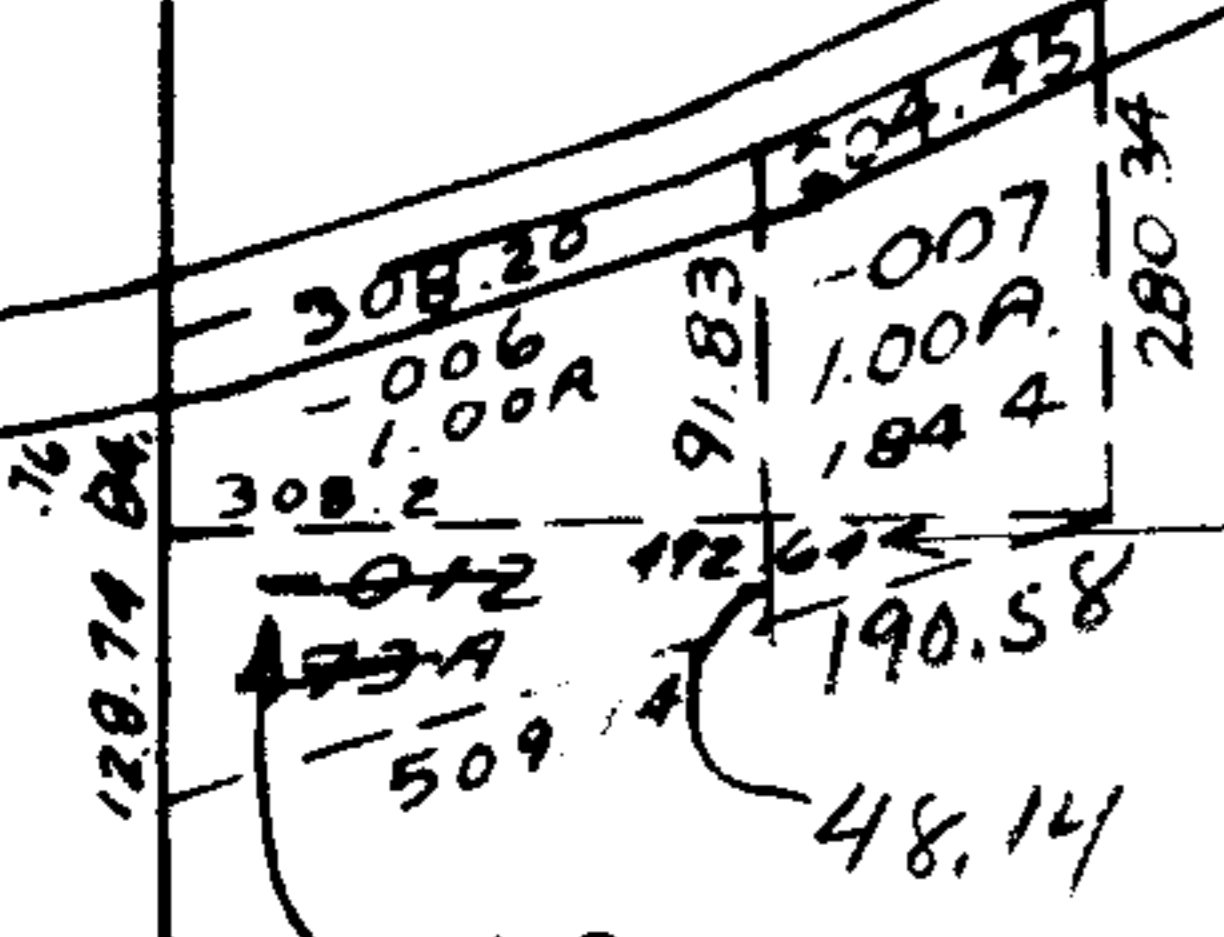
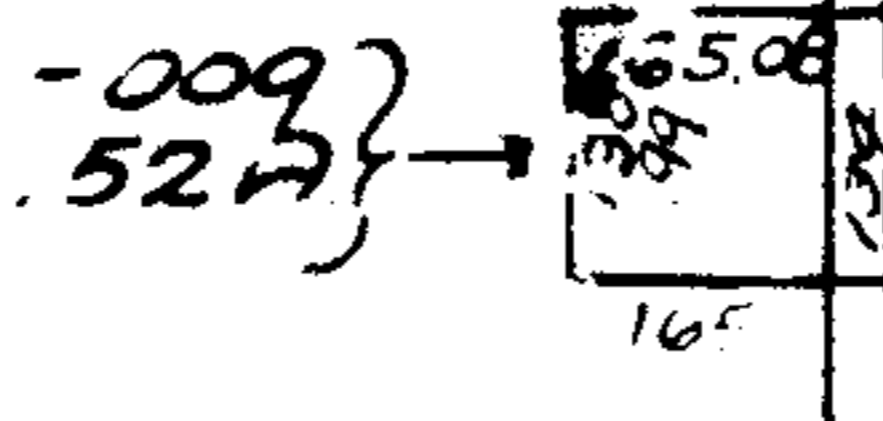
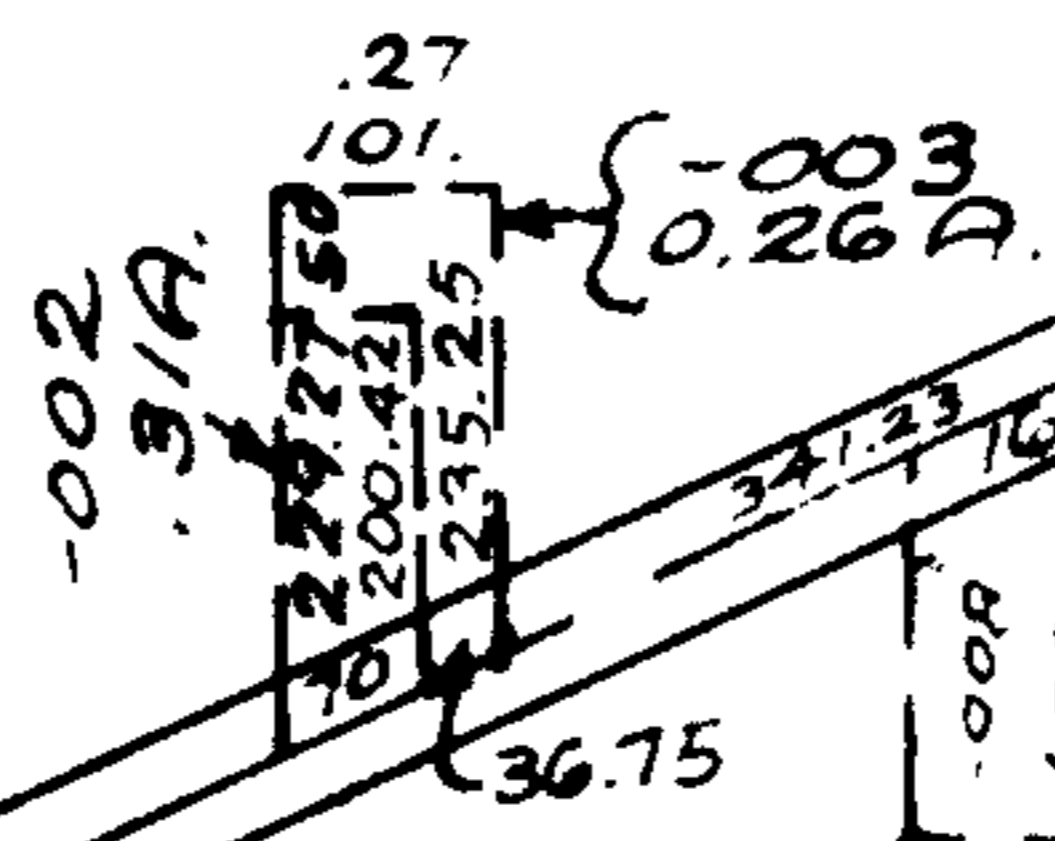
DEC 31 1975



-001
23.18A.



AMH.TW.
ELYRIA



-014
110AC

DEC 30 1975

RD. 73

-010
16.00A.

2005.08

-011
56.00A.

2481.0

-013
45.88A

-015
63AC

9345

APPROVED
LORAIN CO.
MAP DEPT.

DATE 12-30-75

PAGE 54

BY L.V. Hall

VOID
AFTER

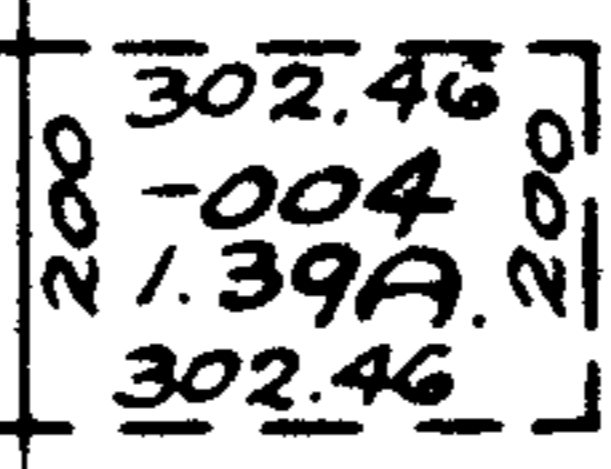
-001
23.00A.

660.69

970.86

752.77

678.43



-031
5.18A.

-005
5.00A.

11