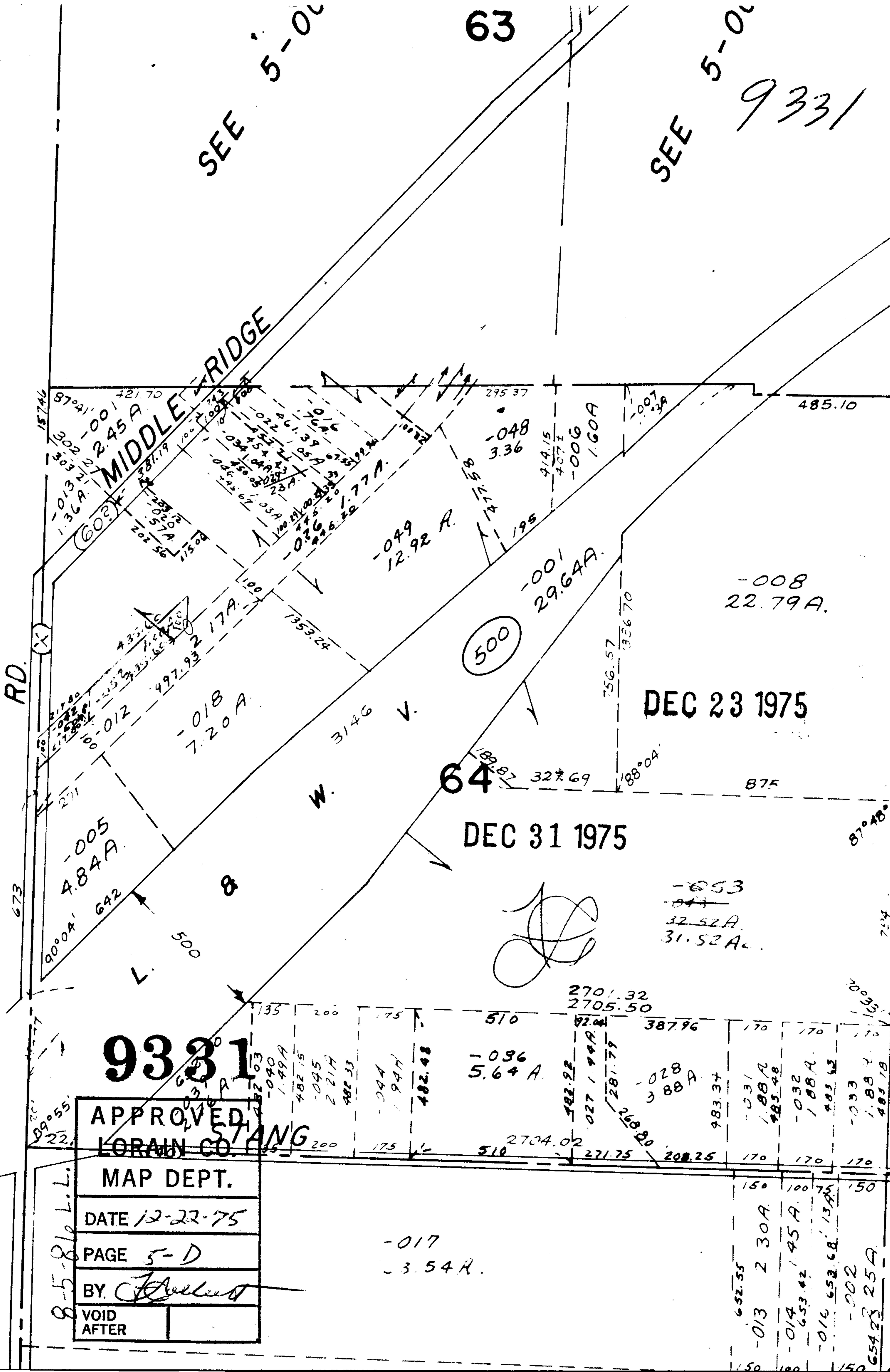


SEE 5-00

63

SEE 5-00  
9331



9331

APPROVED  
LORAIN CO. STANG

MAP DEPT.

DATE 12-22-75

PAGE 5-D

BY. *[Signature]*

VOID  
AFTER

DEC 23 1975

DEC 31 1975

-017  
3.54 A.

-008  
22.79 A.

-053  
32.52 A.  
31.52 A.

500

RD.

MIDDLE BRIDGE

2.45 A

7.20 A

4.84 A

-048  
3.36

-049  
12.92 A.

-001  
29.64 A.

-006  
1.60 A.

485.10

756.57  
1336.70

327.69

875

87°48'

2701.32  
2705.50

-036  
5.64 A.

-028  
3.88 A.

-032  
1.88 A.

-033  
1.88 A.

2704.02

271.75

208.25

170

170

170

652.55  
-013 2.30 A.

653.42  
-014 1.45 A.

654.28  
-002 2.5 A.

8-5-016 L.L.