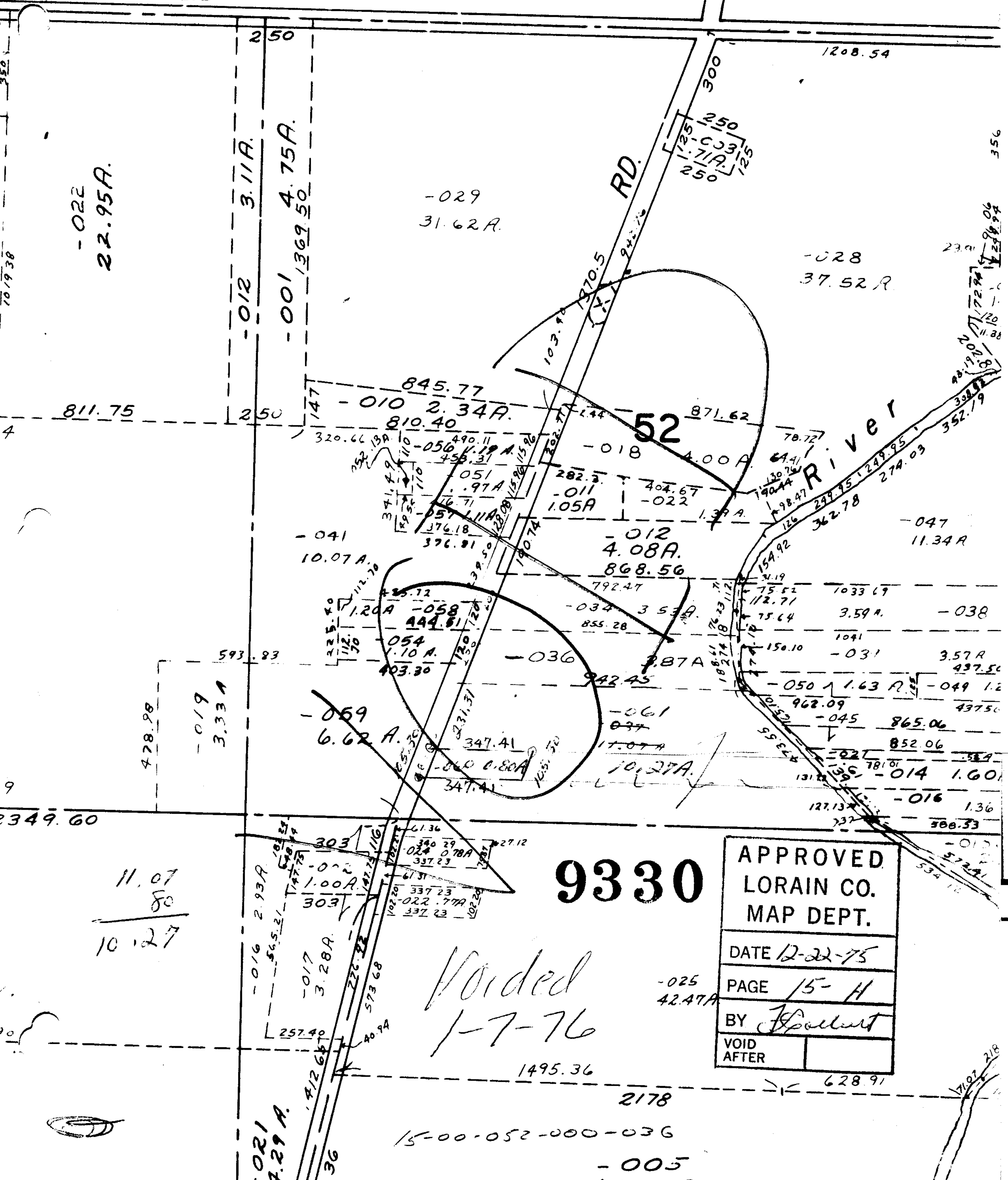


9330

RICHFIELD



-022
22.95A.

-012 3.11A.
-001 1369.50
4.75A.

-029
31.62A.

-028
37.52R.

811.75

250

845.77
-010 2.34A.
810.40

52

871.62

River

-041
10.07A.

-012
4.08A.
868.56

-047
11.34A.

-058
444.61

-034
3.53A.
855.28

-038

-019
3.33A

-059
6.62A.

-061

-031
3.57A.

-049
1.2

43750

865.06

852.06

-014
1.60

-016
1.36

580.33

-010

572.41

534.10

171.02

218

9330

APPROVED
LORAIN CO.
MAP DEPT.

DATE 12-22-75

PAGE 15-H

BY *Spallert*

VOID AFTER

Voided
1-7-76

-025
42.47A

1495.36

2178

15-00-052-000-036

-005

628.91

11.07
80
10.27

-021
4.29A.

36

-016 2.93A
-017 3.28A.

303

303

303

303

303

303

303

303

303

303

303

303

303

303

303

303

303

303

303

303

303

303

303

303

303

303

303

303

303

303

303

303

303

303

303

303

303

303

303

303