

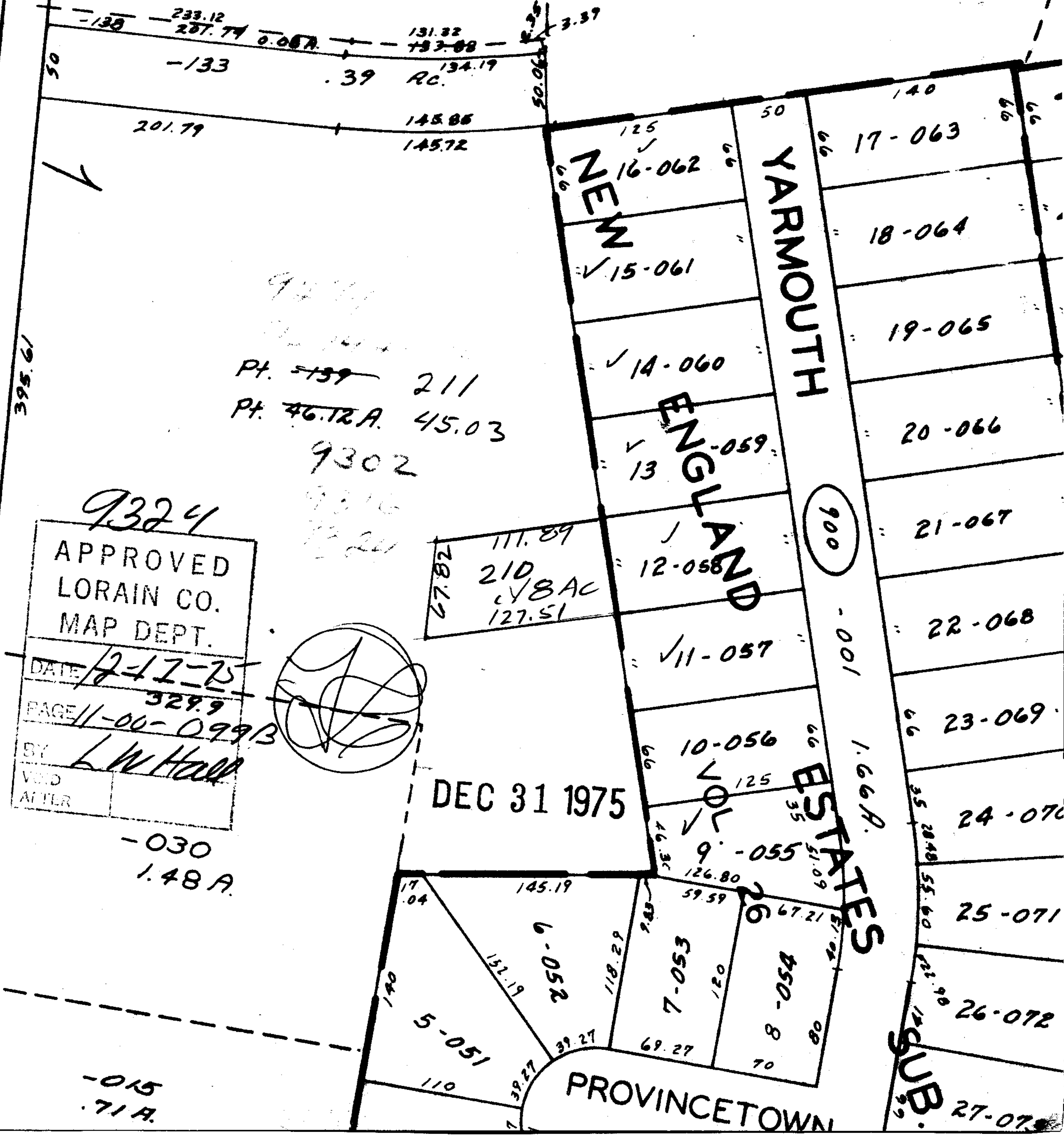
7.56A.

57

-137
5.30A.

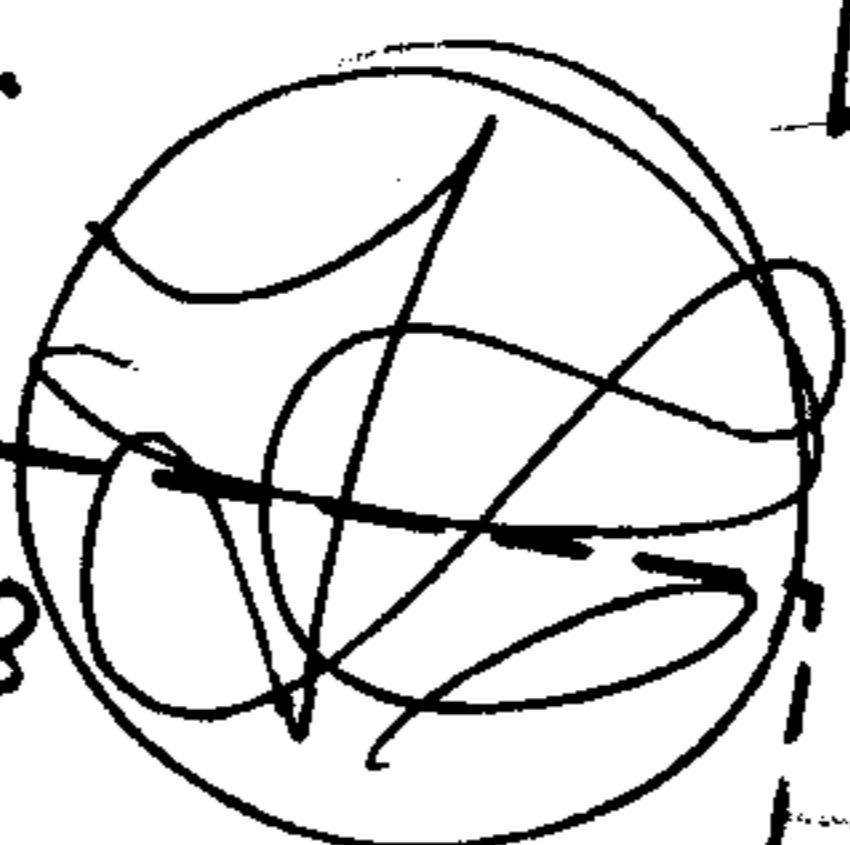
9324

DEC 18 1975



9324
 Pt. 5139 211
 Pt. 46.12A. 45.03
 9302

9324
 APPROVED
 LORAIN CO.
 MAP DEPT.
 DATE 12-17-75
 PAGE 11-00-099B
 BY L.W. Hall
 VED
 ATTLR



DEC 31 1975

-030
1.48A.

-015
.71A.

PROVINCETOWN

YARMOUTH

ENGLAND

ESTATES

SUB.

900

1001

1.66A.

140

17-063

18-064

19-065

20-066

21-067

22-068

23-069

24-070

25-071

26-072

27-073

18.672

279.81

3.39

50.065

125

16-062

15-061

14-060

13-059

12-058

11-057

10-056

9-055

8-054

7-053

6-052

5-051

170

192.06

134.19

131.32

133.08

134.19

145.86

145.72

201.79

233.12

287.74

0.057

133

39

RC.

134.19

131.32

133.08

134.19

145.86

145.72

201.79

233.12

287.74

0.057

133

39

RC.

134.19

131.32

133.08

134.19

145.86

145.72

201.79

233.12

287.74

0.057

133

39

RC.

134.19

131.32

133.08

134.19

145.86

145.72

201.79

233.12

287.74

0.057

133

39

RC.

134.19

131.32

133.08

134.19

145.86

145.72

201.79

233.12

287.74

0.057

133

39

RC.

134.19

131.32

133.08

134.19

145.86

145.72

201.79

233.12

287.74

0.057

133

39

RC.

134.19

131.32

133.08

134.19

145.86

145.72

201.79

233.12

287.74

0.057

133

39

RC.

134.19

131.32

133.08

134.19

145.86

145.72

201.79

233.12

287.74

0.057

133

39

RC.

134.19

131.32

133.08

134.19

145.86

145.72

201.79

233.12

287.74

0.057

133

39

RC.

134.19

131.32

133.08

134.19

145.86

145.72

201.79

233.12

287.74

0.057

133

39

RC.

134.19

131.32

133.08

134.19

145.86

145.72

201.79

233.12

287.74

0.057

133

39

RC.

134.19

131.32

133.08

134.19

145.86

145.72

201.79

233.12

287.74

0.057

133

39

RC.

134.19

131.32

133.08

134.19

145.86

145.72

201.79

233.12

287.74

0.057

133

39

RC.

134.19

131.32

133.08

134.19

145.86

145.72

201.79

233.12

287.74

0.057

133

39

RC.

134.19

131.32

133.08

134.19

145.86

145.72

201.79

233.12

287.74

0.057

133

39

RC.

134.19

131.32

133.08

134.19

145.86

145.72

201.79

233.12

287.74

0.057

133

39

RC.

134.19

131.32

133.08

134.19

145.86

145.72

201.79

233.12

287.74

0.057

133

39

RC.

134.19

131.32

133.08

134.19

145.86

145.72

201.79

233.12

287.74

0.057

133

39

RC.

134.19

131.32

133.08

134.19

145.86

145.72

201.79

233.12

287.74