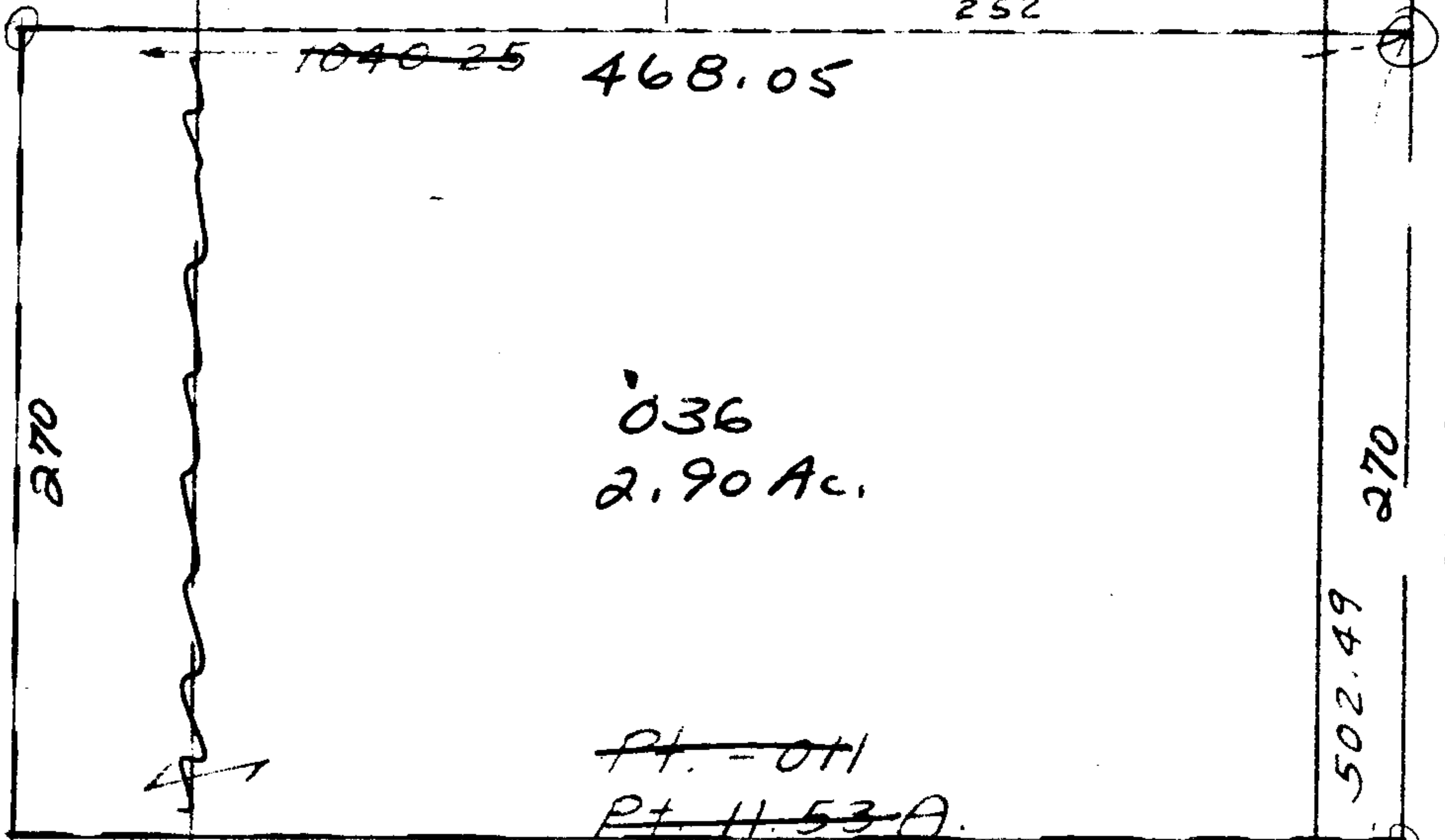


9310

DEC 22 1975
Pt. 333
Pt. 4.60 A.

-010
.29 A.
252
-032
59 A.
252



DEC 91 1975

9310

APPROVED
LORAIN CO.
MAP DEPT.

DATE 12-11-75

PAGE 3-00-107B

BY *[Signature]*

VOID AFTER

2-15-75
P. 107B

101

Pt. 037
Pt. 8.63 Ac.

206.8
-012
0.47 A.
206.8

1040.25
468.05
572.20
290.40

11.53
2.90
8.63
-011
1.00 A.

290.80
300
-013
87 A.

102

-011
11.7

Pt. -00
Pt. 2.20

1040.25
637.27

112
75
150
75
150
65
675
788