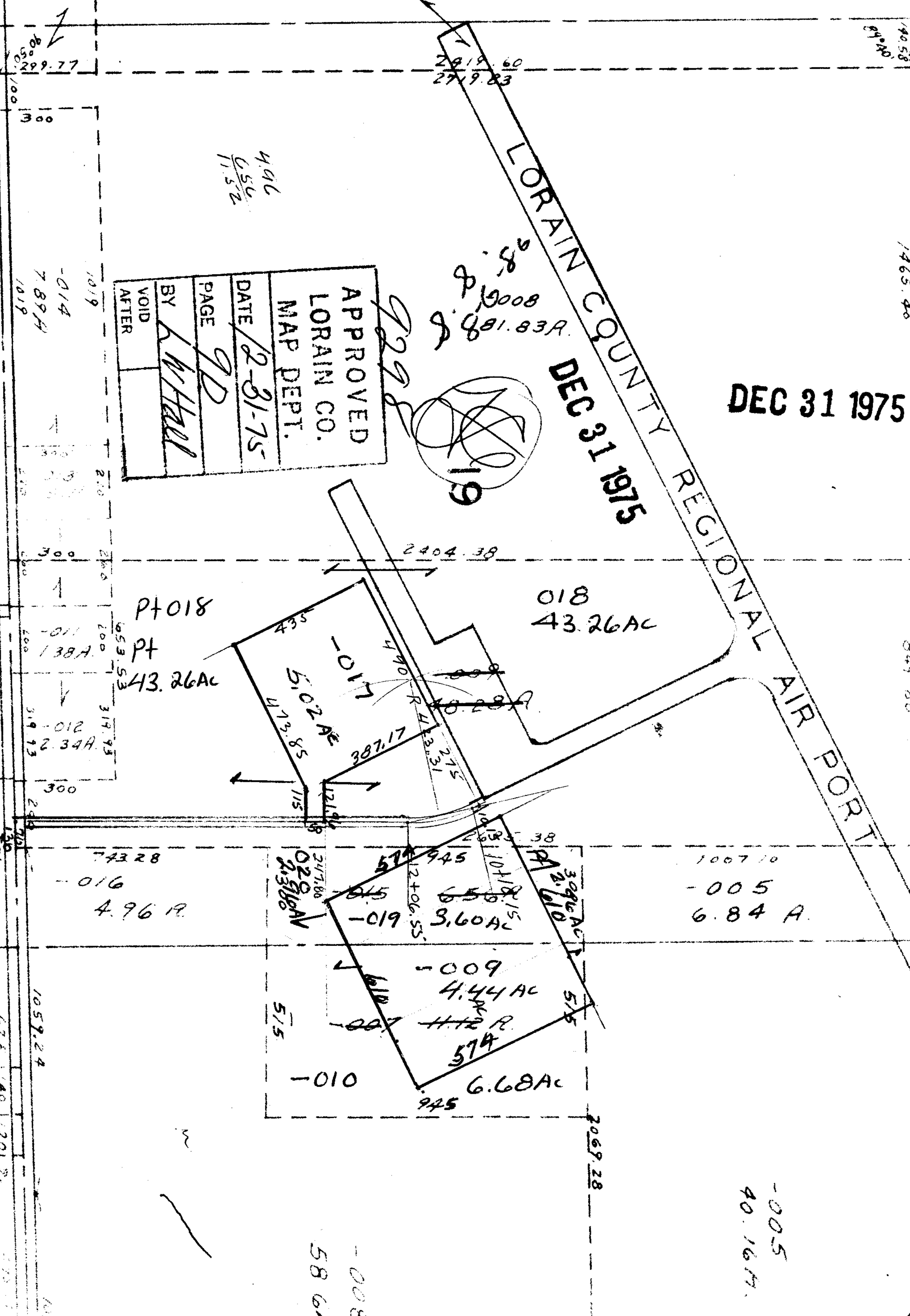


9298

J. S. C. D.



APPROVED
LORAIN CO.
MAP DEPT.
DATE 2-21-75
PAGE 9D
BY *L. W. Hall*
VOID AFTER

19

DEC 31 1975

DEC 31 1975

LORAIN COUNTY REGIONAL AIR PORT

4.96
6.56
11.52

8.50
8.10008
8.881.83A

800.00
299.77
100

2819.60
2719.83

14058
8940

976.71

1465.40

506.72

849.88

580.44

1068.19
2053.09

-014
7.89A
1019

Pt 018
Pt
43.26 AC
-011
138A
-012
2.34A
319.73
319.73

253.25
-006
1.16A
253.35

743.28
-016
4.96 AC

1059.24
-009
4.44 AC
H. H. R.
574

376
-006
1.21A
376
-004
1.04A
375.23

2404.38
435
5.02 AC
4.13.85
387.17
490
7.75
121.88
115

574
945
12+06.55
-019
3.60 AC
6.50
10.11
1.15
3.09 AC
2.610
575
-010
6.68 AC
945

1067.10
-005
6.84 A.

-008
58.62

-005
40.16A

2069.28