

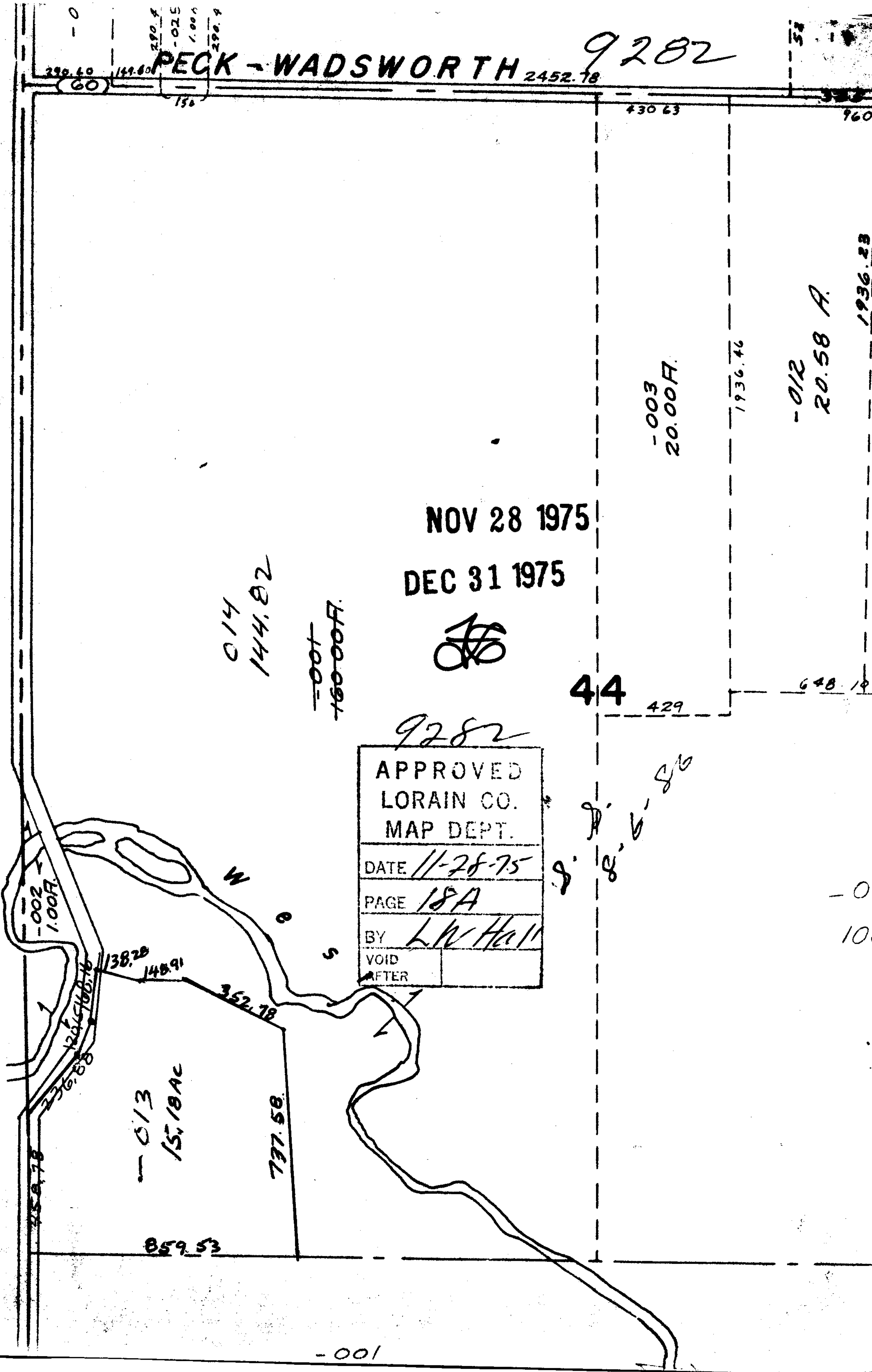
290.40  
149.60  
290.4  
-025  
1.004  
290.4

# PECK - WADSWORTH

9282

2452.78

SEE 17-D



NOV 28 1975  
DEC 31 1975

*[Handwritten signature]*

9282

APPROVED
LORAIN CO.
MAP DEPT.
DATE 11-28-75
PAGE 18A
BY L.W. Hall
VOID AFTER

44

-003  
20.00F.

1936.46

-012  
20.58 A.

1936.23

-013  
15.18AC

737.58

859.53

-001

-0  
10