

35-86 L.L.

9279

APPROVED
LORAIN CO.
MAP DEPT.

DATE 11-24-75

PAGE 7-00-012-A

BY. *E. G. Galt*

VOID
AFTER

DEC 31 1975

-047

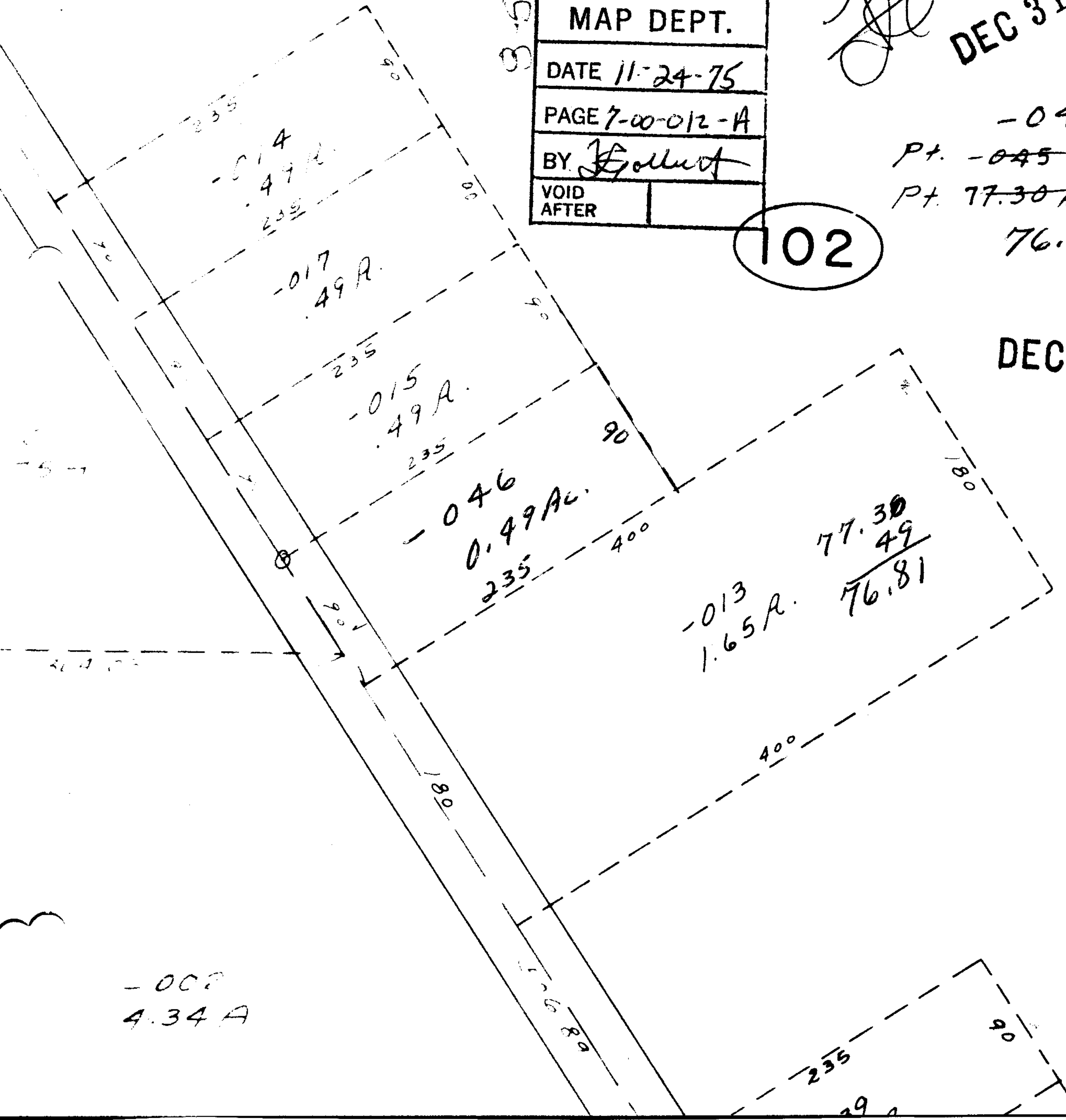
Pt. -045

Pt. 77.30 R

76.81 Ac

102

DEC 11 1975



-008
4.34 A