

6-5

W.

NOV 13 1975

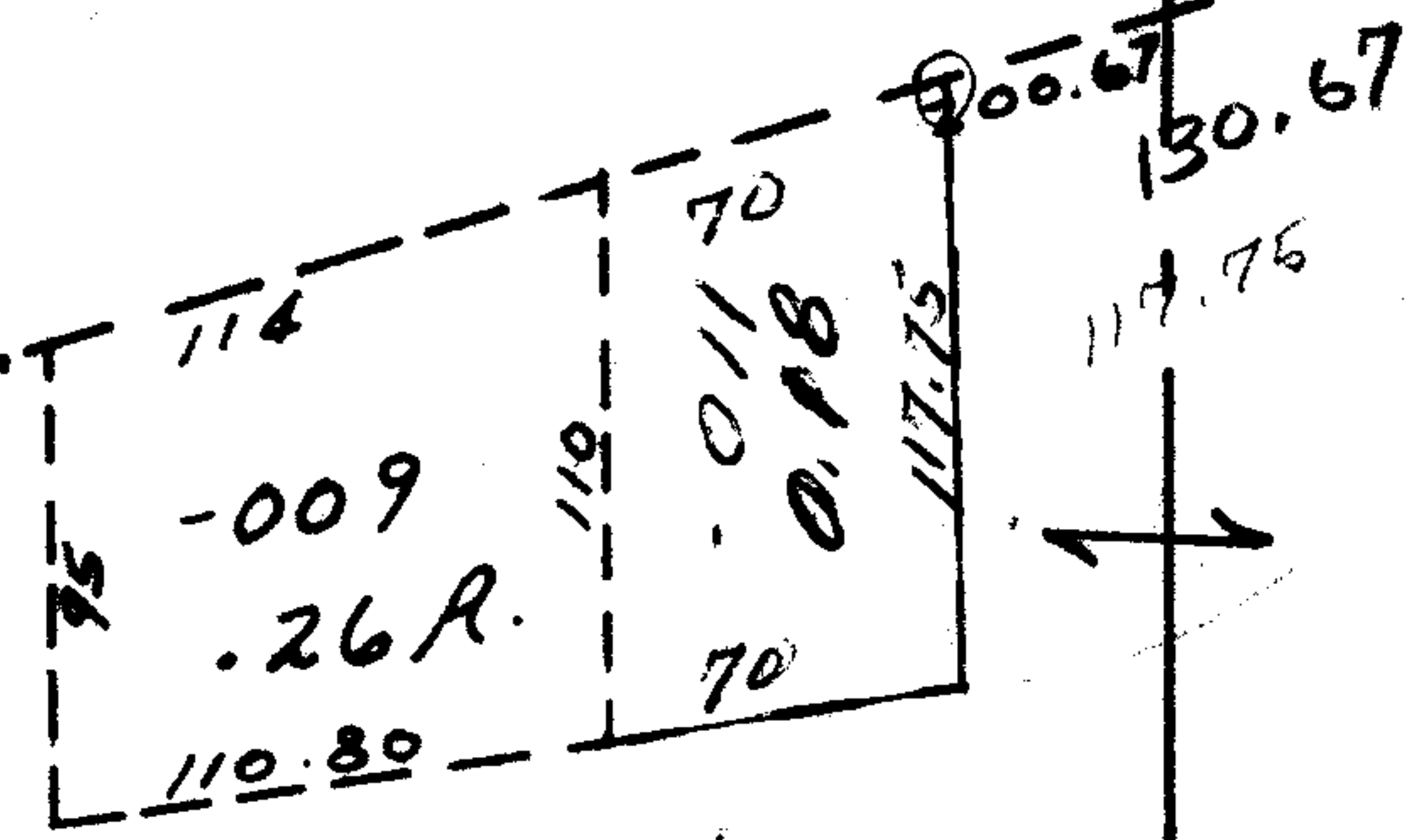
V.

SEE MAP 6-5

LAKE AVE.

-007
7.29A.

1054.64



-012
~~010~~
3.33A.
3.15Ac.

9246

9246

DEC 1 1975

APPROVED	
LORAIN CO.	
MAP DEPT.	
DATE	11-12-75
PAGE	6-23
BY	<i>[Signature]</i>
VOID AFTER	



Change →

200.67
76
130.

3.33
18
3.15
PT. -002
PT. 11.00A.

SEE MAP 6-24
537