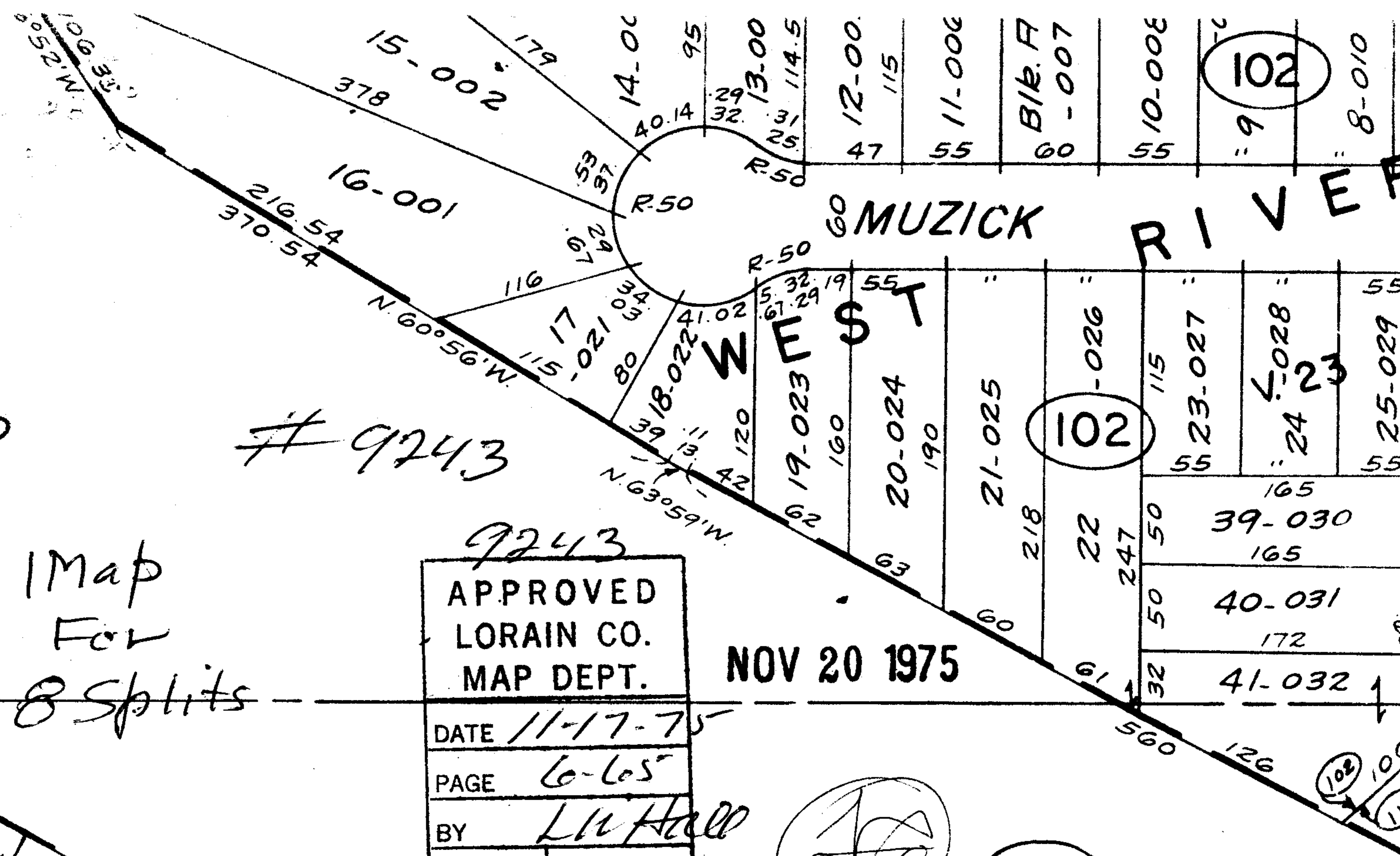


OHIO



# 9243

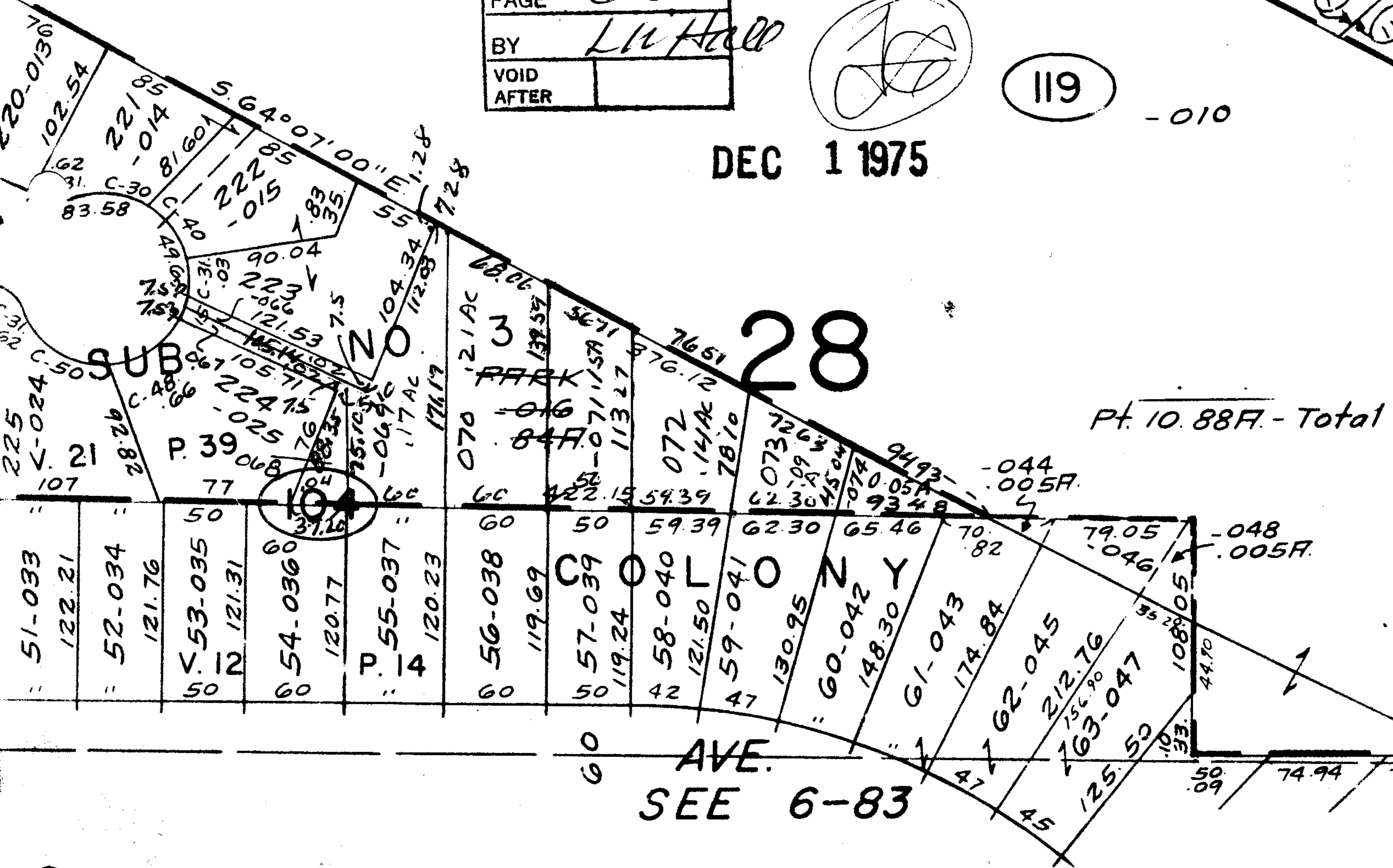
1 Map For 8 Splits

9243

APPROVED
LORAIN CO.
MAP DEPT.
DATE 11-17-75
PAGE 6-65
BY L.H. Hall
VOID AFTER

NOV 20 1975

DEC 1 1975



28

Pt. 10.88A - Total

AVE. SEE 6-83

WEST OF RIVER PT. LOTS 28,