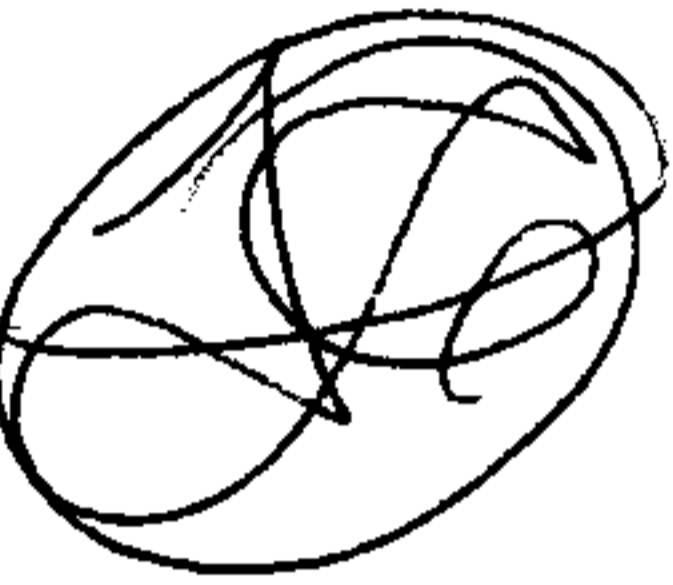


SEE 6-109

9218

NOV 3 1975

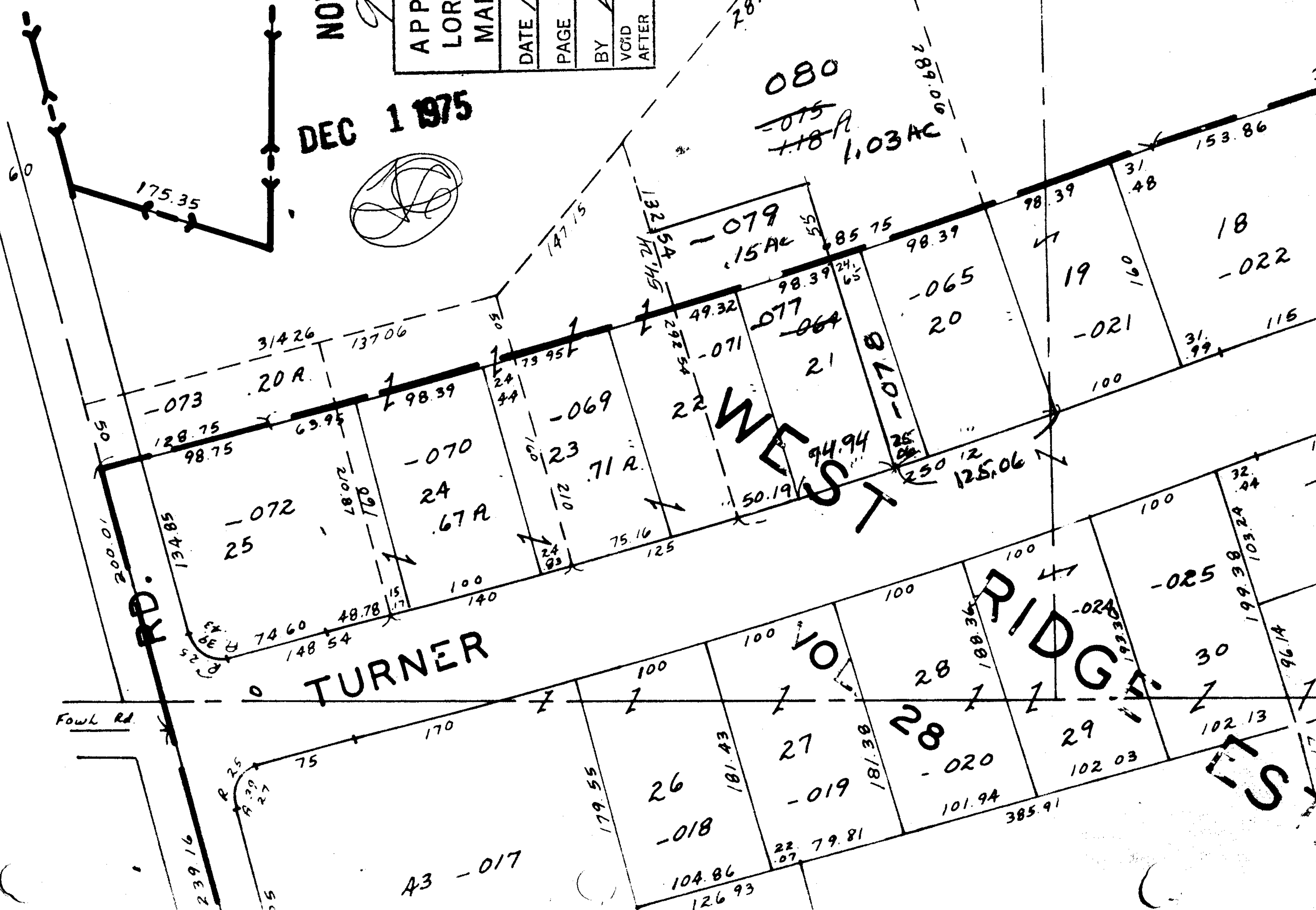
DEC 1 1975



APPROVED					
LORAIN CO.					
MAP DEPT.					
DATE	11-3-75				
PAGE	6-710				
BY	L. W. Hall				
VOID AFTER					

-076

10.19 A.



RD. TURNER

Fowl Rd.

TURNER

WEST

RIDGE

WEST

A3 -017

080

-075
+18 A

1.03 AC

-079
.15 AC

-077
-064
21

-065
20

-021
100

-022
115

-072
25

-070
24
.67 A

-069
23
.71 A

-018
26

-019
27

-020
28

-024
29

-025
30

175.35

128.75
98.75

134.85

200.01

239.16

314.26

137.06

74.60

48.78

75

170

100

140

104.86

126.93

147.15

132.54

49.32

75.16

125

100

179.55

181.43

181.38

98.39

50.19

100

100

101.94

102.03

102.13

85.75

94.94

100

100

101.94

102.03

102.13

98.39

250.12

100

100

101.94

102.03

102.13

102.13

98.39

125.06

100

100

101.94

102.03

102.13

102.13

98.39

250.12

100

100

101.94

102.03

102.13

102.13

98.39

125.06

100

100

101.94

102.03

102.13

102.13

98.39

125.06

100

100

101.94

102.03

102.13

102.13

98.39

125.06

100

100

101.94

102.03

102.13

102.13

3

153.86

18

115

11

100

100

102.13

102.13

102.13