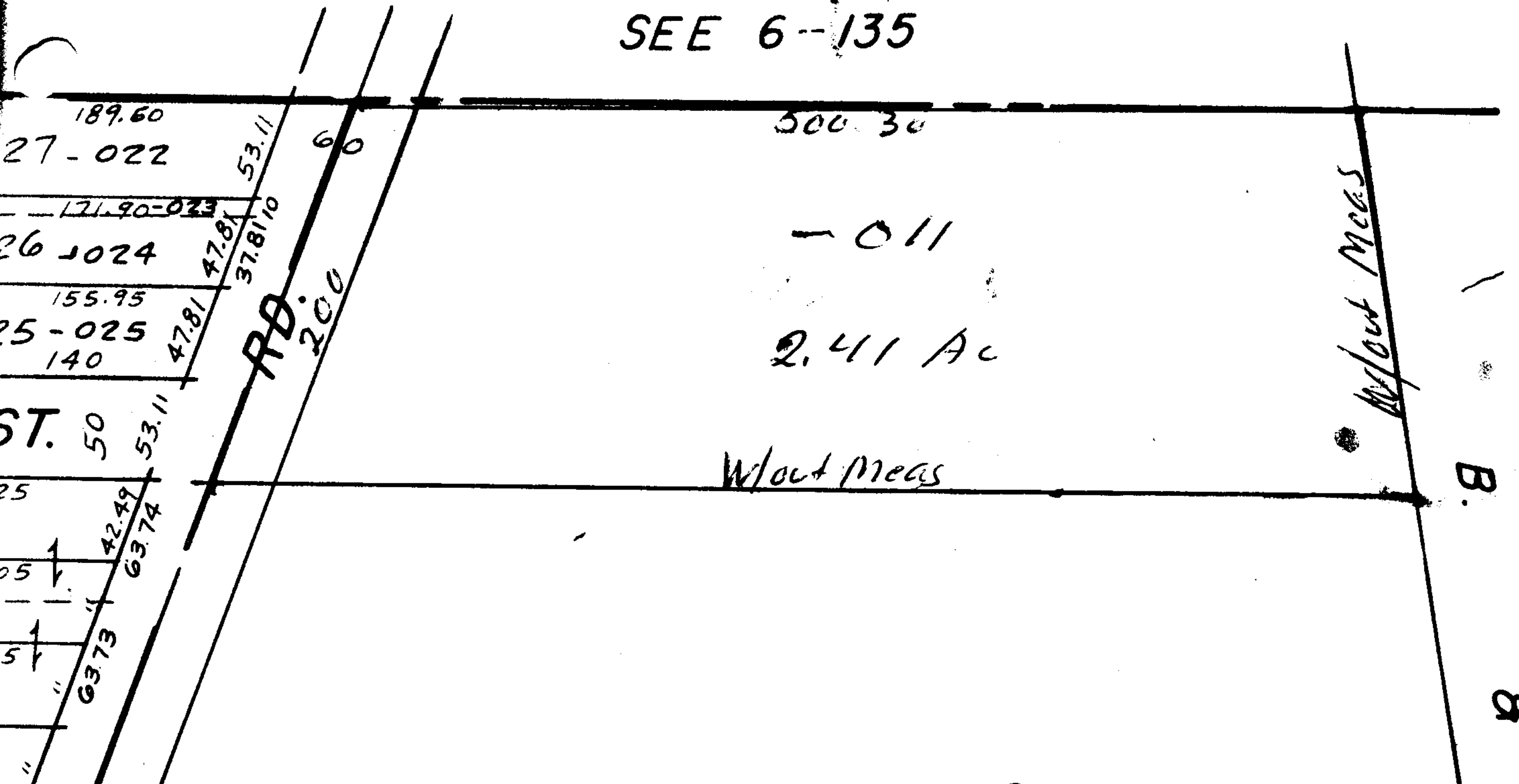


9211

SEE 6-135

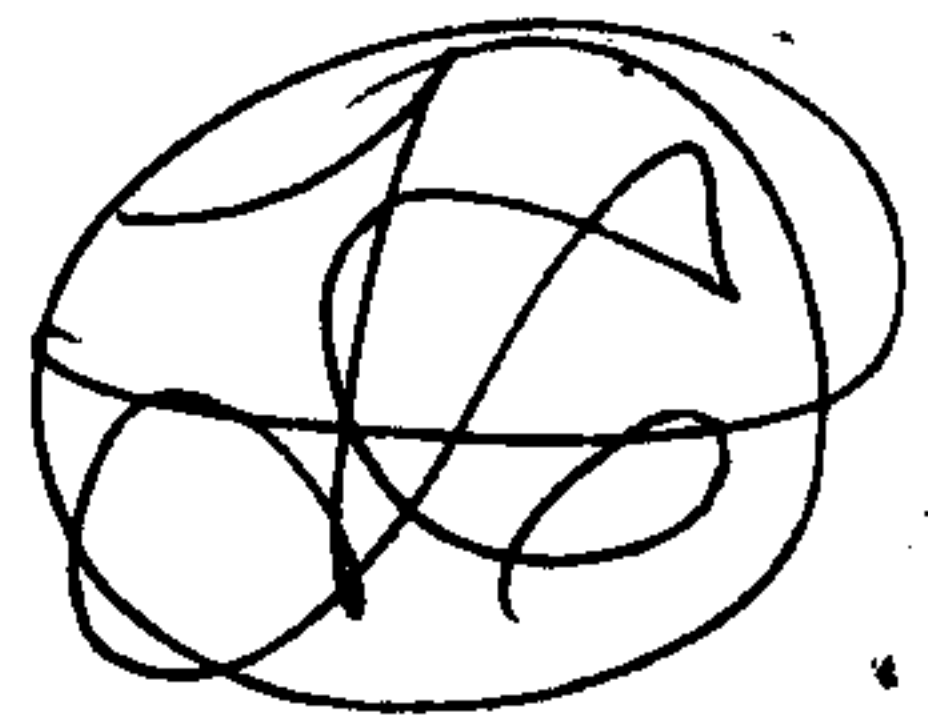


OCT 31 1975

DEC 31 1975

9211

APPROVED	
LORAIN CO.	
MAP DEPT.	
DATE	10-29-75
PAGE	10-00-003B
BY	L. W. Hall
VOID	
REISSUE	



8
86-84



012
~~001~~
~~25.95A.~~
 23.54 AC