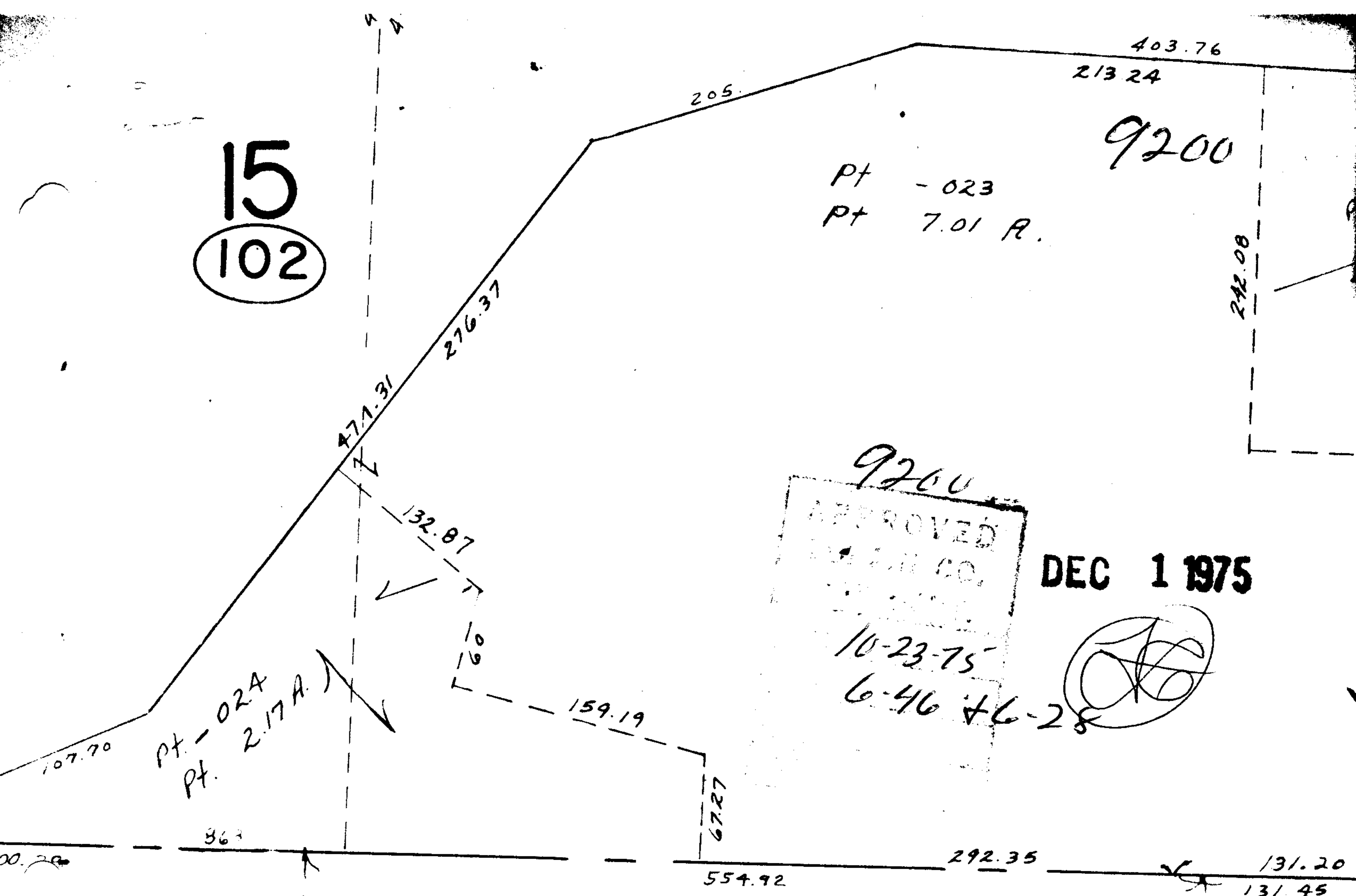


15  
102



9200

Pt - 023  
Pt 7.01 R.

9200  
 APPROVED  
 [illegible]  
 10-23-75  
 6-46 & 6-28

DEC 1 1975

*(Handwritten signature)*

Pt - 02A  
Pt. 2.17 A.)

OCT 29 1975

~~Pt - 024~~  
~~Pt - 7.53 R.~~

Pt 02C  
Pt 7.49 AC

16  
102

-020  
10.18 A.

SEE 6-46

441.30

266.54