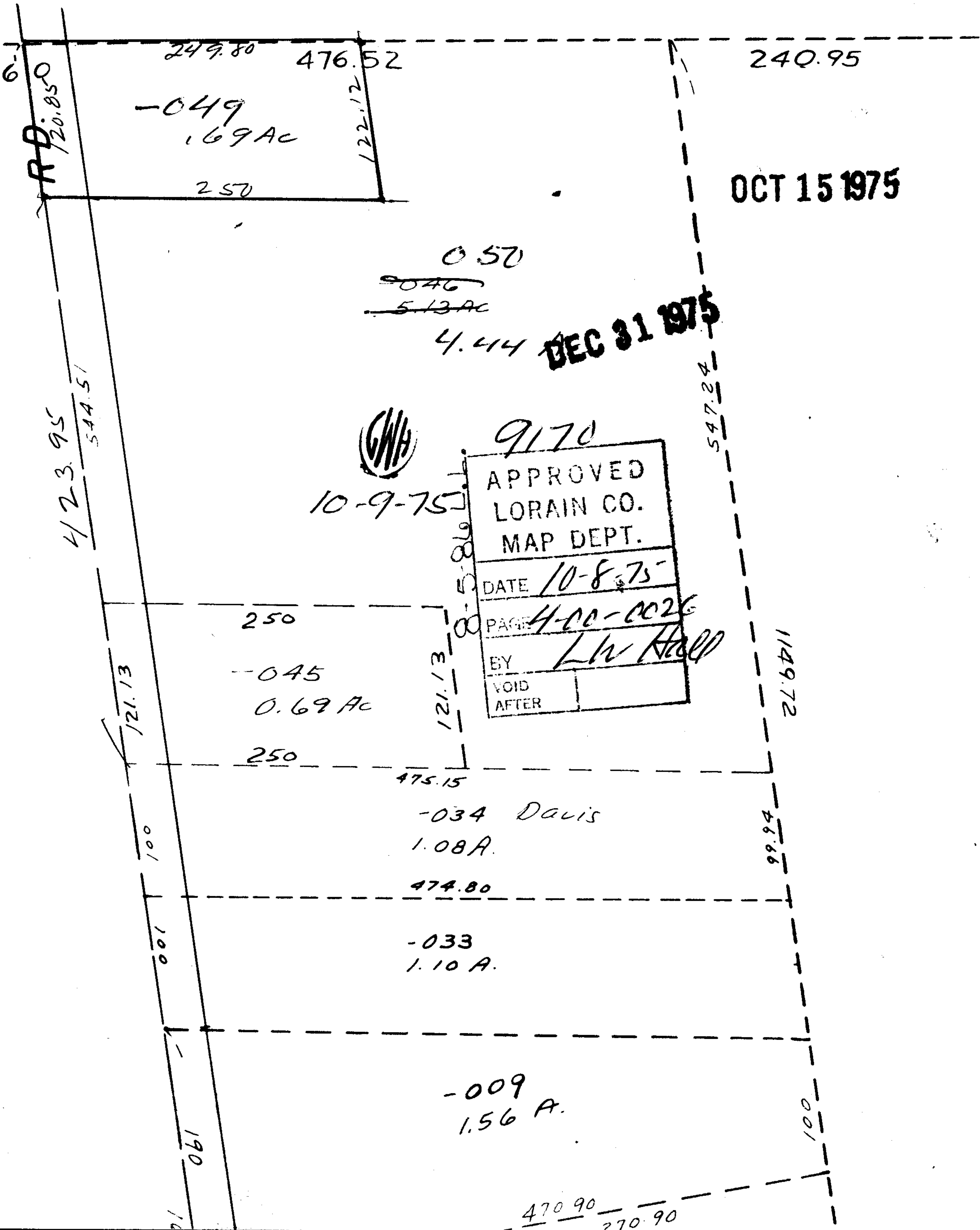


9170



-049
1.69 Ac

250

249.80 476.52

122.12

240.95

OCT 15 1975

0.50

~~0.46~~

~~5.13 Ac~~

4.44

DEC 31 1975



10-9-75

9170

APPROVED
LORAIN CO.
MAP DEPT.

DATE 10-8-75

PAGE 4-00-0026

BY L.W. Hall

VOID
AFTER

250

-045
0.69 Ac

250

475.15

-034 Davis
1.08 A.

474.80

-033
1.10 A.

-009
1.56 A.

470.90
270.90

R.D. 20.850

423.95
544.51

121.13

100

100

190

121.13

547.24

1149.72

99.94

100