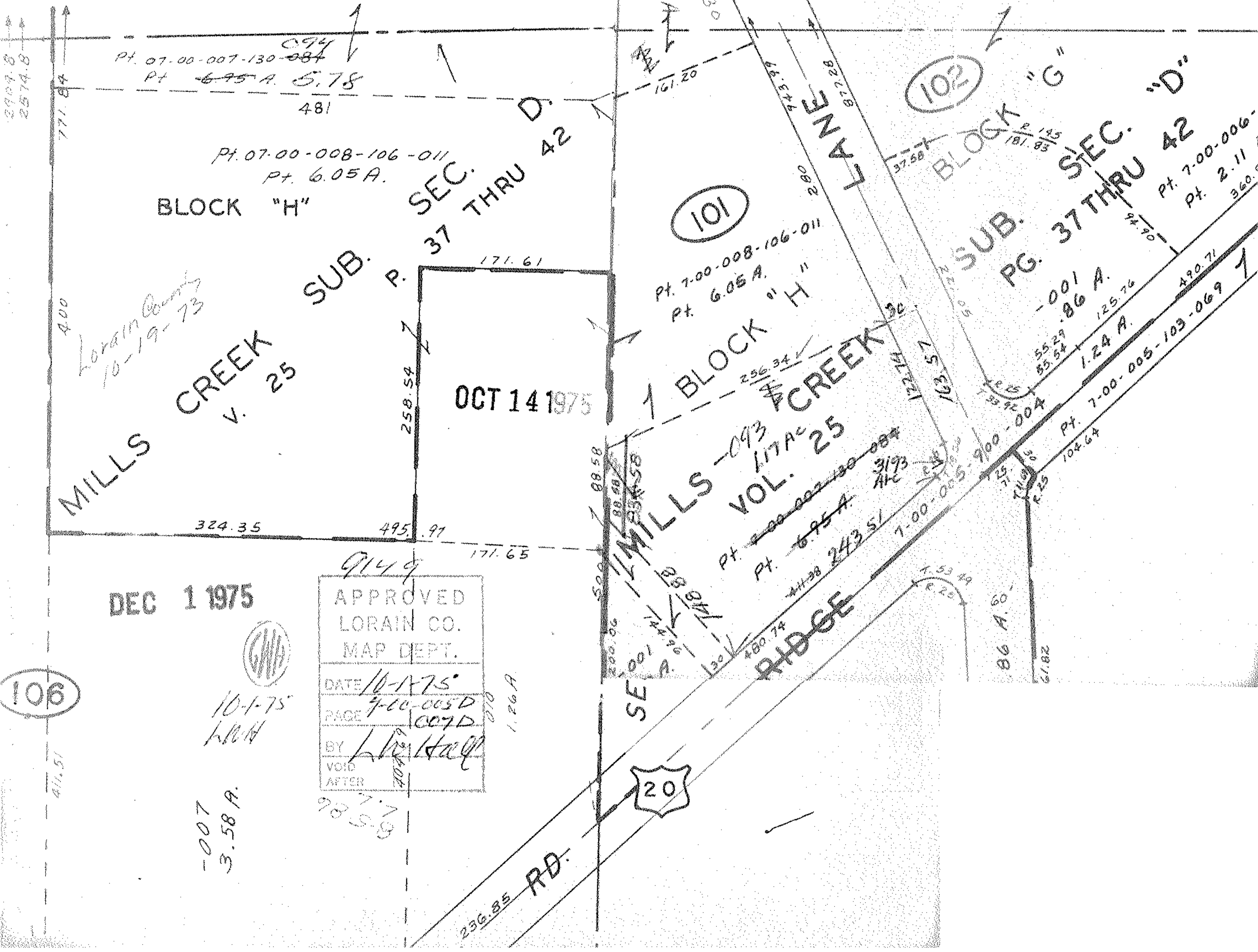


7390

DU 1088 Pg 33

SEE 7-00-0

9149



2909.8
2574.8

771.84

400

Pt. 07-00-007-130-084
Pt. 6.95 A. 5.78

481

Pt. 07-00-008-106-011
Pt. 6.05 A.

BLOCK "H"

SUB. R. 37 THRU 42
SEC. 37 THRU 42

171.61

OCT 14 1975

258.54

324.35

495.97

171.65

DEC 1 1975

9149

APPROVED
LORAIN CO.
MAP DEPT.
DATE 10-1-75
PAGE 7-00-005D
007D
BY [Signature]
VOID AFTER

1.26 A

10-1-75
[Signature]

-007
3.58 A.

987.7
7.5
99

101

Pt. 7-00-008-106-011
Pt. 6.05 A. "H"

BLOCK "H"

MILLS - 093
117 AC
VOL. 25

Pt. 6.95 A.
Pt. 243.51

20

236.85 RD.

102

BLOCK "G"
SUB. PG. 37 THRU 42
SEC. "D"

-001
86 A.
1.24 A.

Pt. 7-00-006-
Pt. 2.11
360.5

Pt. 7-00-005-103-069
104.64

86 A.6

28.19

Pt. 07-00-011-130
Pt. 161.20

LANE

37.58

P. 145
181.85

2.80

2.80

256.34

172.14

103.57

Pt. 7-00-004-
55.29
85.54

125.76

490.71

1.53 A.

R. 25

R. 25

104.64