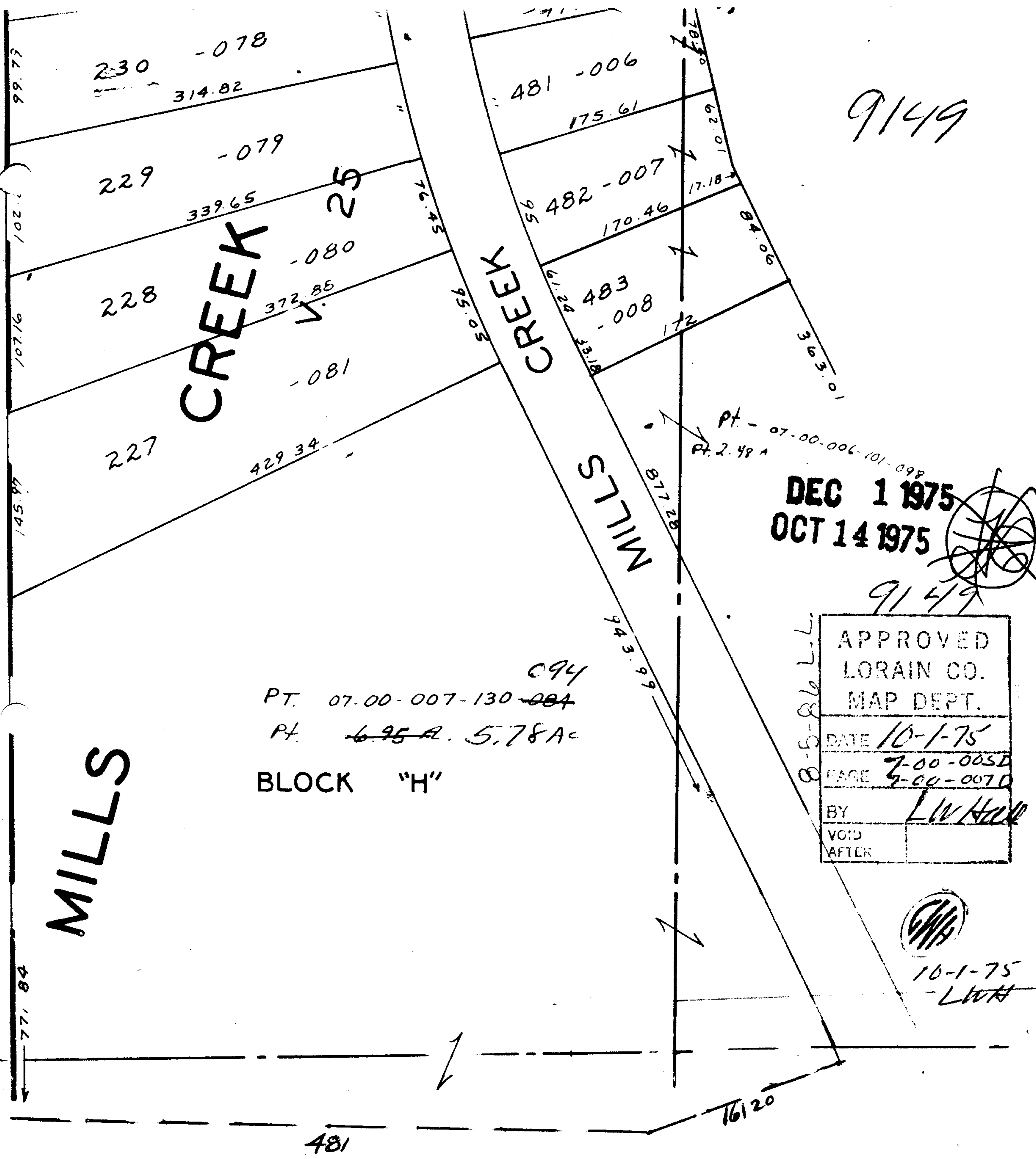
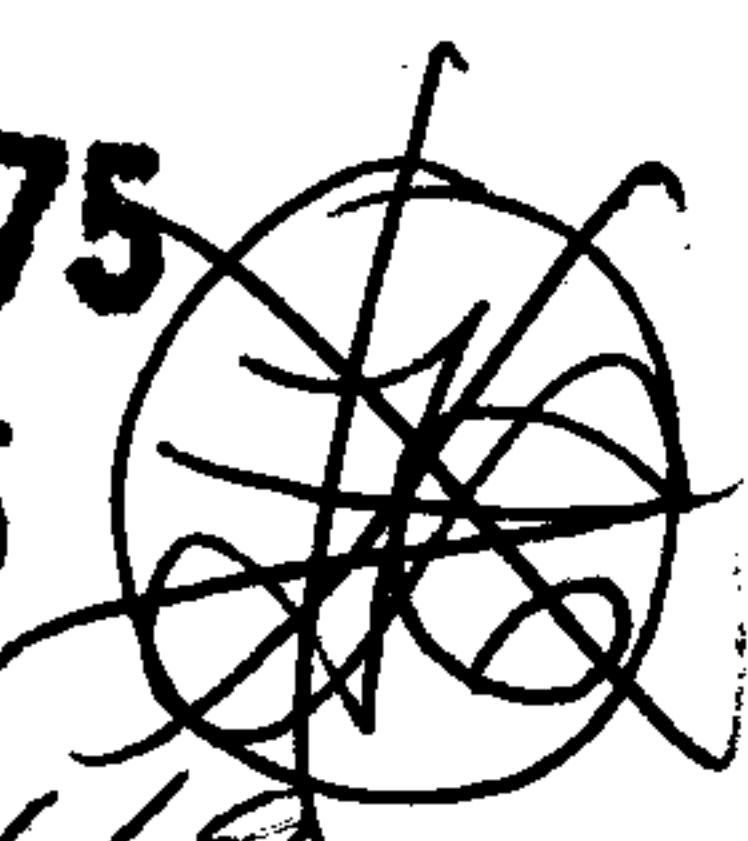


9149



DEC 1 1975
 OCT 14 1975



9149

PT. 07.00-007-130-084
 PT. ~~6.95A~~ 5.78A
 BLOCK "H"

APPROVED LORAIN CO. MAP DEPT.	
DATE	10-1-75
PAGE	7-00-005D 7-00-007D
BY	LWH
VOID AFTER	



10-1-75
 -LWH

Copyright 1964
 Revised 7-1-95

7-00-007-D

MILLS

CREEK

CREEK

MILLS

25

094

481

16120

771.84

145.97

107.16

102.1

99.77

230 -078
 314.82

229 -079
 339.65

228 -080
 372.85

227 -081
 429.34

481 -006
 175.61

482 -007
 170.46

483 -008
 172

PT. 07-00-006-101-098
 PT. 2.48A

877.28

943.99

62.01

17.18

84.06

363.01

76.45

50.56

61.24

33.18

877.28

943.99

877.28

985.7

800

