

9146

OCT 15 1975

APPROVED	
LORAIN CO.	
MAP DEPT.	
DATE	
PAGE	
BY	
VOID AFTER	

9146

[Signature]

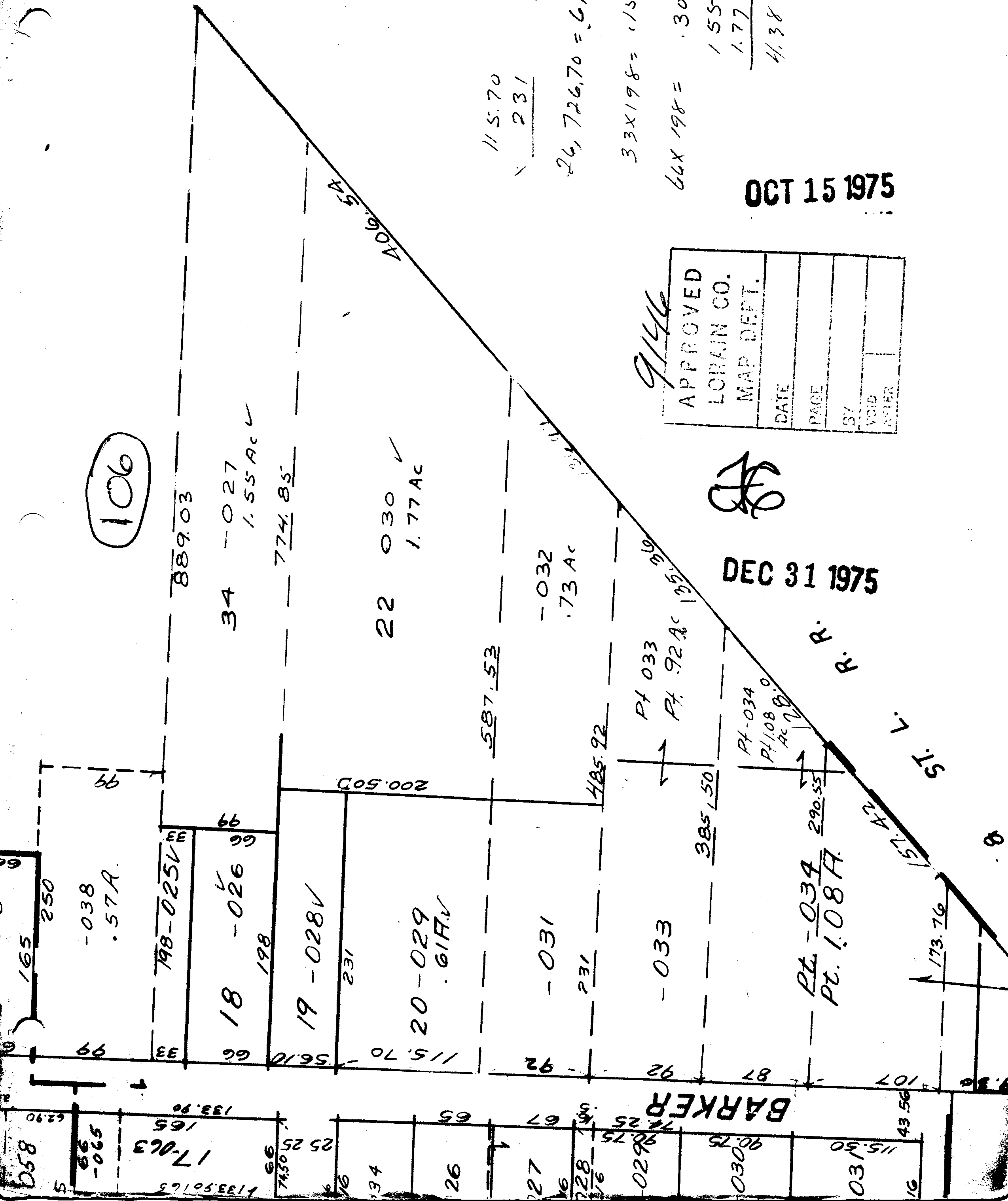
DEC 31 1975

R.

R.

L.

BARKER



106

889.03

34 - 0.27
1.55 AC ✓

774.85

406.54

22 0.30 ✓
1.77 AC

587.53

-0.32
.73 AC

Pt 033
Pt. 92 AC 195.90

Pt-034
Pt. 108 B.O.
Ac 7.0

Pt. -034 290.55
Pt. 1.08 A.

57.42
173.76

115.70
231

26,726.70 = 61 AC

33 x 198 = 15 AC

66 x 198 = 30

155

1.77

4.38

058

566
-065

17.063

133.50165

566
74.50

134

26

27

228

029

030

031

16

165
250

-0.38
.57 A.

198-025 ✓

18 - 0.26 ✓
198

19 - 0.28 ✓

198
231

20 - 0.29
.61 A. ✓

-0.31
231

-0.33

385.50

173.76

8