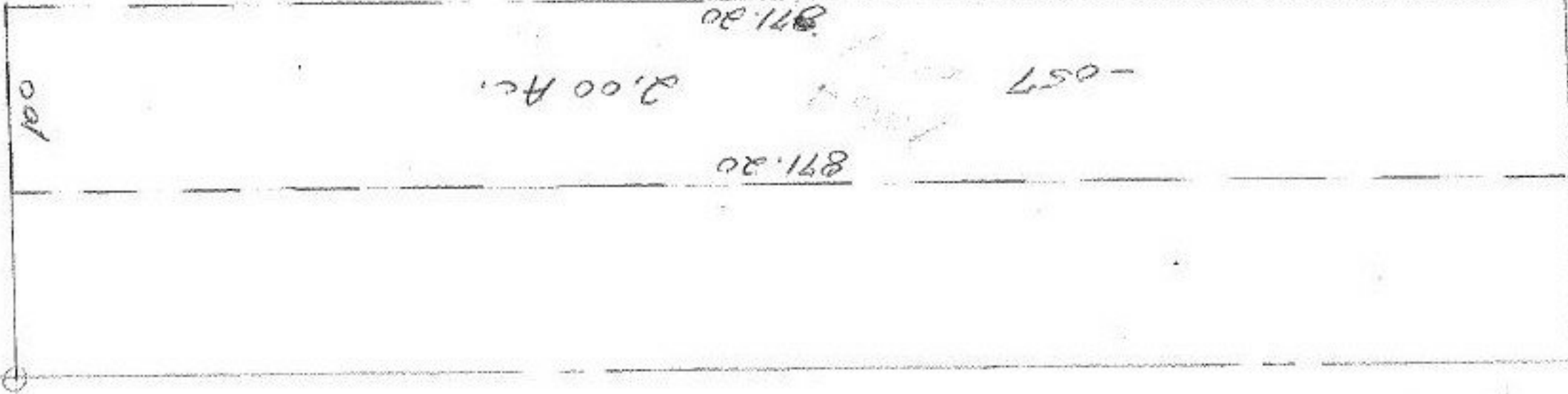


Pt. ~~-010~~ -054

Pt. ~~49-95A~~ 47-95A

-058

45.95 Ac.



DEC 31 1975

SEP 23 1975

9119

APPROVED	
LORAIN CO.	
MAP DEPT.	
DATE	9-10-75
PAGE	4-00016 E
BY	J. J. Caldwell
VOID	
AFTER	

77
28-5-88

100
POWDERMAKER

168.60 97.51

94.82

596.94