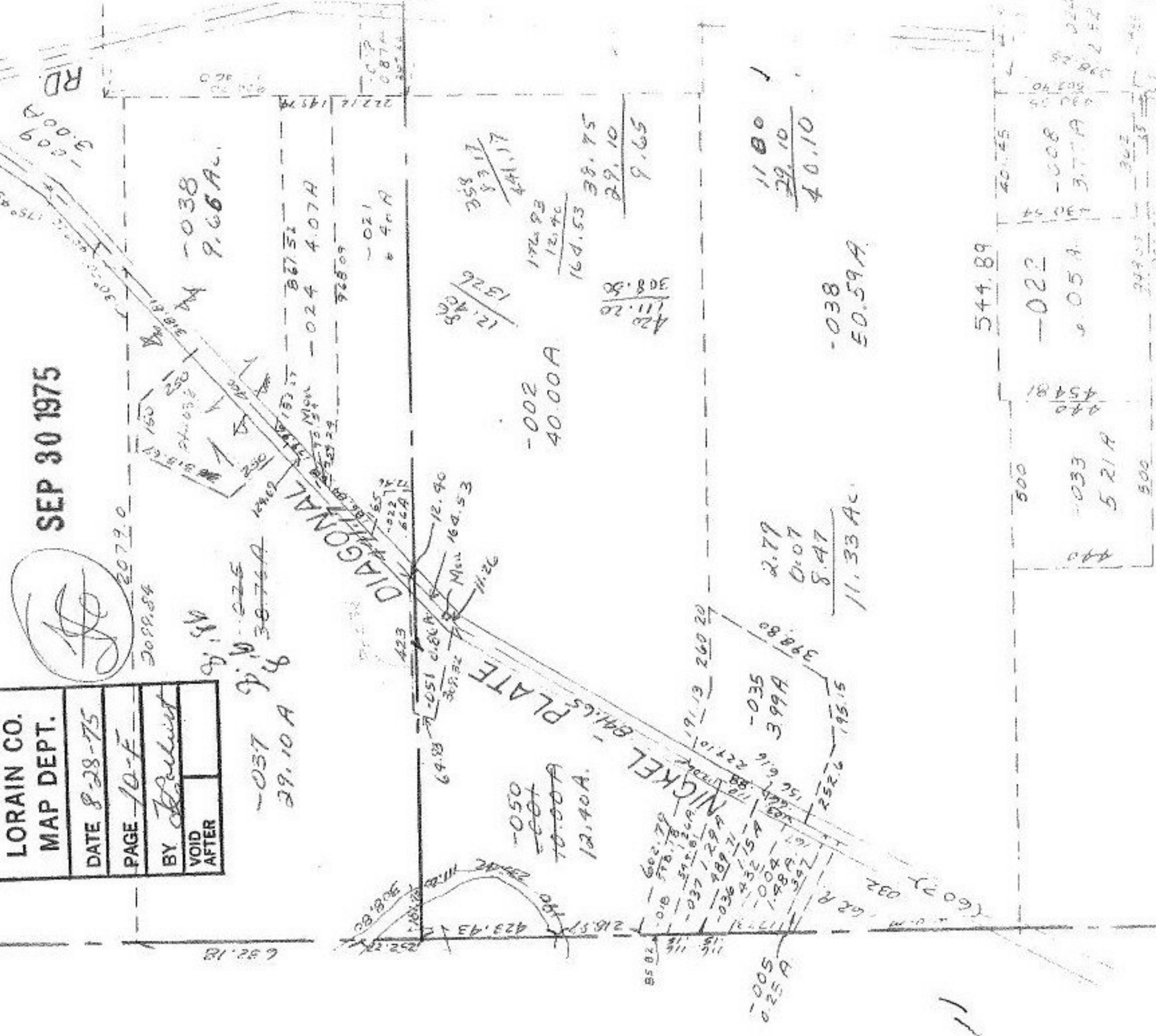


9082

APPROVED
LORAIN CO.
MAP DEPT.
DATE 8-28-75
PAGE 10-F
BY <i>J. H. ...</i>
VOID AFTER

AUG 28 1975

SEP 30 1975



J. H. ...

J. H. ...

037 29.10 A
038 9.66 A

DIAGONAL
NICKEL PLATE

050 12.40 A
001 12.40 A
002 40.00 A

005 0.25 A

035 3.99 A

033 5.21 A

038 9.66 A

003 5.05 A

008 3.77 A

009 3.00 A

010 5.44 A

011 5.21 A

012 5.00 A

013 5.00 A

014 5.00 A

015 5.00 A

016 5.00 A

017 5.00 A

018 5.00 A

019 5.00 A

020 5.00 A

021 5.00 A

022 5.00 A

023 5.00 A

024 5.00 A

025 5.00 A

026 5.00 A

027 5.00 A

028 5.00 A

029 5.00 A

030 5.00 A