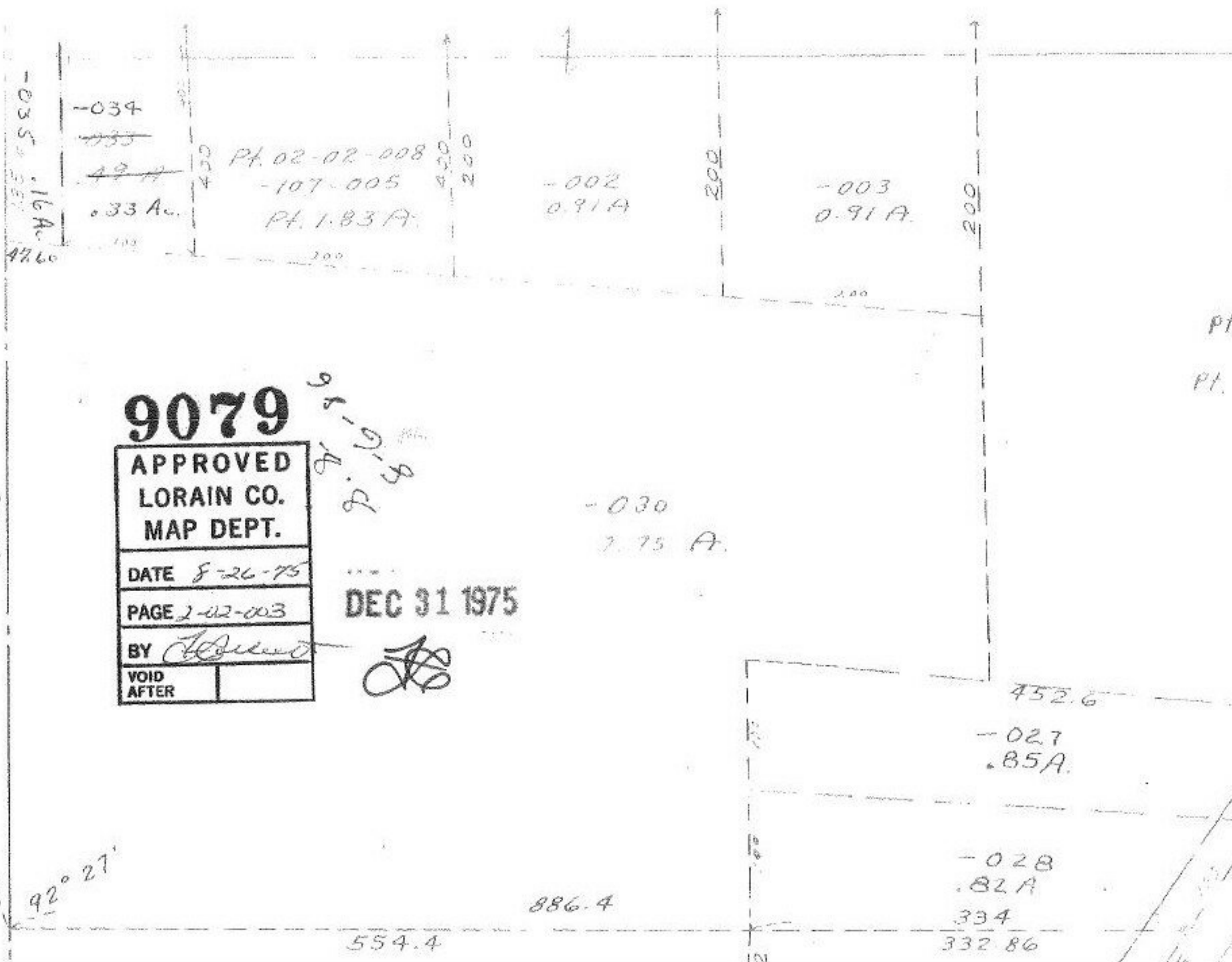


AUG 26 1975



631.3  
4760  
-035  
16A

-034  
~~035~~  
42 A  
0.33 A.

Pt. 02-02-008  
-107-005  
Pt. 1.83 A.

-002  
0.91 A

-003  
0.91 A

9079

APPROVED  
LORAIN CO.  
MAP DEPT.

DATE 8-26-75

PAGE 2-02-003

BY *[Signature]*

VOID  
AFTER

DEC 31 1975

*[Signature]*

-030  
7.75 A.

-027  
0.85 A.

-028  
0.82 A

334  
332.86

92° 27'

554.4

886.4

452.6

pt.  
pt.