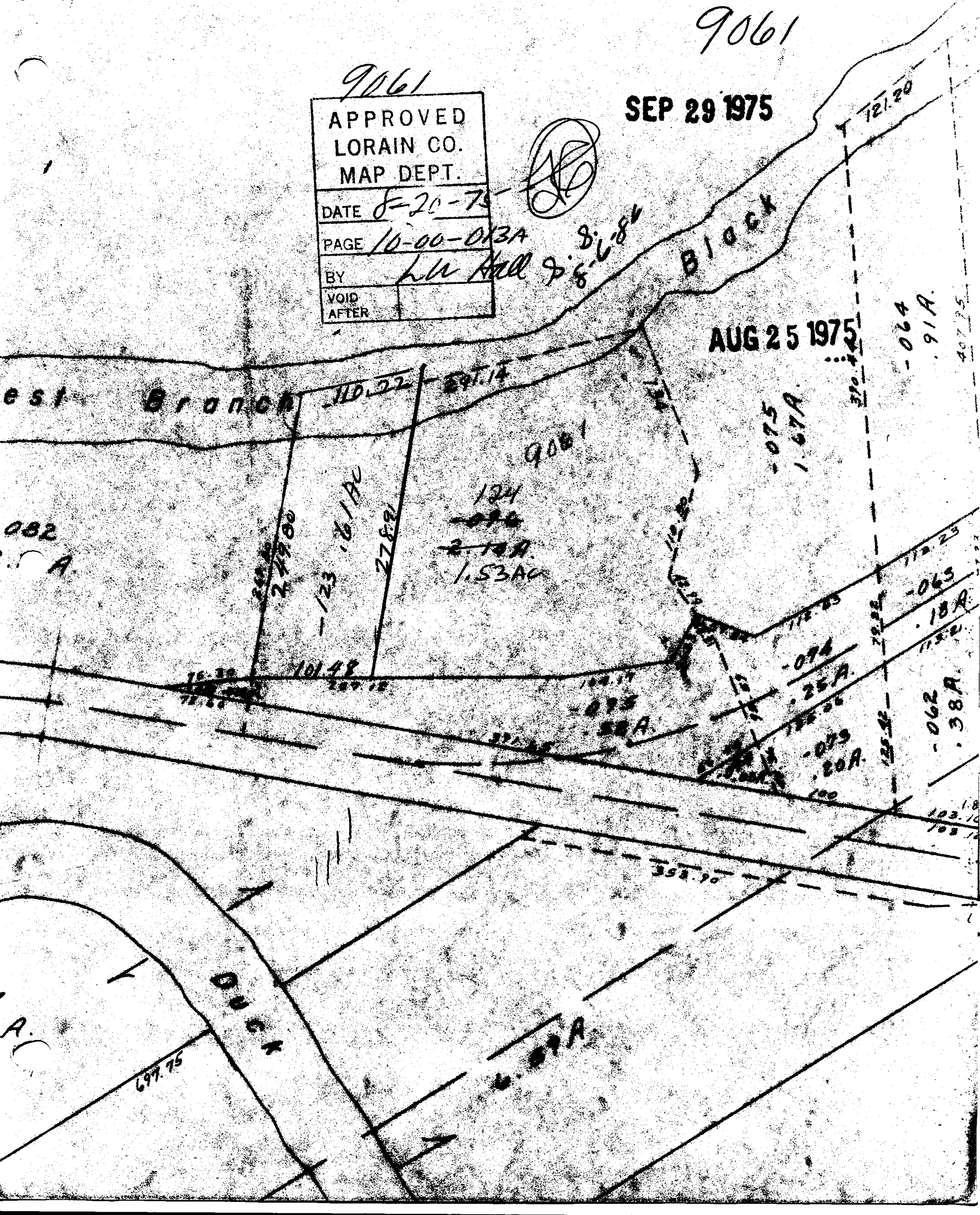


9061

9061

SEP 29 1975

APPROVED LORAIN CO. MAP DEPT.	
DATE	8-20-75
PAGE	10-00-013A
BY	LW Hall 8' 8" 8' 8"
VOID AFTER	



AUG 25 1975

West Branch

Block

Duck

110.22 291.14

279.00  
123 161 AC  
278.91

124  
-076  
2-10A  
1.53AC

-075  
1.67A

172.23  
-074  
25A  
175.06  
-079  
20A  
180

-064  
91A  
407.75  
-063  
18A  
-062  
38A

697.75

6.89A

352.90

103.10  
103.10