

2339.95

-032
Robert C.

9004

13
94°15'

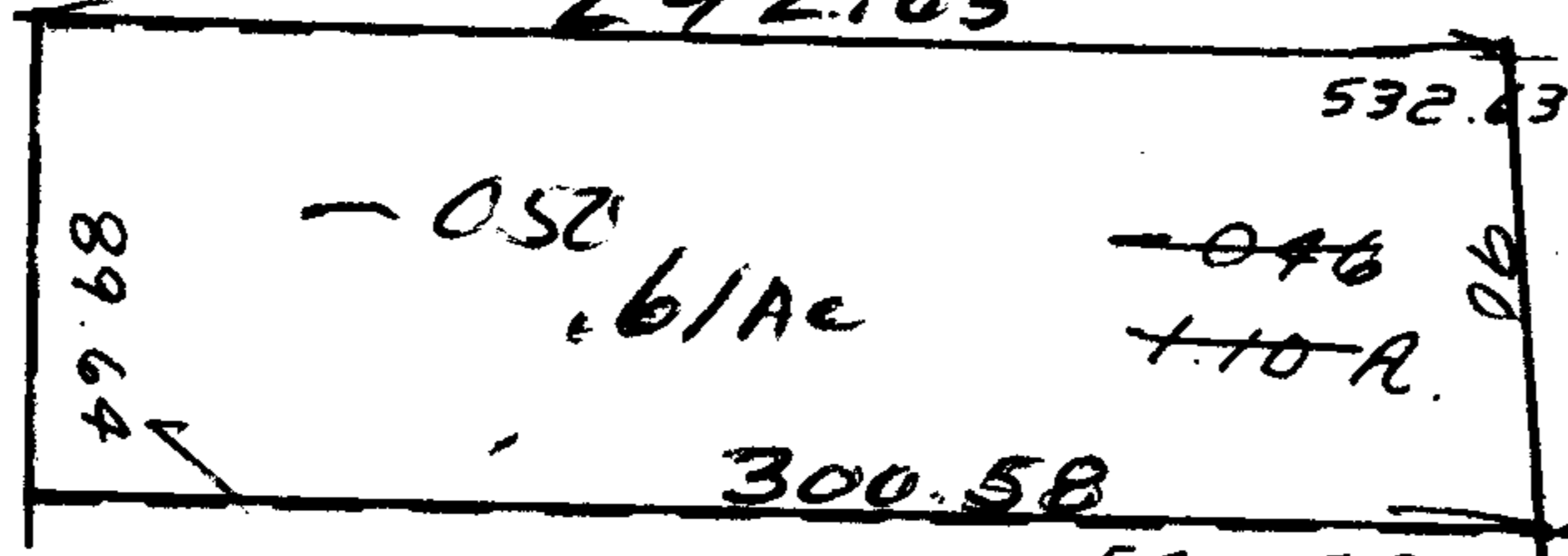
R1A

Pt. 18.72 A.

AUG 7 1975

Pt. 05-00-049-000-022

292.63



-037
1.32 A.

04.25

106.85

549.26

518

200

-033
46 A.

9004

034
2.44 A.

DEC 31 1975

APPROVED	
LORAIN CO.	
MAP DEPT.	
DATE	8-7-75
PAGE	500-0488
BY	LW Hall
VOID AFTER	

726

430

-035
1.42 A.

Pt. 05-00-049-000-011

pt. 22.25 A.

144.41

430

-036
1.94 A.

RD. 66

300

300

33.16