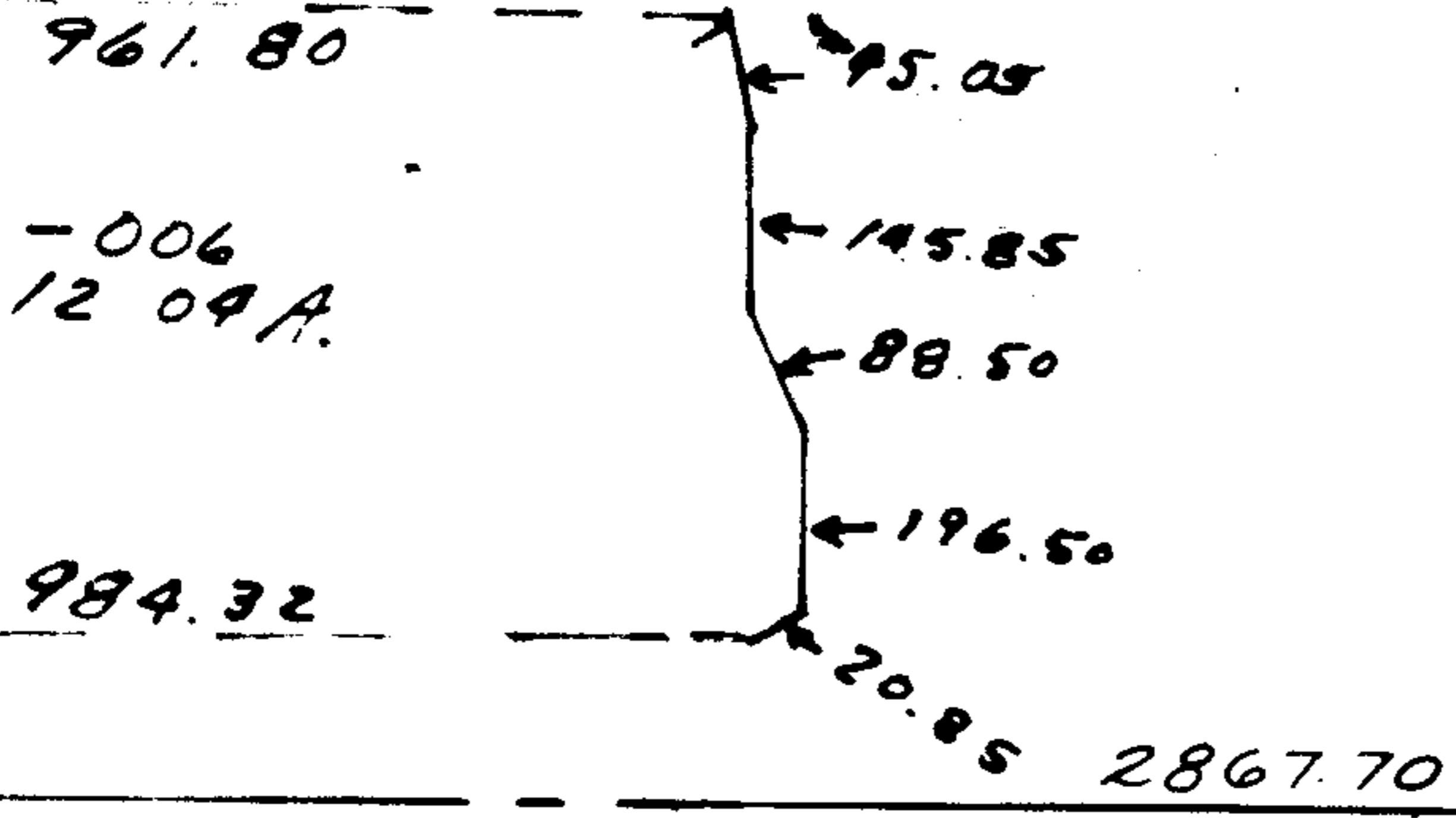


981.88

89012

91017



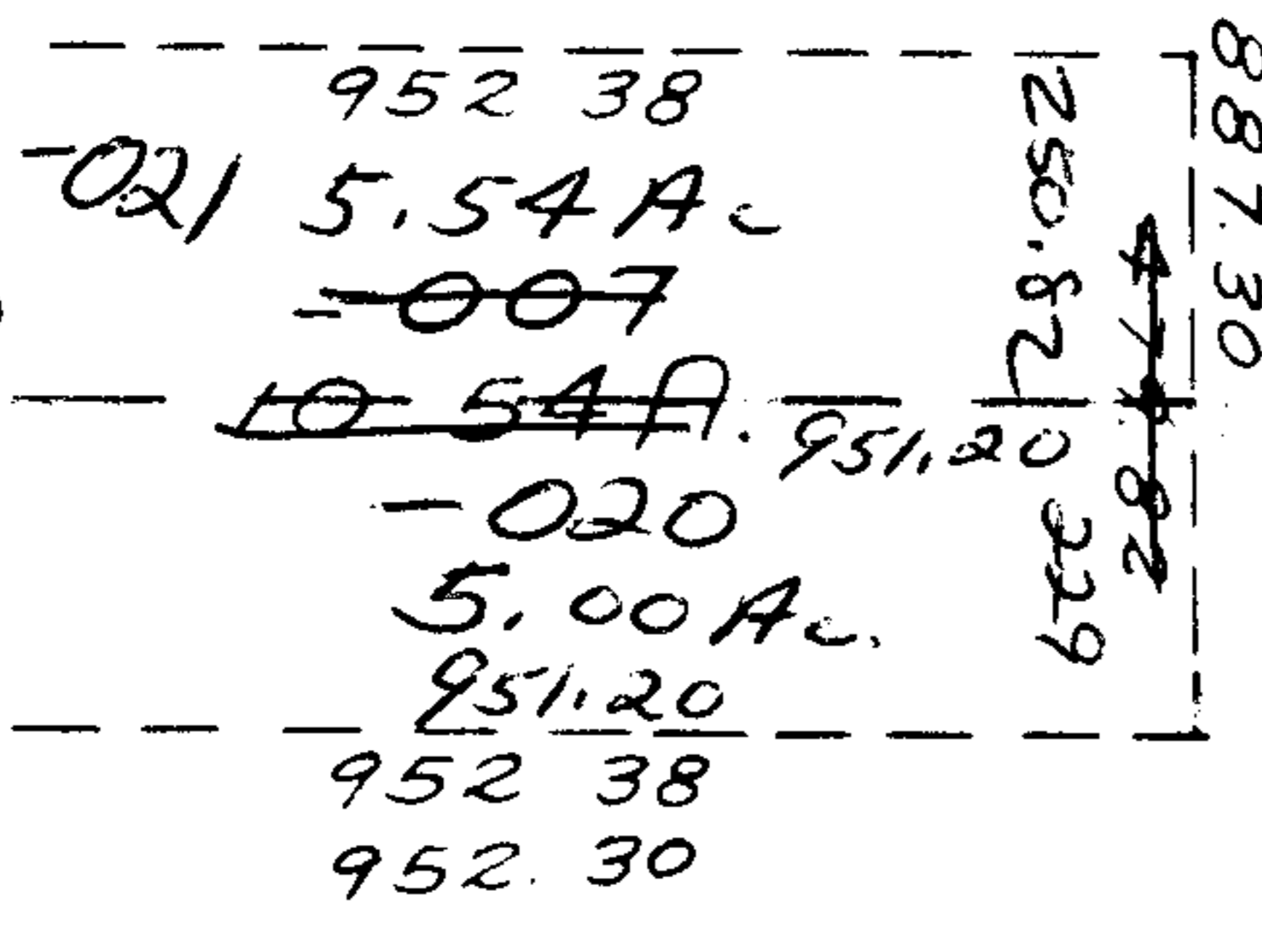
APPROVED.
LORAIN CO.
MAP DEPT.
<b>8972</b>
DATE 1-24-75
PAGE 12-H
BY <i>[Signature]</i>
VOID AFTER

- 001  
63.41A.

SEP 22 1975

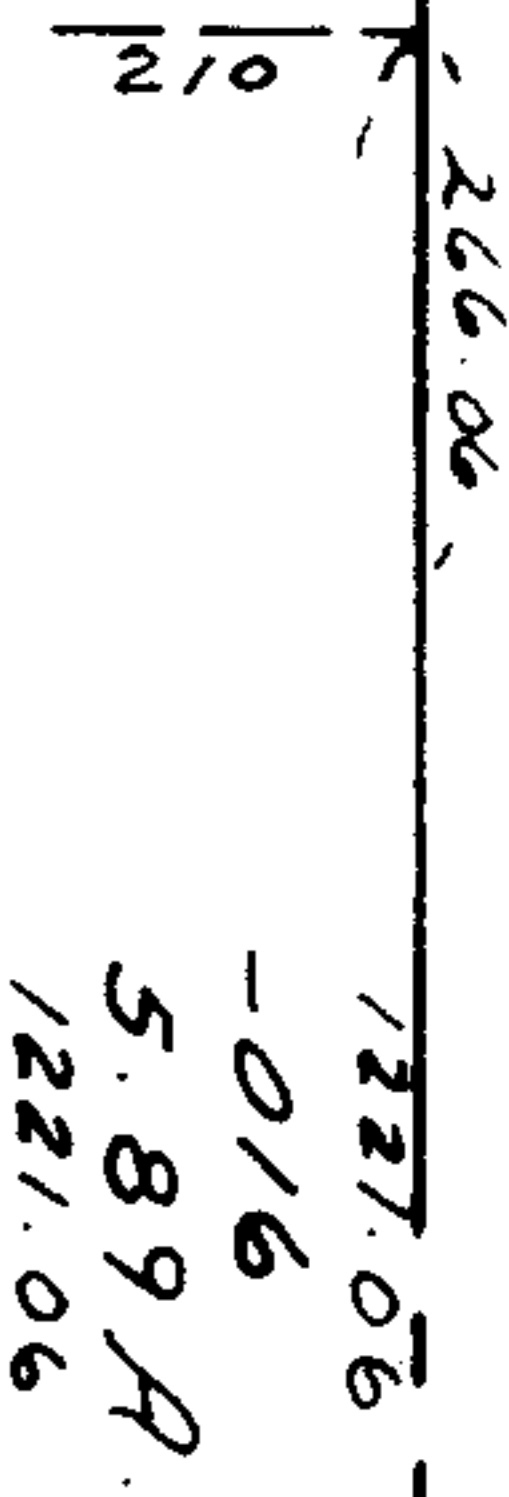
8

- 006  
8.84A.



- 005  
43.12A.

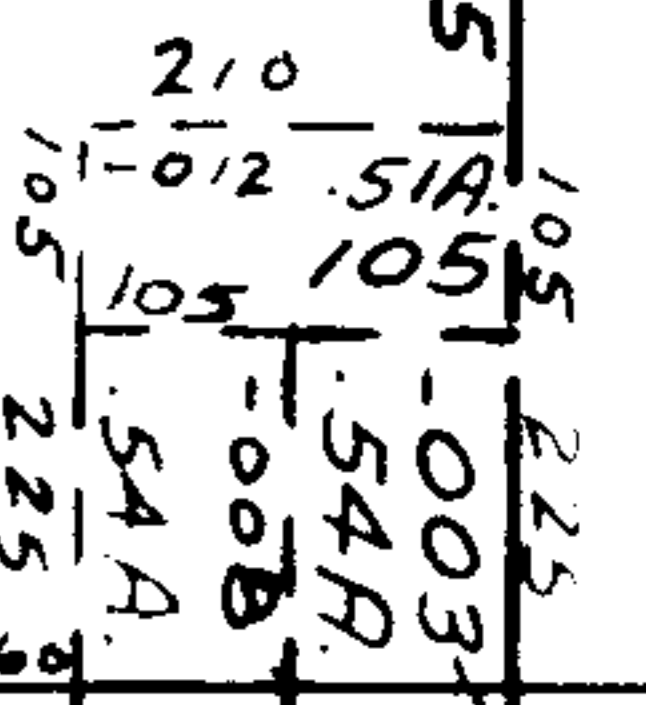
~~479.82~~  
~~229~~  
~~250.82~~



- 017  
28.87A

- 004  
15.00A.

1776.04



384.78

1879.4

407.48  
250.82  
474.82  
894.85 RD.

JUL 28 1975