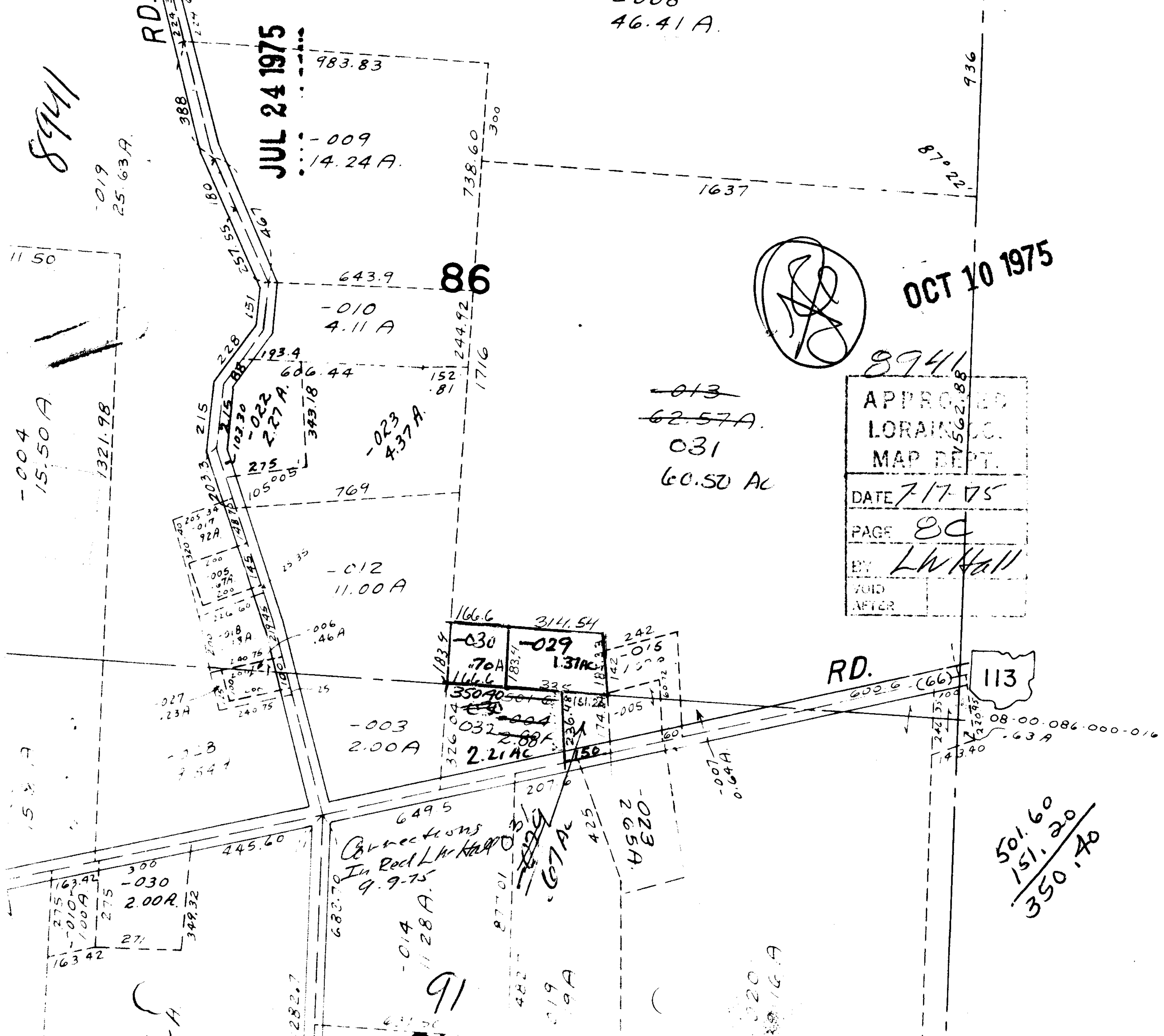


46.41A.

8941

JUL 24 1975

OCT 10 1975



| | |
|-----------|---------|
| 8941 | |
| APPROVED | 562.88 |
| LORAIN | |
| MAP DEPT. | |
| DATE | 7-17-75 |
| PAGE | 80 |
| BY | LW Hall |
| VOID | |
| AFTER | |

~~013~~
~~62.57A.~~
 031
 60.50 AC

501.60
 151.20
 350.40

Corrections
 In Recd Ltr 10/9/75
 9.9.75

116.6 314.54
 -030 70A 1.31AC
 -029 1.31AC
 350.40
 326.04
 032 2.88A
 2.21AC
 150

-004
 15.50A
 1321.98

-019
 25.63A

-012
 11.00A

-010
 4.11A

-023
 4.37A

-003
 2.00A

-014
 11.28A

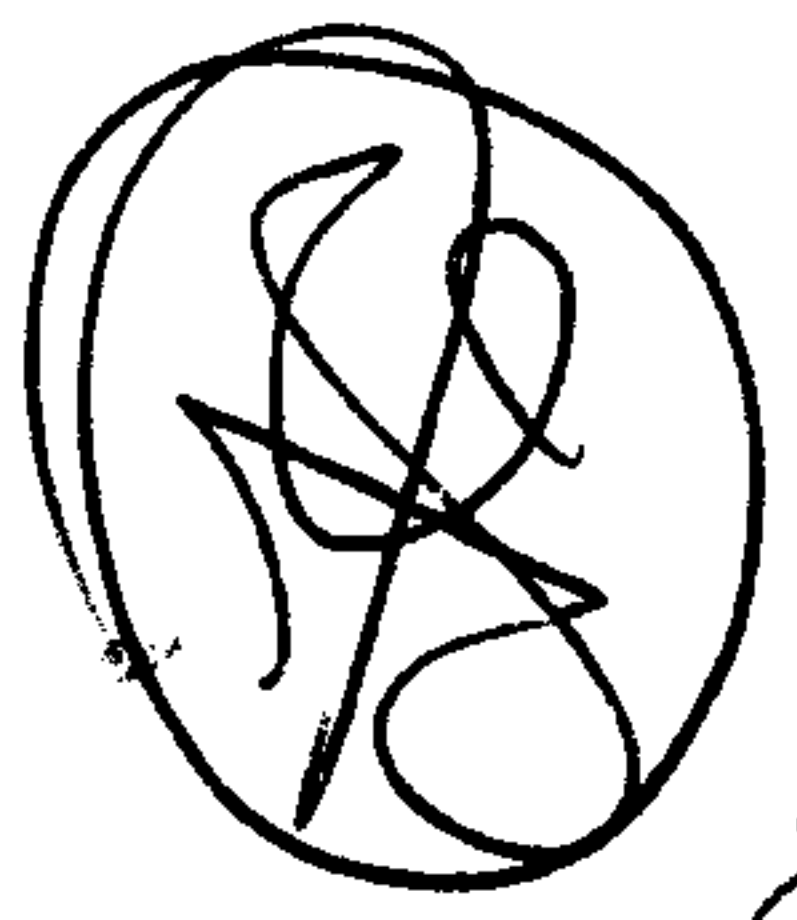
-023A
 2.65A

019
 19A

020
 16A

RD. 113

86



936

87°22'

1637

738.60
 300

983.83

-009
 14.24A

643.9

193.4
 606.44
 152.81
 1716

606.44

769

25.35

006
 .46A

25

240.75

649.5

682.70

282.7

282.7

738.60

300

643.9

244.92

1716

769

25.35

006
 .46A

25

240.75

649.5

682.70

282.7

282.7

282.7

282.7

282.7