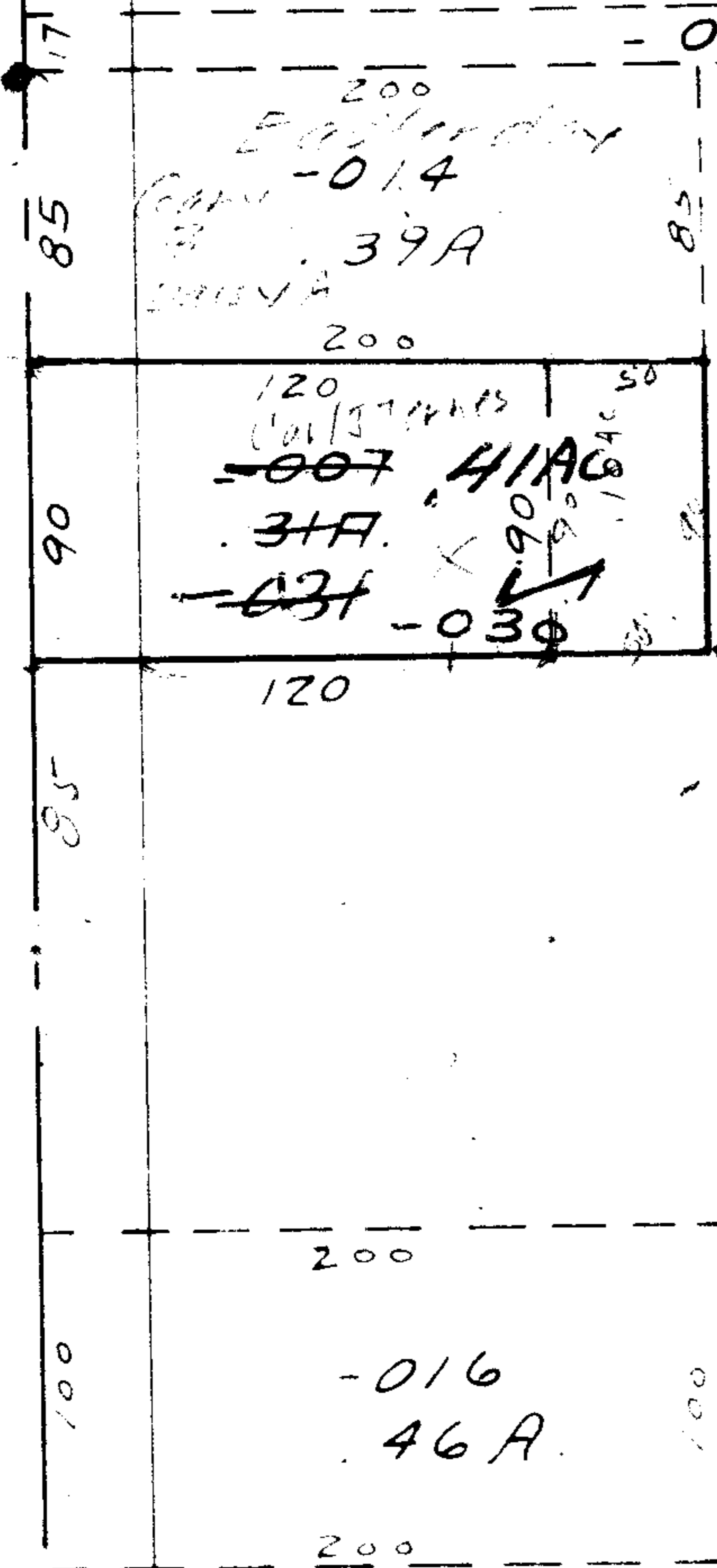


SEE 6

365-5228

8932



8932

APPROVED
LORAIN CO.
MAP DEPT.
DATE 8-7-75
PAGE 6-143
BY L. W. Hall
VOID
ALTER 031

AUG 11 1975

~~017~~
~~11.88 A.~~
11.78 AC

DEC 1 1975

$$\begin{array}{r}
 11.88 \\
 \underline{.31} \\
 12.19 \\
 \underline{.41} \\
 12.78
 \end{array}$$

Corrected
Tax Map
Sketch

Change P.P. No

031
To
030

#8932