

8895
8896

SEE 6-78

JUL 1 1975

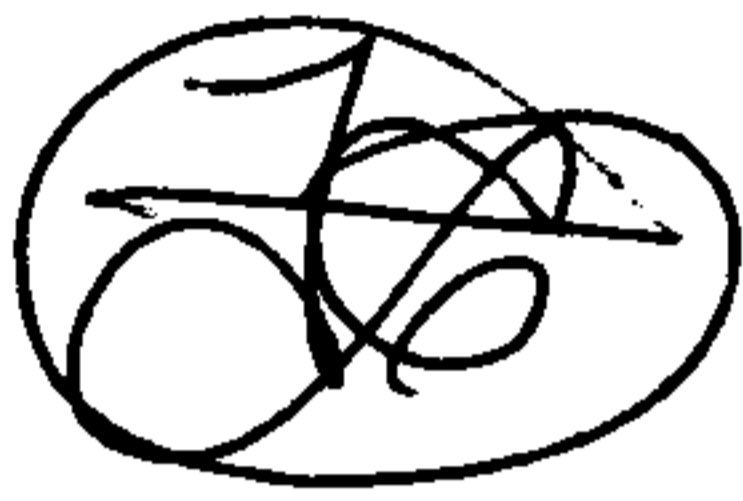
8895
8896

APPROVED
LORAIN CO.
MAP DEPT.
DATE 6-30-75
PAGE 6-96
BY <i>J. Colburn</i>
VOID AFTER

DEC 1 1975

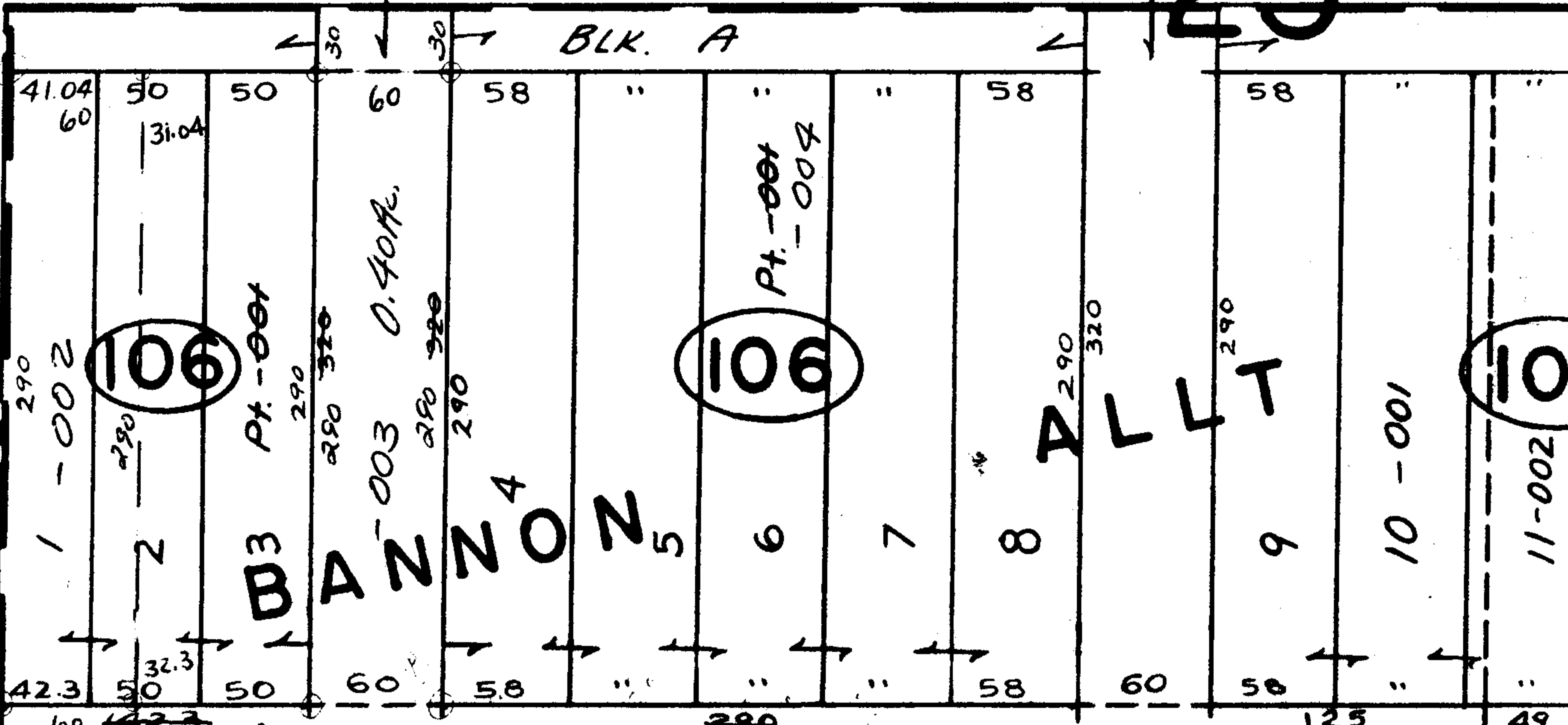
105

-025
Pt. -022
Pt. 30.98A.
30.58Ac.



25

2115.96



LOWELL

113

